

SIMPLY BETTER.

Clever solutions for cutting work.

Tin Snips and Shears to Cut Sheet Metal with Precision

(April 2024)

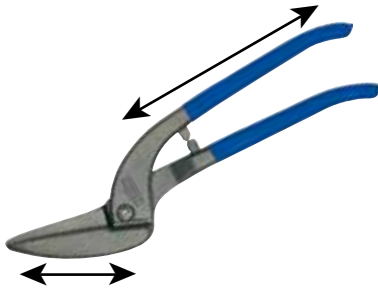
BESSEY



Lexicon

1. Types

Standard tin snips



In standard tin snips, edges and handle are traditionally forged into one unit. The force required for cutting is determined by the ratio of edge length to the handle length.

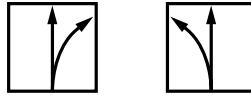
Compound leverage snips



Compound leverage snips comprise a cutter head and a handle. The compound action produces additional leverage.

2. Models

Shape and straight cutting snips



Shape and straight cutting snips are real „all-rounders“. They can cut through a metal sheet (straight-cut) as well as cut large and small contours or radii (outlinecut). In this case, it does not matter whether you are cutting at the edge (edge cut) or at the centre of a sheet. You can naturally use shape and straight cutting snips for notching-operations.

Shape cutting snips



Shape cutting snips are best suited when you want fine and narrow radius cuts near the edges of a metal sheet. You can use the delicately shaped edge of these snips to cut extremely narrow shapes or curves without any problem.

Straight cutting snips



Do you wish to cut a metal sheet at the centre and/or near the edges? Then the perfect tool for you is the straight cutting snips. You can use long edges of this tool to cross-cut and notch large metal sheets quickly and precisely with less effort.

3. Right cutting or left cutting snips. What is the difference?



Left cutting snips

Right cutting snips

Right cutting snips are sharpened and designed so that they can cut right radii (i. e. a curve from **left to right**) easily. Left cutting snips are the best for radius cuts **from right to left**.

The common perception is that, right cutting snips are for right-handers, and left cutting snips for left-handers. This is not true. In fact, it is the other way round. If you, a right-hander, are cutting a radius (see above, **from left to right**), using right cutting snips, you have to cut outwards from your wrist. With left cutting snips, (radius is then **from right to left**) you can cut inwards from your wrist. This is considerably more ergonomic. Try it out once!

Lexicon

4. Grades

The service life of edges depends directly on the grades of steel used and processing. High-performance snips with case-hardened HSS-edges particularly fulfill the most stringent requirements regarding the service life and consistent cutting performance. Cutter heads of the HSS-TiN grade are additionally coated with extremely hard titanium nitride that reduces wear and tear. Other cutting materials, namely special high quality steel, high quality steel and standard quality steel, are available depending on the application and the frequency of use.

Quality of steel	min. hardness Rockwell C	Durability
HSS-TiN	65	+++++
HSS	65	++++
Special high quality	61	+++
High quality steel	59	++
Standard quality steel	56	+

- Continuous, straight and curved cuts, right
- Continuous, straight and curved cuts, left
- Short, straight and narrow curved cuts, right
- Short, straight and narrow curved cuts, left
- Straight and curved cuts with a large radius in both left and right directions
- Continuous, straight cuts
- Short, straight cuts, notch
- Circular cuts

The high quality of the steel at the cutting edge leads to a much longer service life of the snips.

Quality of steel	For maximum sheet thickness at the tensile strength of:			
	400 N/mm ²	600 N/mm ²	800 N/mm ²	1100 N/mm ²
Normal metal snips				
HSS D407..; D416..; D418..;	1.2 mm	1.0 mm	0.8 mm	0.6 mm
High quality steel D202..; D206..; D207..; D208..; D214..; D216..; D218..;	1.2 mm	1.0 mm	0.8 mm	--
Standard quality steel D102..; D106..; D107..; D114..; D116..; D118..; D146..; D159..; D70..-D77..; D122N; D122A	1.2 mm	1.0 mm	0.8 mm	--

L = Left cut design
(refer to page 2 as well)

SB = On carded hang pack

Standard tin snips with a rocker spring, available on request for an extra charge.

Quality of steel	For maximum sheet thickness at the tensile strength of:			
	400 N/mm ²	600 N/mm ²	800 N/mm ²	1100 N/mm ²
Hand snips with leverage				
HSS-TiN D27AH-TiN*	1.5 mm	1.2 mm	1.0 mm	0.8 mm
HSS D27AH*	1.5 mm	1.2 mm	1.0 mm	0.8 mm
Special high quality steel D17ASS D29SS*; D29ASS*; D29BSS*; D39ASS* D15A	2.0 mm 1.5 mm 1.2 mm	1.5 mm 1.2 mm 1.0 mm	1.2 mm 1.0 mm 0.8 mm	--
High quality steel D08..; D16..; D17A; D22A D27*; D27A*; D27B*	1.5 mm	1.2 mm	1.0 mm	--

* Snips can be stressed for up to 3 x 0.6 mm (1.8 mm) for a short period of time for cutting the seams.

Caution! Manual sheet metal snips may only be used to cut thin sheets of soft metals and steel. They are not suitable for cutting through round or rectangular section metal shapes such as wires for example.



Low-fatigue continuous cutting



Frictionless robust

The shape and straight cutting snips D39ASS are particularly smooth running and extremely wear-resistant:

- due to sintered steel insert in the joint area
- due to permanent threaded connection of the joint area with stable stud bolt
- due to stainless steel panel over the joint for protecting the spring beneath



Perfect cornering

They enable high-precision cutting of curves in the tightest of radii and, with less risk of scratching the surface:

- due to extremely compact cutter head with partially sunken threaded head connection



Effort-saving

It is possible to use the complete cutting length with every cut:

- due to a significantly reduced handle opening angle



Easy to use

Right and left-handed users can lock and unlock the snips with ease, without a change in grip:

- due to central positioning of the latch on the top handle

Shape and straight cutting snips D39ASS



Order number	Overall length		Blade length		↓ max. ↑	⚙️	Weight	PU	V4
	mm	"	mm	"					
D39ASS	230	9	30	1 3/16	1.2	+++	0.49	5	
D39ASSL	230	9	30	1 3/16	1.2	+++	0.49	5	
D39ASS-SB	230	9	30	1 3/16	1.2	+++	0.50	5	
D39ASSL-SB	230	9	30	1 3/16	1.2	+++	0.50	5	



- For continuous, straight and curved cuts
- Extremely compact cutter head with a partially countersunk head screw connection for increased manoeuvrability and precision for curved cuts
- Joint area screwed connection with stud bolt, sintered disc and maintenance-free spring for extreme robustness
- Reduced handle opening angle for optimised handling and an even cutting length
- Central latch for easy operation without having to change your grip
- Available in right or left cutting versions

↓
max.
↑ Sheet thickness
(600 N/mm²)

⚙️ Product life expectancy

Cutting with less effort



Shape and straight cutting snips D29ASS-2



Order number	Overall length		Blade length		↓ max. ↑	⚙️	Weight		PU		
	mm	"	mm	"			kg	qty.	V4		
D29ASS-2	260	10 ¼	33	1 5/16	1.2	+++	0.51	5			
D29ASSL-2	260	10 ¼	33	1 5/16	1.2	+++	0.51	5			
D29ASS-2-SB	260	10 ¼	33	1 5/16	1.2	+++	0.51	5			
D29ASSL-2-SB	260	10 ¼	33	1 5/16	1.2	+++	0.51	5			
Order number	Layout						Weight		PU		
DSET29-15	1 x D29ASS-2, 1 x D29ASSL-2 and 1 x D15A in snips pouch						kg	qty.	V4		
							1.29	1			

- ERGO-handle for increased comfort – reduced hand fatigue!
- For continuous, straight and curved cuts
- Compact cutter head: High manoeuvrability for shape cutting
- Optimised leverage ratio: 25 % less effort
- Optimised edge shape: No slipping even without serrations
- Available in right or left cutting versions

Shape cutting snips D29SS-2



Order number	Overall length		Blade length		↓ max. ↑	⚙️	Weight		PU	
	mm	"	mm	"			kg	qty.	V4	
D29SS-2	260	10 ¼	40	1 9/16	1.2	+++	0.49	5		
D29SSL-2	260	10 ¼	40	1 9/16	1.2	+++	0.49	5		

- ERGO-handle for increased comfort – reduced hand fatigue!
- For short, straight and curved cuts
- Edges with micro-serrations for slip-proof working
- Available in right or left cutting versions

Straight cutting snips D29BSS-2



Order number	Overall length		Blade length		↓ max. ↑	⚙️	Weight		PU	
	mm	"	mm	"			kg	qty.	V4	
D29BSS-2	260	10 ¼	38	1 5/16	1.2	+++	0.52	5		
D29BSSL-2	260	10 ¼	38	1 5/16	1.2	+++	0.52	5		

- ERGO-handle for increased comfort – reduced hand fatigue!
- For continuous, straight cuts
- Edges with micro-serrations for slip-proof working
- Available in right or left cutting versions

↓
max.
↑ Sheet thickness (600 N/mm²)

⚙️ Product life expectancy

Cutting with less effort



Shape and straight cutting snips D27A



Order number	Overall length		Blade length		↓ max. ↑	⚙️	Weight		PU	V4
	mm	"	mm	"			kg	qty.		
D27A	260	10 ¼	33	1 5/16	1.2	++	0.56	5		
D27AL	260	10 ¼	33	1 5/16	1.2	++	0.56	5		
D27A-SB	260	10 ¼	33	1 5/16	1.2	++	0.57	5		
D27AL-SB	260	10 ¼	33	1 5/16	1.2	++	0.57	5		

- For continuous, straight and curved cuts
- Edges with micro-serrations for slip-proof working
- Available in right or left cutting versions

Shape cutting snips D27



Order number	Overall length		Blade length		↓ max. ↑	⚙️	Weight		PU	V4
	mm	"	mm	"			kg	qty.		
D27	260	10 ¼	40	1 9/16	1.2	+++	0.49	5		
D27L	260	10 ¼	40	1 9/16	1.2	+++	0.49	5		

- For short, straight and curved cuts
- Edges with micro-serrations for slip-proof working
- Available in right or left cutting versions

Straight cutting snips D27B



Order number	Overall length		Blade length		↓ max. ↑	⚙️	Weight		PU	V4
	mm	"	mm	"			kg	qty.		
D27B	260	10 ¼	32	1 5/16	1.2	++	0.56	5		
D27BL	260	10 ¼	32	1 5/16	1.2	++	0.56	5		

- For continuous, straight cuts
- Edges with micro-serrations for slip-proof working
- Available in right or left cutting versions

↓
max.
↑ Sheet thickness
(600 N/mm²)

⚙️ Product life expectancy



Shape and straight cutting snips, robust D17ASS



Order number	Overall length		Blade length		↓ max. ↑	⊗	Weight		PU	V4
	mm	"	mm	"			kg	qty.		
D17ASS	240	9 ½	24	1	1.5	+++	0.55	5		
D17ASSL	240	9 ½	24	1	1.5	+++	0.55	5		
D17A	240	9 ½	24	1	1.2	++	0.55	5		
D217AL	240	9 ½	24	1	1.2	++	0.55	5		

- For continuous, straight and curved cuts
- Edges with micro-serrations for slip-proof working
- Exceptionally robust: Drop-forged handles
- Painted handles
- Available in right or left cutting versions

Shape and straight cutting snips, manoeuvrable D08



Order number	Overall length		Blade length		↓ max. ↑	⊗	Weight		PU	V4
	mm	"	mm	"			kg	qty.		
D08	230	9	27	1 1/16	1.2	++	0.38	5		
D08L	230	9	27	1 1/16	1.2	++	0.38	5		
D08-SB	230	9	27	1 1/16	1.2	++	0.39	5		
D08L-SB	230	9	27	1 1/16	1.2	++	0.39	5		

- Special flat cutter head enables cutting in narrowest radius
- For continuous, straight and curved cuts
- Edges with micro-serrations for slip-proof working
- Available in right or left cutting versions

Shape and straight cutting snips MULTISNIP Longstyle D22A



Order number	Overall length		Blade length		↓ max. ↑	⊗	Weight		PU	V4
	mm	"	mm	"			kg	qty.		
D22A	280	11	64	2 ½	1.2	++	0.43	5		
D22A-SB	280	11	64	2 ½	1.2	++	0.45	5		

- For long continuous straight and large radius cuts
- Extra long cutting blades, laterally displaced for continuous cuts
- Available only in left cutting version

↓
max.
↑ Sheet thickness (600 N/mm²)
⊗ Product life expectancy

The universal No.16 range



Aviation snips D16



Order number	Overall length		Blade length		↓ max. ↑	⚙️	Weight		PU
	mm	"	mm	"			kg	qty.	
D16	240	9 ½	40	1 ⅞	1.2	++	0.38	10	V4
D16-SB	240	9 ½	40	1 ⅞	1.2	++	0.39	10	

- For short, straight and curved cuts
- Edges with micro-serrations for slip-proof working
- Left cut model available as well

Aviation snips D16L



Order number	Overall length		Blade length		↓ max. ↑	⚙️	Weight		PU
	mm	"	mm	"			kg	qty.	
D16L	240	9 ½	40	1 ⅞	1.2	++	0.38	10	
D16L-SB	240	9 ½	40	1 ⅞	1.2	++	0.39	10	

- For short, straight and curved cuts
- Edges with micro-serrations for slip-proof working
- Right cut model available as well

Aviation snips D16S



Order number	Overall length		Blade length		↓ max. ↑	⚙️	Weight		PU
	mm	"	mm	"			kg	qty.	
D16S	240	9 ½	44	1 ¾	1.2	++	0.38	10	
D16S-SB	240	9 ½	44	1 ¾	1.2	++	0.39	10	
Order number	Layout						Weight	PU	
DSET16	1 x D16, 1 x D16L and 1 x D16S in snips pouch						1.23	1	

- No offset to blades, for short, straight and curved cuts with a large radius in both left and right directions
- Edges with micro-serrations for slip-proof working
- Available only in left cutting version



↓
max.
↑ Sheet thickness
(600 N/mm²)

⚙️ Product life expectancy

Your versatile partner



Your benefits at a glance:

- 1 Extremely compact cutting head**
The design of the uniquely compact design head offers one tremendous manoeuvrability, the ability to cut the narrowest radii and the ability to reach some of the most difficult to access spots.
- 2 Practicable combination of bar and arrester**
A practical locking mechanism allows one to open and close with one hand and limits the maximum opening of the snip.
- 3 Compound leverage**
Compound leverage considerably reduces the effort required. Improving productivity while reducing hand fatigue for the worker.
- 4 Ergonomic handle**
The plastic grips on the ergonomically designed handles have soft cushion inserts that further reduce hand fatigue for the worker. The soft cushion inserts also keep the hand from slipping on the grips.

Shape and straight cutting snips, small and manoeuvrable D15A



Order number	Overall length		Blade length		↓ max. ↓	⚙️	Weight	PU		V4
	mm	"	mm	"				kg	qty.	
D15A	180	7	20	3/8	1.0	+++	0.18	10		
D15AL	180	7	20	3/8	1.0	+++	0.18	10		
D15A-SB	180	7	20	3/8	1.0	+++	0.18	10		
D15AL-SB	180	7	20	3/8	1.0	+++	0.18	10		
Order number	Layout						Weight	PU		
DSET15	1 x D15A, 1 x D15S and 1 x D15AL in snips pouch						0.61	kg	qty.	

- For long continuous, straight and curved cuts
- The extremely small forged heads have optimized blade geometry is very manoeuvrable; perfect for cutting small radii and in confined spaces
- The compact design results in the highest performance with the minimum of effort
- ERGO-handle for increased comfort reduced hand fatigue!
- Available in right or left cutting versions



↓
max.
↓ Sheet thickness
(600 N/mm²)

⚙️ Product life expectancy

Longer lasting and great performance



Your benefits at a glance:

- 1 Longer service life**
Tempered drop-forged cutting heads have hardened HSS inserts for a much longer service life and performance than conventional snips. Even when cutting the harder metals like stainless steel.
- 2 Compound leverage**
Compound leverage considerably reduces the effort required. Improving productivity while reducing hand fatigue for the worker.
- 3 Ergonomic handle**
The plastic grips on the ergonomically designed handles have soft cushion inserts that further reduce hand fatigue for the worker. The soft cushion inserts also keep the hand from slipping on the grips.

HSS-TiN shape and straight cutting snips D27AH-TiN



Order number	Overall length		Blade length		↓ max. ↑	⚙️	Weight	PU		V6
	mm	"	mm	"				kg	qty.	
D27AH-TiN	260	10 ¼	33	1 5/16	1.2	+++++	0.56	1		
D27AHL-TiN	260	10 ¼	33	1 5/16	1.2	+++++	0.56	1		

- TiN coated cutter head for longer service life even in case of hard materials
- Case-hardened HSS edges
- For continuous, straight and curved cuts
- Available in right or left cutting versions



HSS shape and straight cutting snips D27AH



Order number	Overall length		Blade length		↓ max. ↑	⚙️	Weight	PU		V6
	mm	"	mm	"				kg	qty.	
D27AH	260	10 ¼	33	1 5/16	1.2	++++	0.56	1		
D27AHL	260	10 ¼	33	1 5/16	1.2	++++	0.56	1		

- For continuous, straight and curved cuts
- Edges made of case-hardened HSS
- Available in right or left cutting versions



↓
max.
↑ Sheet thickness
(600 N/mm²)

⚙️ Product life expectancy



HSS punch snips D407



Order number	Overall length		Blade length		↓ max. ↑	⚙️	Weight	PU		V6
	mm	"	mm	"				kg	qty.	
D407-275	275	11	42	1 5/8	1.0	++++	0.53	1		
D407-275L	275	11	42	1 5/8	1.0	++++	0.53	1		
D407-300	300	12	43	1 11/16	1.0	++++	0.60	1		
D407-300L	300	12	43	1 11/16	1.0	++++	0.60	1		

- For short, straight and curved cuts
- Edges made of case-hardened HSS
- PVC dipped handles
- Available in right or left cutting versions

HSS shape and straight cutting snips D416



Order number	Overall length		Blade length		↓ max. ↑	⚙️	Weight	PU		V6
	mm	"	mm	"				kg	qty.	
D416-280	280	11	34	1 3/8	1.0	++++	0.61	1		
D416-280L	280	11	34	1 3/8	1.0	++++	0.61	1		

- For continuous, straight and curved cuts
- Cutting edges made of case-hardened HSS
- PVC dipped handles
- Available in right or left cutting versions

HSS pelican snips HSS D418



Order number	Overall length		Blade length		↓ max. ↑	⚙️	Weight	PU		V6
	mm	"	mm	"				kg	qty.	
D418-300	300	12	62	2 7/16	1.0	++++	0.71	1		
D418-350	350	14	65	2 9/16	1.0	++++	0.80	1		

- For long continuous and straight cuts
- Cutting edges made of case-hardened HSS
- PVC dipped handles
- Available only in right cutting version

↓
max.
↑ Sheet thickness
(600 N/mm²)

⚙️ Product life expectancy

Our traditional snips for a reliable cut



Your benefits at a glance:

- 1 Forged cutter head and handle**
Cutter head and handle are drop-forged as a single unit. This is what makes them so robust and reliable.
- 2 Induction hardened cutting edges**
Extra hard cutting edges guarantee more increased durability and optimal cutting results.
- 3 Bolted joint**
All conventional metal snips can be disassembled for easy sharpening, thus extending their service life!

Shape and straight cutting snips D216/D116



Order number	Overall length		Blade length		↓ max. ↑	⚙️	Weight	PU	V5
	mm	"	mm	"					
D216-260	260	10 ¼	30	1 ¾	1.0	++	0.49	5	
D216-260L	260	10 ¼	30	1 ¾	1.0	++	0.49	5	
D216-280	280	11	34	1 ¾	1.0	++	0.58	5	
D216-280L	280	11	34	1 ¾	1.0	++	0.58	5	
D116-260	260	10 ¼	30	1 ¾	1.0	+	0.49	5	
D116-260L	260	10 ¼	30	1 ¾	1.0	+	0.49	5	
D116-260-SB	260	10 ¼	30	1 ¾	1.0	+	0.49	5	
D116-260L-SB	260	10 ¼	30	1 ¾	1.0	+	0.49	5	
D116-280	280	11	34	1 ¾	1.0	+	0.56	5	
D116-280L	280	11	34	1 ¾	1.0	+	0.56	5	
D116-280-SB	280	11	34	1 ¾	1.0	+	0.59	5	
D116-280L-SB	280	11	34	1 ¾	1.0	+	0.59	5	
Order number	Layout						Weight	PU	V5
DSET-SF3	1 x D216-280, 1 x D216-280L and 1 x D218-300 in snips pouch						2.02	1	

- For continuous, straight and curved cuts
- D216 – Painted handles
- D116 – PVC dipped handles
- Available in right or left cutting versions

↓
max.
↑ Sheet thickness
(600 N/mm²)

⚙️ Product life expectancy



Shape and straight cutting snips, without opening stop D216-B-SBSK



Order number	Overall length		Blade length			↓ max. ↑	⚙️	Weight		PU	V5
	mm	"	mm	"	mm			kg	qty.		
D216-280-B-SBSK	280	11	34	1 3/8	1.0	++	0.58	5			
D216-280L-B-SBSK	280	11	34	1 3/8	1.0	++	0.58	5			



- For continuous, straight and curved cuts
- With no opening stop and with extra pointed cutter head
- Edges with micro-serrations for slip-proof working
- Particularly robust, for unusually challenging situations:
Snips completely tempered and burnished.
Cutter inductively hardened
- PVC dipped handles
- Available in right or left cutting versions

Pelican snips D218/D118



Order number	Overall length		Blade length			↓ max. ↑	⚙️	Weight		PU	V5
	mm	"	mm	"	mm			kg	qty.		
D218-300	300	12	62	2 7/16	1.0	++	0.73	5			
D218-300L	300	12	62	2 7/16	1.0	++	0.73	5			
D218-350	350	14	65	2 9/16	1.0	++	0.80	5			
D118-300	300	12	62	2 7/16	1.0	+	0.73	5			
D118-300L	300	12	62	2 7/16	1.0	+	0.73	5			
D118-300-SB	300	12	62	2 7/16	1.0	+	0.74	5			
D118-300L-SB	300	12	62	2 7/16	1.0	+	0.74	5			
D118-350	350	14	65	2 9/16	1.0	+	0.80	5			

- For long continuous and straight cuts
- Extra long blade is ideal for cutting through metal sheets
- D218 – Painted handles
- D118 – PVC dipped handles
- Available as right cutter (in 300 mm dimension also available as left cutter)

↓
max.
↑ Sheet thickness
(600 N/mm²)

⚙️ Product life expectancy

Our traditional snips for a reliable cut



Shape cutting punch snips D214/D114



Order number	Overall length		Blade length		↓ max. ↑	⚙️	Weight		PU	V5
	mm	"	mm	"			kg	qty.		
D214-250	250	10	37	1 7/16	1.0	++	0.47	5		
D214-250L	250	10	37	1 7/16	1.0	++	0.47	5		
D114-250	250	10	37	1 7/16	1.0	+	0.47	5		
D114-250L	250	10	37	1 7/16	1.0	+	0.47	5		

- For short, straight and curved cuts (especially small radii)
- Very slick cutting head
- D214 – Painted handles
- D114 – PVC dipped handles
- Available in right or left cutting versions

Punch snips D207/D107



Order number	Overall length		Blade length		↓ max. ↑	⚙️	Weight		PU	V5
	mm	"	mm	"			kg	qty.		
D207-250	250	10	42	1 5/8	1.0	++	0.49	5		
D207-250L	250	10	42	1 5/8	1.0	++	0.49	5		
D207-275	275	11	42	1 5/8	1.0	++	0.53	5		
D207-275L	275	11	42	1 5/8	1.0	++	0.53	5		
D207-300	300	12	47	1 7/8	1.0	++	0.58	5		
D207-300L	300	12	47	1 7/8	1.0	++	0.58	5		
D107-250	250	10	42	1 5/8	1.0	+	0.49	5		
D107-250L	250	10	42	1 5/8	1.0	+	0.49	5		
D107-250-SB	250	10	42	1 5/8	1.0	+	0.50	5		
D107-250L-SB	250	10	42	1 5/8	1.0	+	0.50	5		
D107-275	275	11	42	1 5/8	1.0	+	0.55	5		
D107-275L	275	11	42	1 5/8	1.0	+	0.55	5		
D107-300	300	12	47	1 7/8	1.0	+	0.60	5		
D107-300L	300	12	47	1 7/8	1.0	+	0.60	5		

- For short, straight and curved cuts
- D207 – Painted handles
- D107 – PVC dipped handles
- Available in right or left cutting versions

↓
max.
↑ Sheet thickness
(600 N/mm²)

⚙️ Product life expectancy



Punch snips with curved blades D208



Order number	Overall length		Blade length		↓ max. ↑	⚙️	Weight		PU	V5
	mm	"	mm	"			kg	qty.		
D208-275	275	11	40	1 9/16	1.0	++	0.51	5		
D208-275L	275	11	40	1 9/16	1.0	++	0.51	5		

- Especially for circular cuts
- Semi-circular edges
- Painted handles
- Available in right or left cutting versions

Universal snips D106



Order number	Overall length		Blade length		↓ max. ↑	⚙️	Weight		PU	V5
	mm	"	mm	"			kg	qty.		
D106-250-SB	250	10	68	2 11/16	1.0	+	0.44	5		

- For straight and curved cuts
- PVC dipped handles
- Available only in right cutting version

Universal snips with wide blade D106A



Order number	Overall length		Blade length		↓ max. ↑	⚙️	Weight		PU	V5
	mm	"	mm	"			kg	qty.		
D106A-250-SB	250	10	68	2 5/8	1.0	+	0.46	5		

- For straight and curved cuts (large radii)
- PVC dipped handles
- Available only in right cutting version

↓
max.
↑ Sheet thickness
(600 N/mm²)

⚙️ Product life expectancy

Our traditional snips for a reliable cut



Berlin pattern snips D202/D102



Order number	Overall length		Blade length		↓ max. ↑	⚙️	Weight		PU	V5
	mm	"	mm	"			kg	qty.		
D202-250	250	10	60	2 3/8	1.0	++	0.47	5		
D202-300	300	12	79	3	1.0	++	0.70	5		
D102-250	250	10	60	2 3/8	1.0	+	0.48	5		
D102-250-SB	250	10	60	2 3/8	1.0	+	0.49	5		
D102-300	300	12	79	3	1.0	+	0.72	5		

- For straight cuts
- D202 – Painted handles
- D102 – PVC dipped handles
- Available only in right cutting version

American pattern snips D146



Order number	Overall length		Blade length		↓ max. ↑	⚙️	Weight		PU	V5
	mm	"	mm	"			kg	qty.		
D146-200	200	8	41	1 5/8	1.0	+	0.32	6		
D146-250	250	10	54	2 1/3	1.0	+	0.47	6		
D146-300	300	12	68	2 11/16	1.0	+	0.67	6		
D146-350	350	14	72	2 13/16	1.0	+	0.75	6		

- For straight cuts
- Available only in left cutting version
- PVC dipped handles

↓ max. ↑ Sheet thickness
(600 N/mm²)

⚙️ Product life expectancy

One-handed cutting of strong steel straps



Safety strap cutter with compound leverage D123S



Order number	Overall length		Blade length		Weight	PU	V5
	mm	"	mm	"			
D123S	260	10 ¼	38	1 ½	0.55	5	
D123S-SB	260	10 ¼	38	1 ½	0.56	5	



- One-handed operation with little effort thanks to double leverage
- Metal fastening will not spring up dangerously due to safety hold mechanism in the snip
- Flat lower jaw easily slips under taut banding
- Can even be used with hardened steel belts (560 N/mm²) with belt widths up to 32 mm, belt thicknesses up to 1 mm
- Induction hardened cutting edge for a long service life
- ERGO-handle for increased comfort – reduced hand fatigue!

Steel strap cutter D122N



Order number	Overall length		Blade length		Weight	PU	V5
	mm	"	mm	"			
D122N	225	9	31	1 ¼	0.40	5	

- The lower holder prevents band ends from springing up
- For band width up to 25 mm, band thickness up to 0.6 mm
- Flat lower jaw easily slips under taut banding
- Painted handles

Steel strap cutter D122A



Order number	Overall length		Blade length		Weight	PU	V5
	mm	"	mm	"			
D122A	260	10 ¼	30	1 ⅜	0.42	5	
D122A-SB	260	10 ¼	30	1 ⅜	0.43	5	

- Flat lower jaw easily slips under taut banding
- High price to performance ratio
- For band width up to 25 mm, band thickness up to 0.6 mm
- PVC dipped handles

High-precision edges



Jewellers' snips D70-1/D71-1



Order number	Description	Overall length		Blade length		Weight	PU	V5
		mm	"	mm	"			
D70-1	Straight edges	180	7	31	1 ¼	0,13	12	
D71-1	Curved edges	175	7	32	1 ¼	0,13	12	

- Closed handles
- Completely nickel coated

Jewellers' snips D72-1



Order number	Description	Overall length		Blade length		Weight	PU	V5
		mm	"	mm	"			
D72-1	Straight edges	180	7	31	1 ¼	0,11	12	

- Open handles
- Completely nickel coated

Jewellers' snips D74-1/D75-1



Order number	Description	Overall length		Blade length		Weight	PU	V5
		mm	"	mm	"			
D74-1	Straight edges	180	7	34	1 ⅜	0,09	12	
D75-1	Curved edges	175	7	33	1 ⅝	0,09	12	

- Open handles
- Completely nickel coated

Jewellers' snips D76-1



Order number	Description	Overall length		Blade length		Weight	PU	V5
		mm	"	mm	"			
D76-1	Straight edges	180	7	26	1	0,14	12	

- Closed handle with spring
- Completely nickel coated

General purpose snips



Strong multi-purpose cutters D52-2



Order number	Overall length		Blade length		↓ ↑ max	Weight	PU	V5
	mm	"	mm	"				
D52-2	200	8	50	2	0.6	0.27	10	

↓
↑
max Sheet thickness
(600 N/mm²)

- Cutting edge and handle forged in one piece for high stability
- Edges with serrations for slip-proof working
- ERGO-handle for increased comfort – reduced hand fatigue!
- Blades are sandblasted and chromium-plated for corrosion protection
- Cuts cold-rolled steel up to 0.6 mm thick

Multi-purpose cutters

D47-2 D48-2 D48A-2 D49-2



Order number	Overall length		Blade length		Weight	PU	V5
	mm	"	mm	"			
D47-2	140	5 ½	31	1 ¼	0.05	15	
D48-2	190	7 ½	42	1 ⅝	0.11	10	
D48A-2	190	7 ½	36	1 ⅜	0.11	10	
D49-2	165	6 ½	--	--	0.12	10	

D47 D48 D48A D49



Order number	Overall length		Blade length		Weight	PU	V5
	mm	"	mm	"			
D47	140	5 ½	31	1 ¼	0.08	15	
D48	190	7 ½	42	1 ⅝	0.12	10	
D48A	190	7 ½	38	1 ½	0.11	10	
D49	165	6 ½	--	--	0.12	10	

D47-2 / D48-2 / D48A-2 / D49-2:

- ERGO-handle for increased comfort – reduced hand fatigue!
- Stainless steel blades

D47 / D48 / D48A / D49:

- Edges with serrations for slip-proof working
- Stainless steel blades

D48A-2 / D48A:

- Offset blades

D49-2 / D49:

- For multicore cables with diameter up to 10 mm

Combinox D50



Order number	Overall length		Blade length		Weight	PU	V5
	mm	"	mm	"			
D50	190	7 ½	40	1 ⅞	0.14	10	

- Stainless steel blades
- Ergonomically designed handles with soft-insert
- With wire guide for cutting binding wire to Ø 2.5 mm
- Circular cutting to stop for stripping cable from Ø 1.0 to 1.5 mm

MULTISNIP Master D51A



Order number	Overall length		Blade length		↓ ↑ max	Weight	PU	V5
	mm	"	mm	"				
D51A	235	9 ¼	50	2	0.4	0.19	5	

↓
↑
max Sheet thickness
(600 N/mm²)

- For long continuous straight and curved cuts
- All metal parts are made of stainless steel
- Handle made of robust fibreglassreinforced plastic with a soft material insert

Special tools for specialists



Seaming and clinching pliers D33.../D34.../D35...

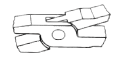


Order number	Form	Pivot screw version	Jaw width	Overall length		Weight		PU	V6
				mm	"	kg	qty.		
D33-60	straight	passed through	60	280	11	0.60	6		
D331-40	straight	put on	40	280	11	0.56	6		
D331-60	straight	put on	60	280	11	0.63	6		
D331-80	straight	put on	80	320	12 3/4	0.92	5		
D34-60	45° bent	passed through	60	270	10 3/4	0.72	6		
D341-40	45° bent	put on	40	270	10 3/4	0.69	6		
D341-60	45° bent	put on	60	270	10 3/4	0.63	6		
D341-80	45° bent	put on	80	320	12 3/4	0.92	5		
D35-60	90° bent	passed through	60	255	10	0.71	6		
D351-60	90° bent	put on	60	255	10	0.67	6		

- Forged in quality steel
- Black powder coated
- Minimum jaw depth straight 60 mm
- Minimum jaw depth bent 50 mm



put on



passed through

Seaming and clinching pliers, PVC-coated handle D33...-P/D34...-P/D35...-P



Order number	Form	Pivot screw version	Jaw width	Overall length		Weight		PU	V6
				mm	"	kg	qty.		
D33-60-P	straight	passed through	60	280	11	0.60	6		
D331-60-P	straight	put on	60	280	11	0.62	6		
D34-60-P	45° bent	passed through	60	270	10 3/4	0.64	6		
D341-60-P	45° bent	put on	60	270	10 3/4	0.63	6		
D35-60-P	90° bent	passed through	60	255	10	0.71	6		
D351-60-P	90° bent	put on	60	255	10	0.67	6		

- Forged in quality steel
- Black powder coated
- PVC-coated handle
- Minimum jaw depth straight 60 mm
- Minimum jaw depth bent 50 mm



put on



passed through



Mini-folding pliers D331-22/D341-22

Order number	Form	Pivot screw version	Jaw width		Overall length		Weight		PU	V6
			mm	"	mm	"	kg	qty.		
D331-22	straight	put on	22	180	7	0.21	10			
D341-22	45° bent	put on	22	180	7	0.19	10			

- For small and precise seaming and bending operations
- Forged from quality steel
- PVC-coated handles
- Completely hardened
- Jaw depth straight 30 mm
- Jaw depth bent 28 mm



Flat-nosed pliers for sheet metal work D301

Order number	Pivot screw version	Overall length		Weight		PU	V6
		mm	"	kg	qty.		
D301	put on	240	9 1/2	0.40	6		

- Forged from quality steel
- PVC-coated handles
- Flat jawed pliers
- Jaw depth 45 mm
- Serration every 0.8 mm



Round nosed pliers D311

Order number	Pivot screw version	Overall length		Weight		PU	V6
		mm	"	kg	qty.		
D311	put on	260	10 1/4	0.38	6		

- Forged from quality steel
- PVC-coated handles
- Round jawed pliers
- Jaw depth 50 mm
- Serration every 1 mm



Folding pliers D355

Order number	Form	Pivot screw version	Jaw width	Overall length		Weight		PU	V6
			mm	mm	"	kg	qty.		
D355	straight	put on	30	250	10	0.43	5		

- Forged from quality steel
- Bronzed
- PVC-coated handles



Corner seaming and clinching pliers D335

Order number	Form	Pivot screw version	Jaw width	Overall length		Weight		PU	V6
			mm	mm	"	kg	qty.		
D335	straight	put on	60	280	11	0.73	5		

- Forged from quality steel
- Bronzed
- PVC-coated handles
- Jaw depth 65 mm

Special tools for specialists



Squeeze folding pliers D336



Order number	Form	Pivot screw version	Jaw width	Overall length		Weight	PU	V6
			mm	mm	"	kg	qty.	
D336	gerade	durchgesteckt	80	320	12 3/4	0,78	5	

- Forged in quality steel
- Burnished
- PVC-coated handles
- Jaw depth 80 mm

Crimper D36



Order number	Overall length		Weight	PU	V6
	mm	"	kg	qty.	
D36	250	10	0,47	1	

- 3 bottom- and 2 top jaws enable quick and efficient work
- Self-opening
- Completely galvanised
- PVC-coated handles
- Jaw depth 28 mm

Gutter support bowing pliers D396



Order number	Overall length		Weight	PU	V6
	mm	"	kg	qty.	
D396	680	20	3,10	1	

- 10 mm recess width for gutter irons up to 40 x 6 mm
- Head made of rust-proof malleable cast iron
- Gliding role for protecting the plastic-coated gutter irons

The practical everyday helpers



Folding utility knife DBK-EU



Order number	Overall length		Blade length		Weight	PU		V6
	mm	"	mm	"		kg	qty.	
DBKPH-EU	160	6 ¼	28	1 ⅛	0.18	12		
DBKWH-EU	160	6 ¼	28	1 ⅛	0.20	12		
DBKAH-EU	160	6 ¼	28	1 ⅛	0.14	12		

- **DBKPH-EU:** Comfortable plastic handle; thumb cushion for max. contact pressure; blade compartment with 5 replacement blades included
- **DBKWH-EU:** High quality wooden handle
- **DBKAH-EU:** Light weight aluminium handle
- Quick blade exchange
- Belt clip

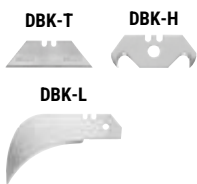
Knife-set DBKPH



Order number	Layout	Weight	PU		V6
			kg	qty.	
DBKPH-SET	DBKPH Folding locking utility knife with convenient nylon storage case <ul style="list-style-type: none"> ■ + 15 pc. standard blade DBK-T ■ + 5 pc. hook blade DBK-H ■ + 2 pc. linoleum blade DBK-L ■ + 2 pc. scoring blade DBK-A 	0.56	8		

- Knife with comfortable plastic handle
- Practical nylon zip-up case
- Four different blades for different tools

Spare blades DBK



Order number	Overall length		Content per unit	Weight	PU		V6
	mm	"			pcs.	kg	
DBK-T	60	2 ⅜	10	0.05	50		
DBK-H	50	2	10	0.05	1		
DBK-L	87	3 ½	5	0.07	1		

- Suitable for all BESSEY bladed folding utility knives

Multitool DBST



Order number	Overall length open		Overall length closed		Blade length		Weight	PU		V6
	mm	"	mm	"	mm	"		kg	qty.	
DBST	175	7	100	4	55	2 ⅜	0.36	8		

- 1 Multitool with 7 options: Shears, blade, saw, file, Phillips head screwdriver and large and small slotted screwdriver
- Cuts: Leather, rope, vinyl, thin cable, cord, thin plastic, paper and much more besides
- With a robust belt pouch for secure, it provides handy storage
- Stainless steel handle with soft cushioned elements for slip-free work

Clamping tools and Cutting tools by professionals for professionals



When it comes to innovative solutions for clamping and fixing workpieces and cutting sheet metal, this is the right place. No matter if classic clamps, traditional sheet metal snips or special solutions are required for special work requirements, BESSEY offers the right clamping and cutting tool for every craftsman in wood and metalworking in order to optimally support it in its work.



Detailed information
about all products at
www.bessey.de/en-gb

Clamping tools for woodworking



Malleable cast iron
screw clamps



Parallel clamps



Angle clamps



Door frame
assembly tools

Clamping tools for metalworking



High-performance
clamps



Self-adjusting
toggle clamps



Clamping elements for
welding tables



Machine table
clamps

**BESSEY
Imagefilm**



BESSEY Tool GmbH & Co. KG ■ Mühlwiesenstraße 40
74321 Bietigheim-Bissingen, Germany
Fon +49 7142 401-0 ■ Fax +49 7142 401-452
E-Mail: tool-info@bessey.de

Your dealer:

More information
www.bessey.de

