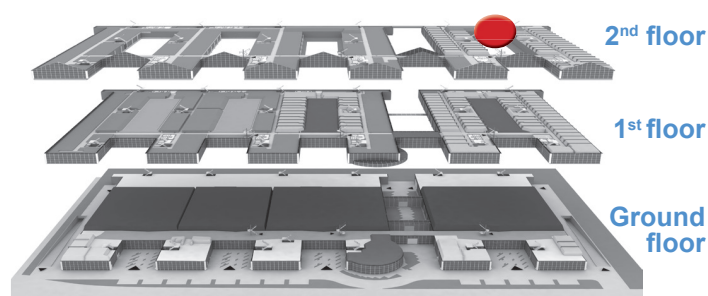


MOC – Event Center Messe München

DETAILS ON STUDIO E/F IN ATRIUM 4 ON THE 2nd FLOOR

Spaces/rooms	Floor space in m ²	 Theater	 Classroom	 Banquet
Studio E/F	440 m ² gross	200	100	-

Our studios are directly connected to the atrium and feature glass facades. Enhance your event with a lounge or throw a party in your own club. Your guests will enjoy a full view of events from this preferred location.



Technical data	
Size	<ul style="list-style-type: none"> 440 m² gross floor space
Floors	<ul style="list-style-type: none"> Raw floor: cement screed on noise impact/thermal insulation layers Floor covering: wall-to-wall carpeting, wheelchair compatible, flame retardant Hallways: wall-to-wall carpeting
Room height	<ul style="list-style-type: none"> The maximum construction height depends on the respective ceiling height. The minimum clearance required to the ceiling is 60 cm.
Ceiling	<ul style="list-style-type: none"> Suspended acoustic ceilings Integrated ventilation Ceiling suspensions are not possible and not permitted
Walls	<ul style="list-style-type: none"> Plasterboard on stud frame (walls between showrooms and hallways)
Windows	<ul style="list-style-type: none"> Equipped with sun shades
Doors	<ul style="list-style-type: none"> Partly steel and glass doors: approx. 1.10 m x 2.10 m Partly doors with glazed portions: approx. 2 m x 2.10 m Partly wooden doors with glass panes: approx. 0.96 m x 2.10 m
Load capacity	<ul style="list-style-type: none"> Floor load max. 500 kg/m² Trolleys must be fitted with plastic or rubber wheels to avoid damage Metal wheels or casters are not permitted
Communication	<ul style="list-style-type: none"> Telephone (optional) IP connection (optional) W-LAN for organizers (optional) Broadband cable connection (optional)

MOC – Event Center Messe München

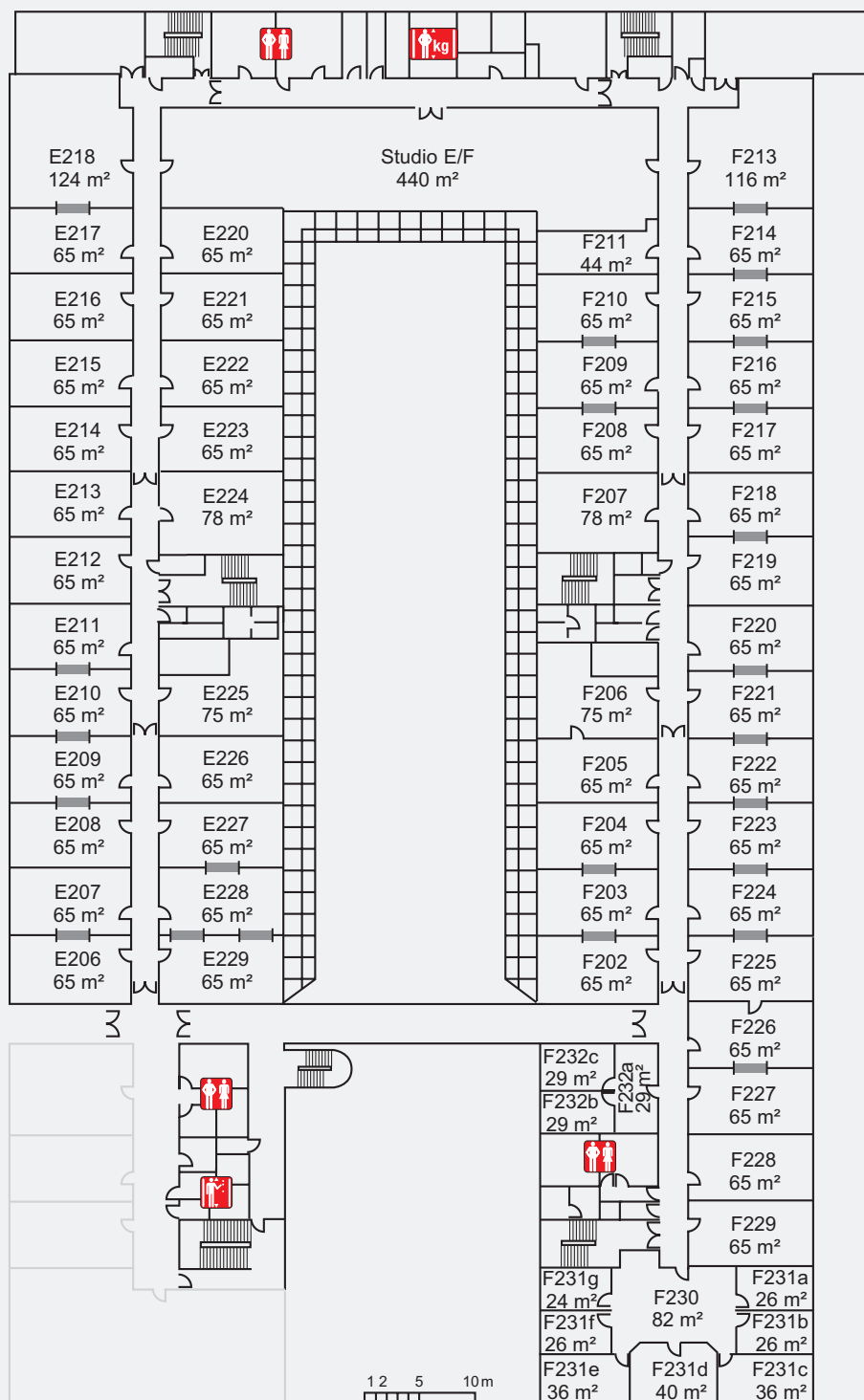
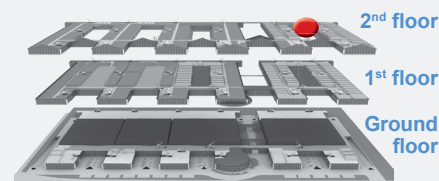
DETAILS ON STUDIO E/F IN ATRIUM 4 ON THE 2nd FLOOR

Technical data	
Electrical installations	<ul style="list-style-type: none"> Multiple 3-kW outlets in the walls Two separate circuits, max. 6 kW per room Higher output possible on request
Indoor climate	<ul style="list-style-type: none"> Heating and cooling from separate appliances Cooling: 10 °C under outside temperature
Lighting	<ul style="list-style-type: none"> Ceiling and spotlights 300 Lux
Public address/ sound system	<ul style="list-style-type: none"> For announcements Can be isolated to specific areas
Sanitary Facilities	<ul style="list-style-type: none"> One WC area per section, with separate facilities for handicapped
Water connection	<ul style="list-style-type: none"> Sanitary connections are located in the front and rear atrium area and can be installed upon request
Access and loading	<ul style="list-style-type: none"> The freight elevator and self-operated lifts can be used in the delivery zones on the ground floors and on the 2nd basement floor for the delivery of heavy and bulky goods The passage to the atrium is 2.10 m wide and 2 m tall The freight elevator must be operated by load-lift driver, subject to booking for set-up and dismantling times
Dimensions of load lift	<ul style="list-style-type: none"> Height: 2.60 m Inside cabin width: 3 m Door width: 2.50 m Cabin depth: 5.37 m Capacity: 8,000 kg
Dimensions self-operated lift	<ul style="list-style-type: none"> Height: 2.50 m Inside cabin width: 2 m Door width: 1.10 m Cabin depth: 2.50 m Capacity: 2,400 kg
Fire Protection	<ul style="list-style-type: none"> The emergency exit door facing the aisle leads directly to an escape/rescue route and must be kept clear of fittings and stored goods at all times. The door must be unlocked when persons are present in the room.

MOC – Event Center Messe München


OVERVIEW STUDIO E/F

ATRIUM 4, 2nd FLOOR



Room	Theater	Classroom
E206 – 217	40	34
E218	70	50
E220 – 229	40	34
F202 – 210	40	34
F211	30	10
F213	50	40
F214 – 229	40	34
F230	Passage/access to F 231 et seq.	
F231a – 231b	10	-
F231c – 231e	30	10
F231f – 231g	10	-
F232a – 232c	10	-
Total: 61	Area: 3,768 m²	
Studio E/F	200	100

 WC |
  Passenger lift |
  Load lift |
  removable wall, width 3 m, height 2.12 m

 Theater |
  Classroom