






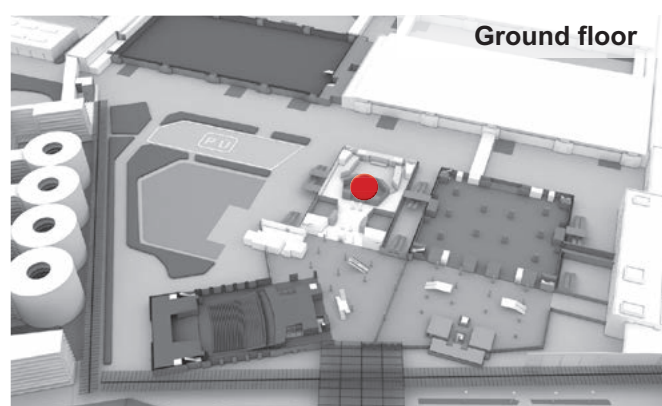
DETAILS ROOM 4

including technical specifications and seating configurations

Areas/ rooms	Area in m ²	 Theater	 Classroom	 Banquet	 U-shaped	 Block
Room 4	200	202	96	112	34	48
Room 4a	85	86	40	48	22	28
Room 4b	85	86	40	48	22	28

Room 4: Perfect for Events with up to 202 Guests and as an Additional Catering Area

Room 4 can be divided lengthwise into two areas with parallel facilities. With 200 m² of floor space, Room 4 has a maximum capacity of 202 theater seats, 96 seats in classroom format or 112 banquet-style seats. Room 4 is ideal for small group projects or presentations with up to 202 guests. Due to its location on the ground floor, it can be used as an additional catering area in conjunction with the foyer.



Rooms 4a and 4b: Perfect for Events with up to 86 Guests

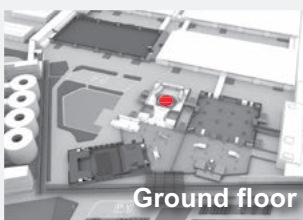
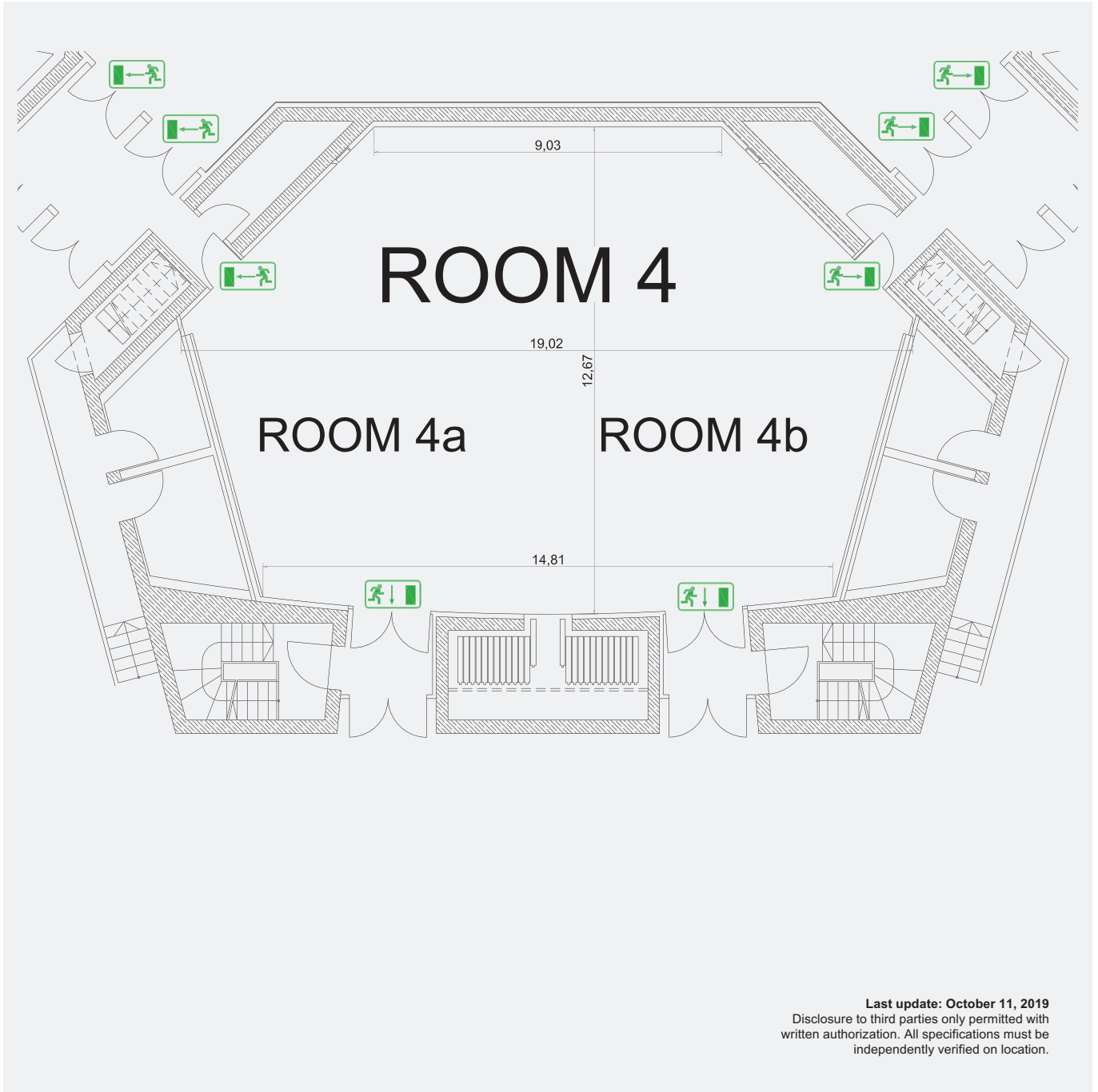
The Rooms 4a and 4b are situated on the ground floor. They each offer capacity for 86 row seats on 85 m², 40 classroom seats or 48 seats in banquet style. Facilities include a 4.50 x 4.50 m movie screen, lighting and latest media technology. These rooms are particularly suited for events such as workshops with up to 86 guests.

Specifications

Location	<ul style="list-style-type: none"> Deliveries on north side of building via delivery entrance in foyer Alternate delivery: via two elevators (2 m wide, 3 m long, max. 2,000 kg) next to Room 5
Suitable for	<ul style="list-style-type: none"> Room 4: Smaller presentations, group work. If equipped with bistro tables and used with the foyer, also suitable for catering purposes Rooms 4a and 4b: Small workgroups and workshops
Size/capacity	<ul style="list-style-type: none"> Room 4: 200 m², seating for 202 people in rows, 96 people with classroom seating, 112 people with banquet seating Rooms 4a and 4b: 85 m², seating for 86 people in rows, 40 people with classroom seating, 48 people with banquet seating Other seating arrangements possible with authorization from fire department

Specifications

Special features	<ul style="list-style-type: none">■ Room height 4.50 m■ Color of room: light gray■ Room 4 can be partitioned into 2 separate soundproof rooms (see Rooms 4a and 4b).■ Permissible floor load: 500 kg/m² (5 kN/m²)
Media equipment	<p>Room 4 (4a and 4b) is equipped with 32+8-channel digital mixing console and an L-Acoustics sound system.</p> <ul style="list-style-type: none">■ 6-channel UHF microphone system■ Digital interpretation system■ PTZ camera in each partitioned room■ Additional media technology can be installed in partitioned rooms.■ Audio and video cross-connections into other halls and rooms possible
Movie screens	<ul style="list-style-type: none">■ The 3 movie screens (one each in Rooms 4, 4a and 4b) are rolled up onto drums and can be lowered when needed. The main screen in the room has a visible projection area of 7.30 m x 4.20 m (w x h), and 3.90 m x 3.30 m each in the partitioned rooms (w x h).
Overhead machinery	<ul style="list-style-type: none">■ Room 4: 3 machine hoists (MZ 1–3) with a maximum capacity of 500 kg each are located above the performance area. MZ 1 (RR 60 tubular piping, 3/5 mm) is 9.80 m long and can be moved 1 m to the side.■ Rooms 4a and 4b: 1 machine hoist with a max. capacity of 500 kg above the performance area
Lighting	<ul style="list-style-type: none">■ There is a lighting hoist on the ceiling of each room (Room 4a and Room 4b). Highest position: 4.50 m above room level. Distance from stage: 2.50 m. The standard configuration is two Fresnel-lens spotlights and two profile spotlights per hoist. A sufficient number of dimmable and fixed-current outlets (safety-contact and CEE plugs) as well as DMX 512 connections are available. Infinitely dimmable downlights are used to evenly light the entire room. Like the lighting for the performance area, they can be controlled from the lighting console (Grand MA Micro) or the DMX 512 network. There are also control panels at both entrances that can be used to adjust the lighting in the room.



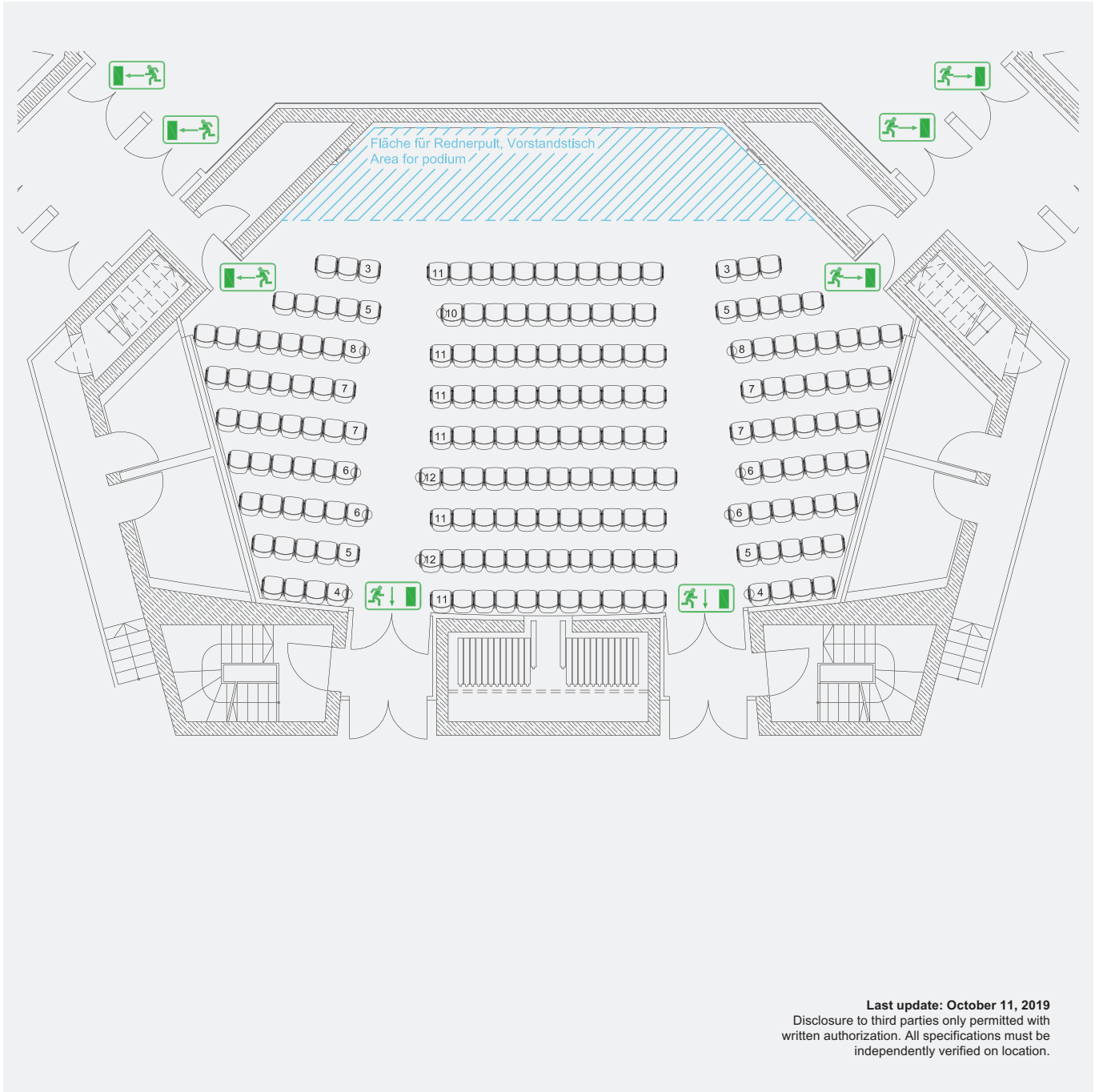
 Escape route

Room 4
200 m ²

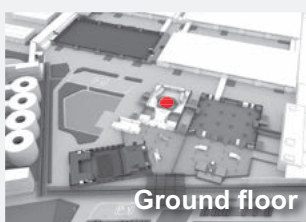
Room 4a and 4b
85 m ² each

ICM – International Congress Center Messe München

ROOM 4: THEATER SEATING



Last update: October 11, 2019
Disclosure to third parties only permitted with written authorization. All specifications must be independently verified on location.



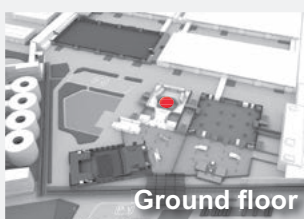
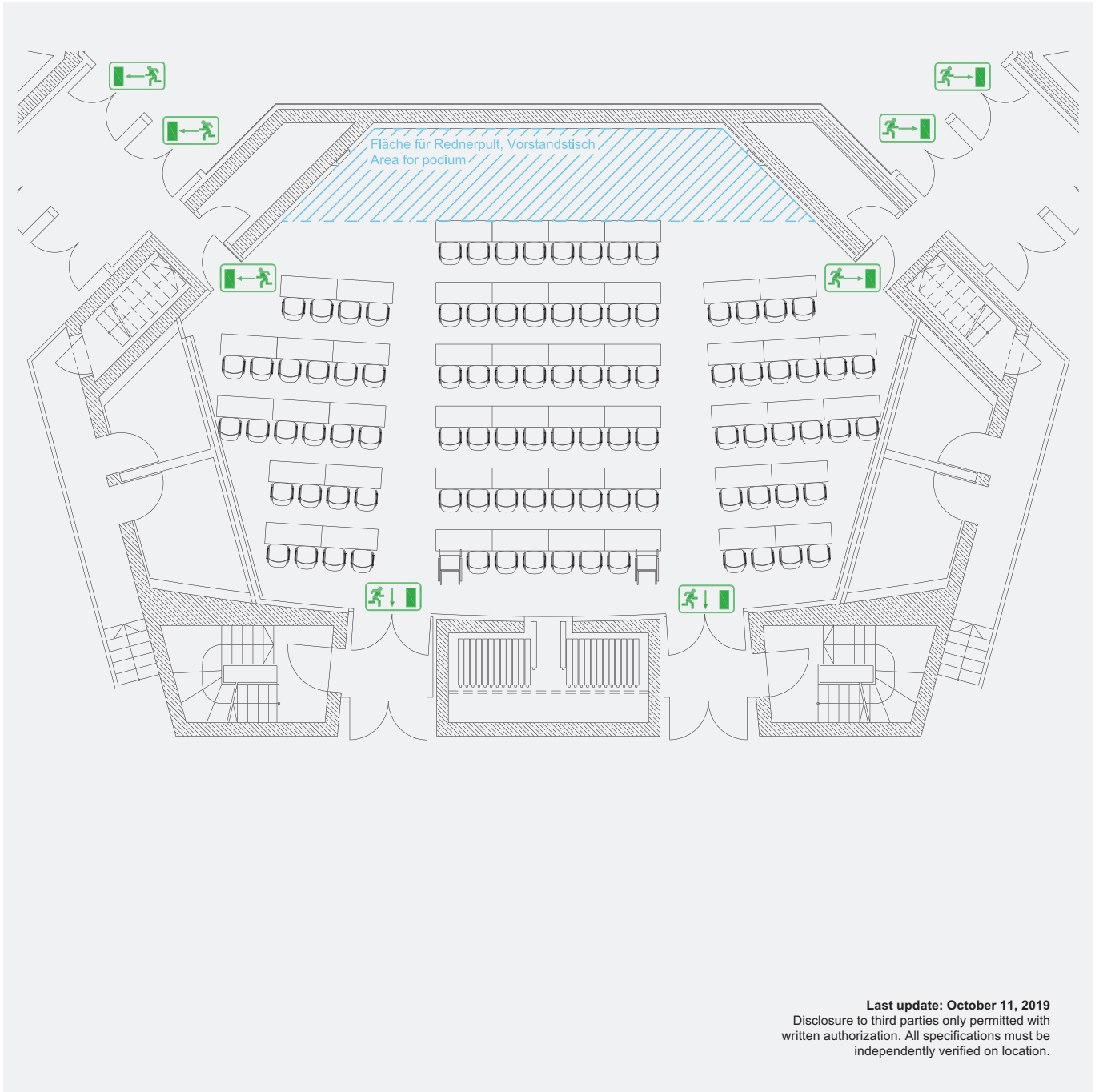
 Escape route

Area in m ²
200

 Theater
202

ICM – International Congress Center Messe München

ROOM 4: CLASSROOM SEATING



 Escape route

Area in m²

200

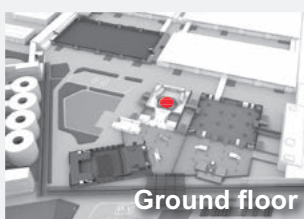
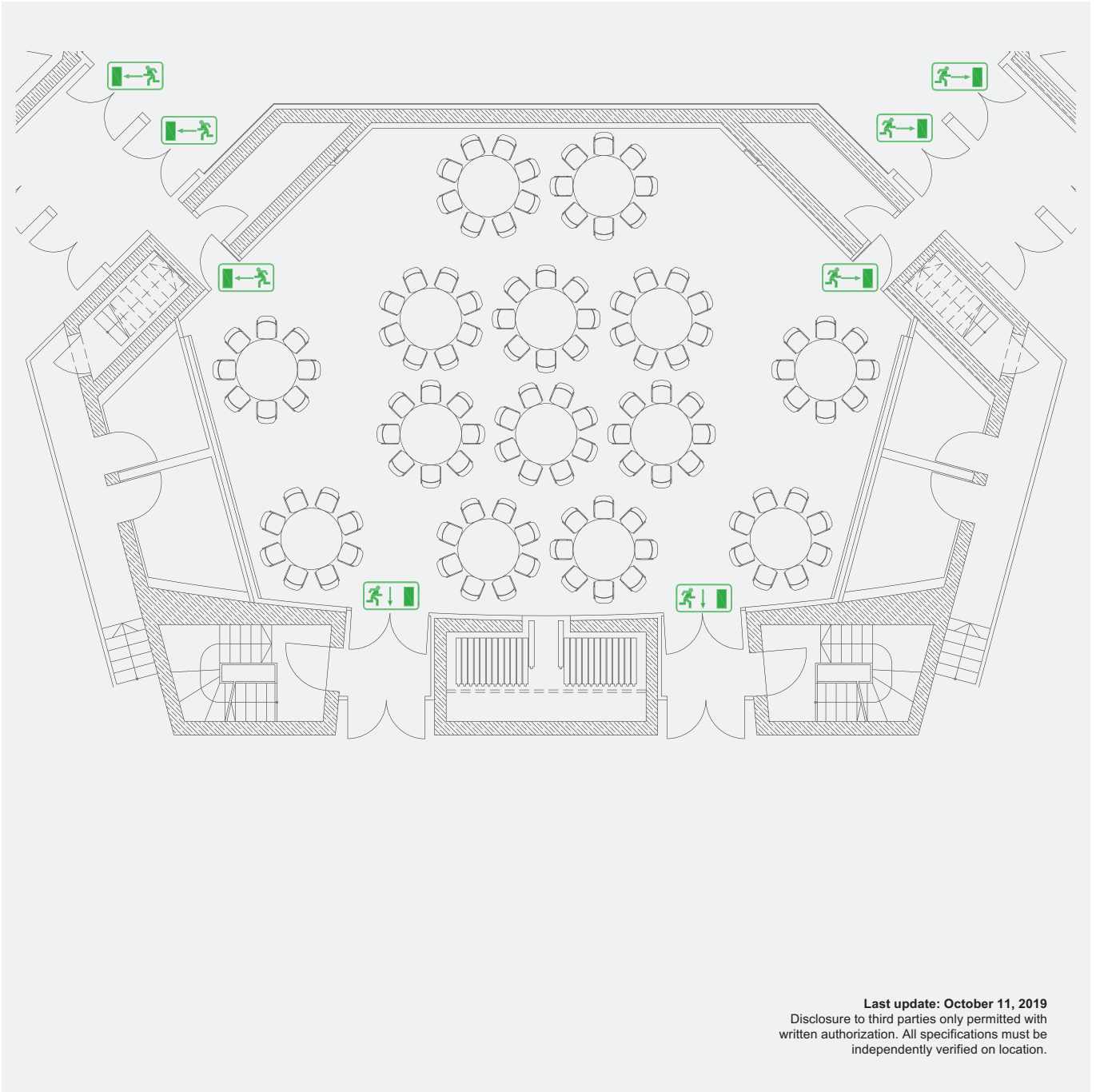



Classroom

96

ICM – International Congress Center Messe München

ROOM 4: BANQUET SEATING



 Escape route

Area in m²

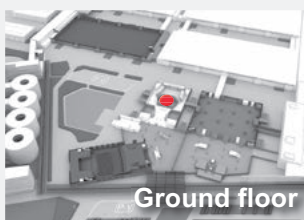
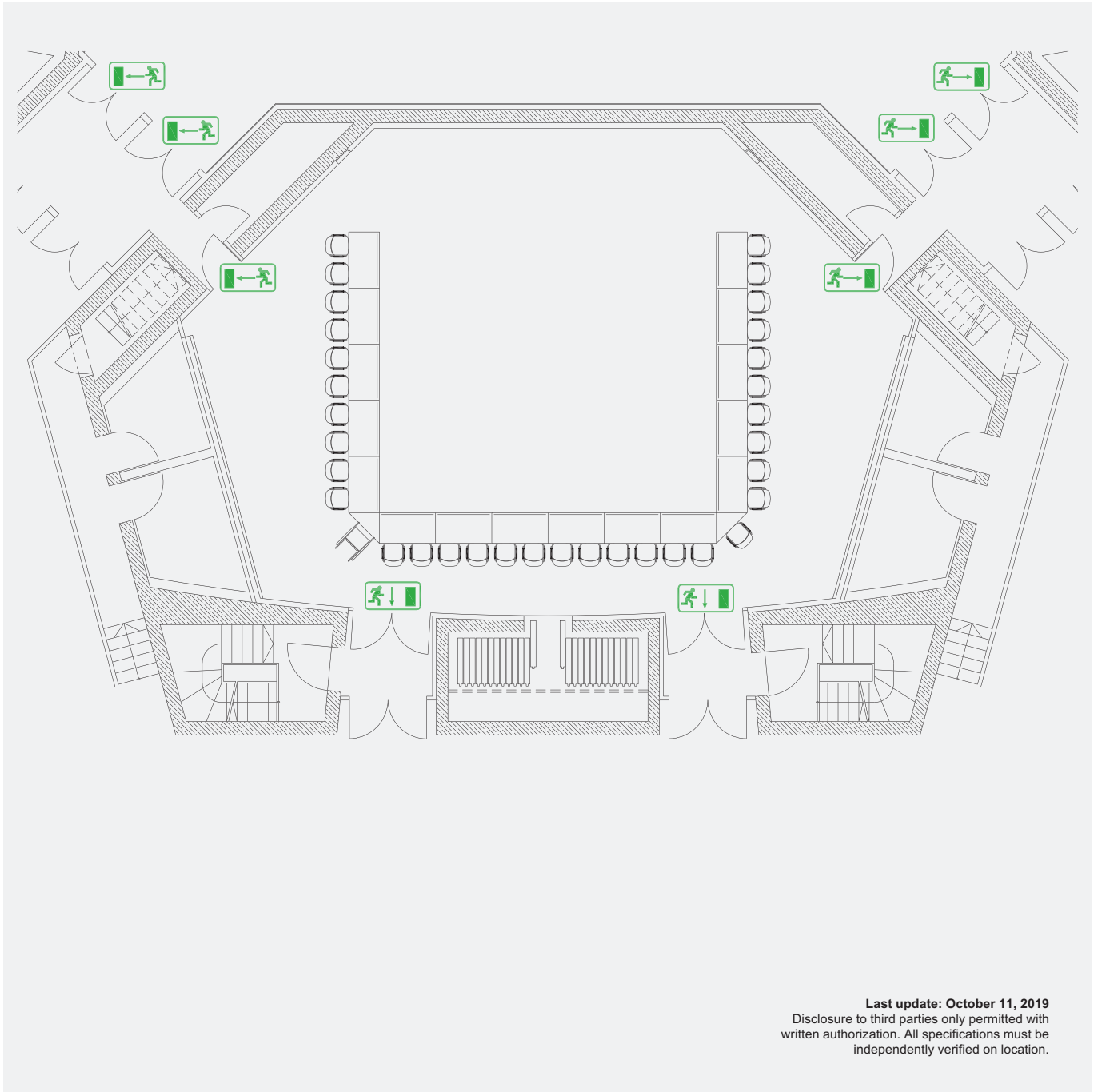
200


 Banquet

112

ICM – International Congress Center Messe München

ROOM 4: U-SHAPED SEATING



 Escape route

Area in m²

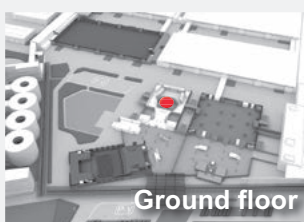
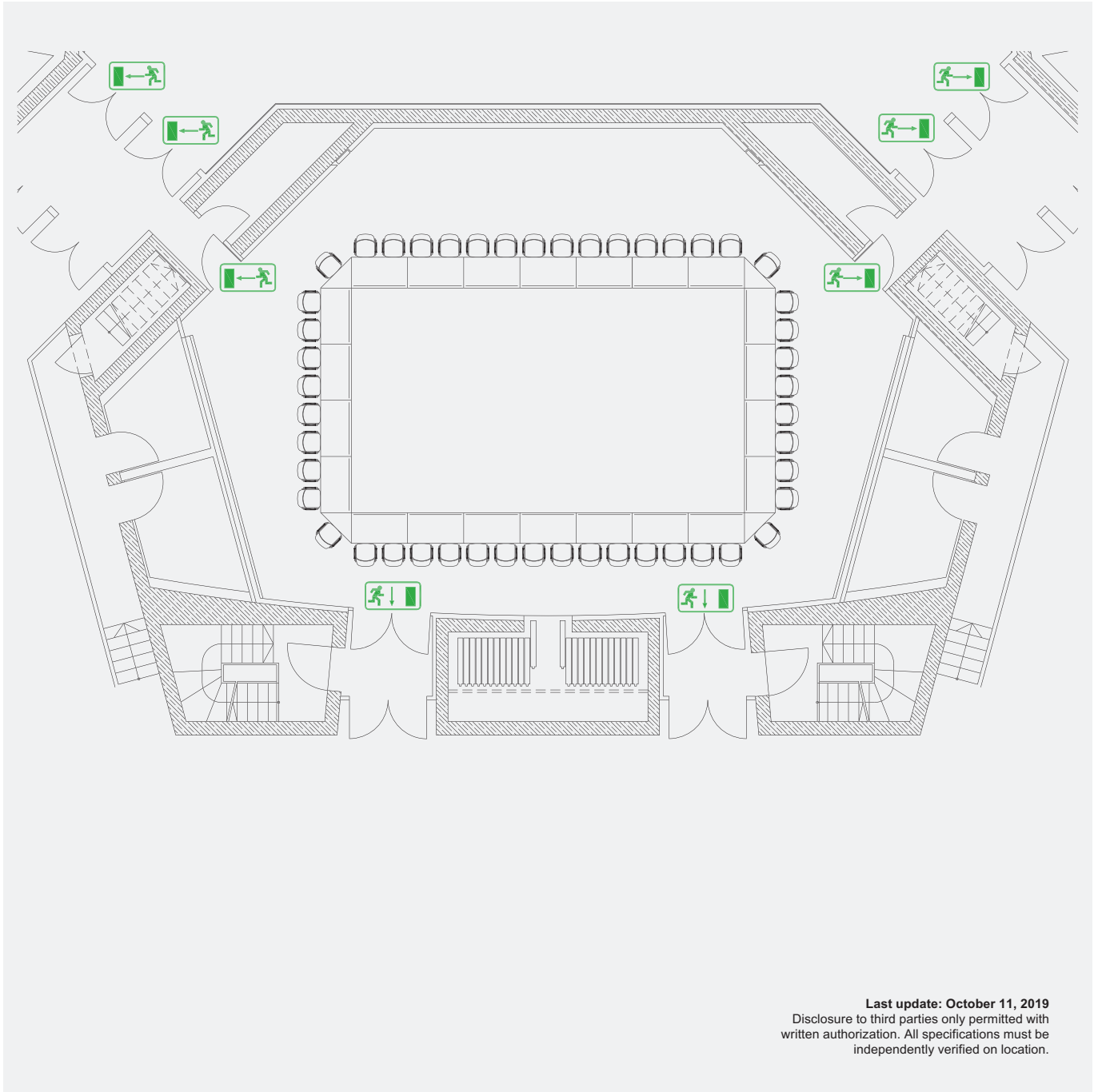
200


 U-shaped

34

ICM – International Congress Center Messe München

ROOM 4: BLOCK SEATING



 Escape route

Area in m²

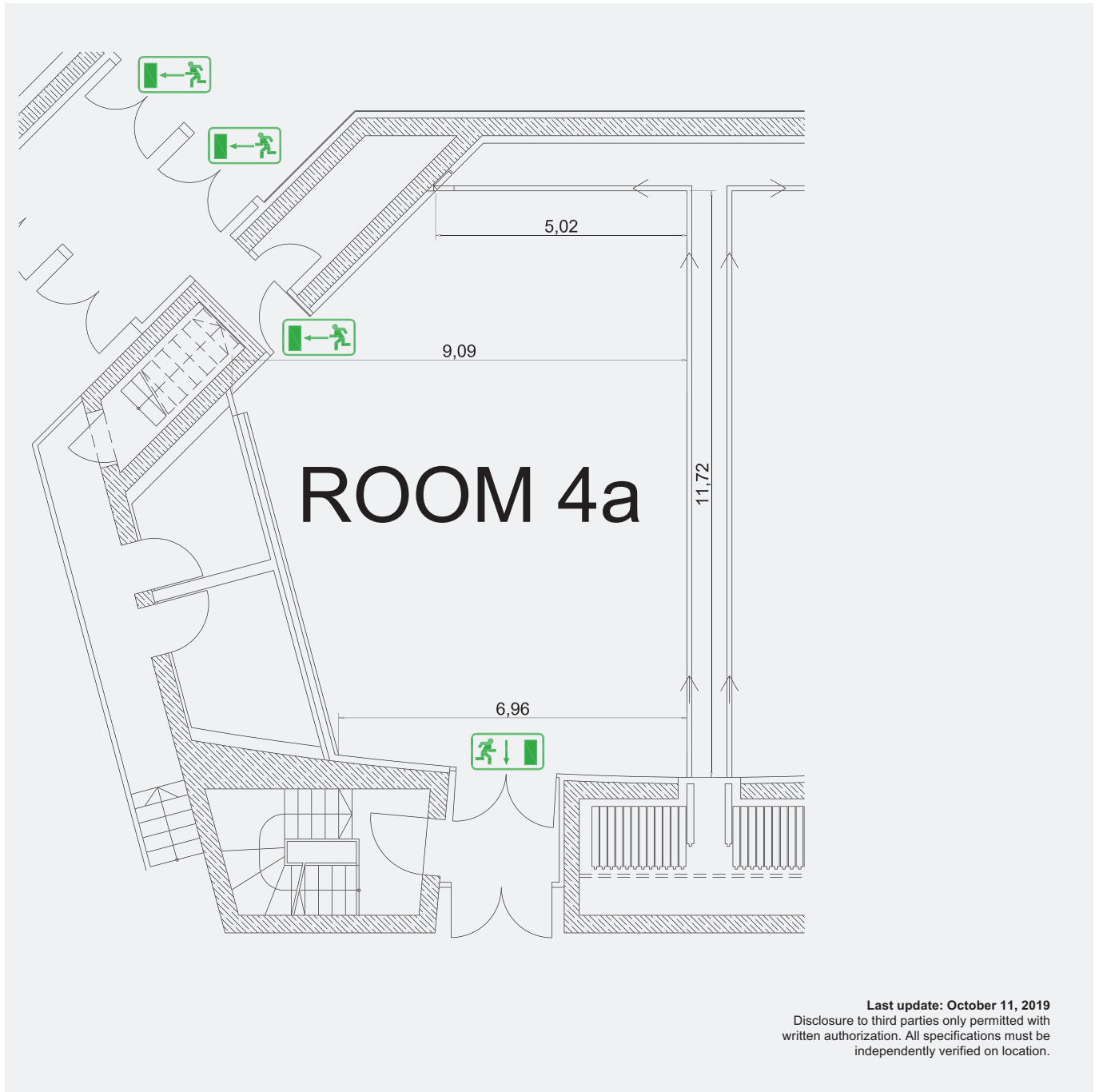
200

 Block

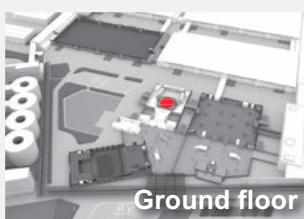
48


ICM – International Congress Center Messe München

ROOM 4a: EMPTY



Last update: October 11, 2019
Disclosure to third parties only permitted with written authorization. All specifications must be independently verified on location.

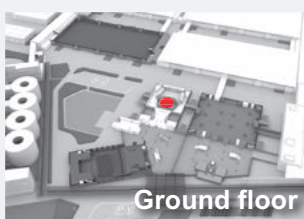
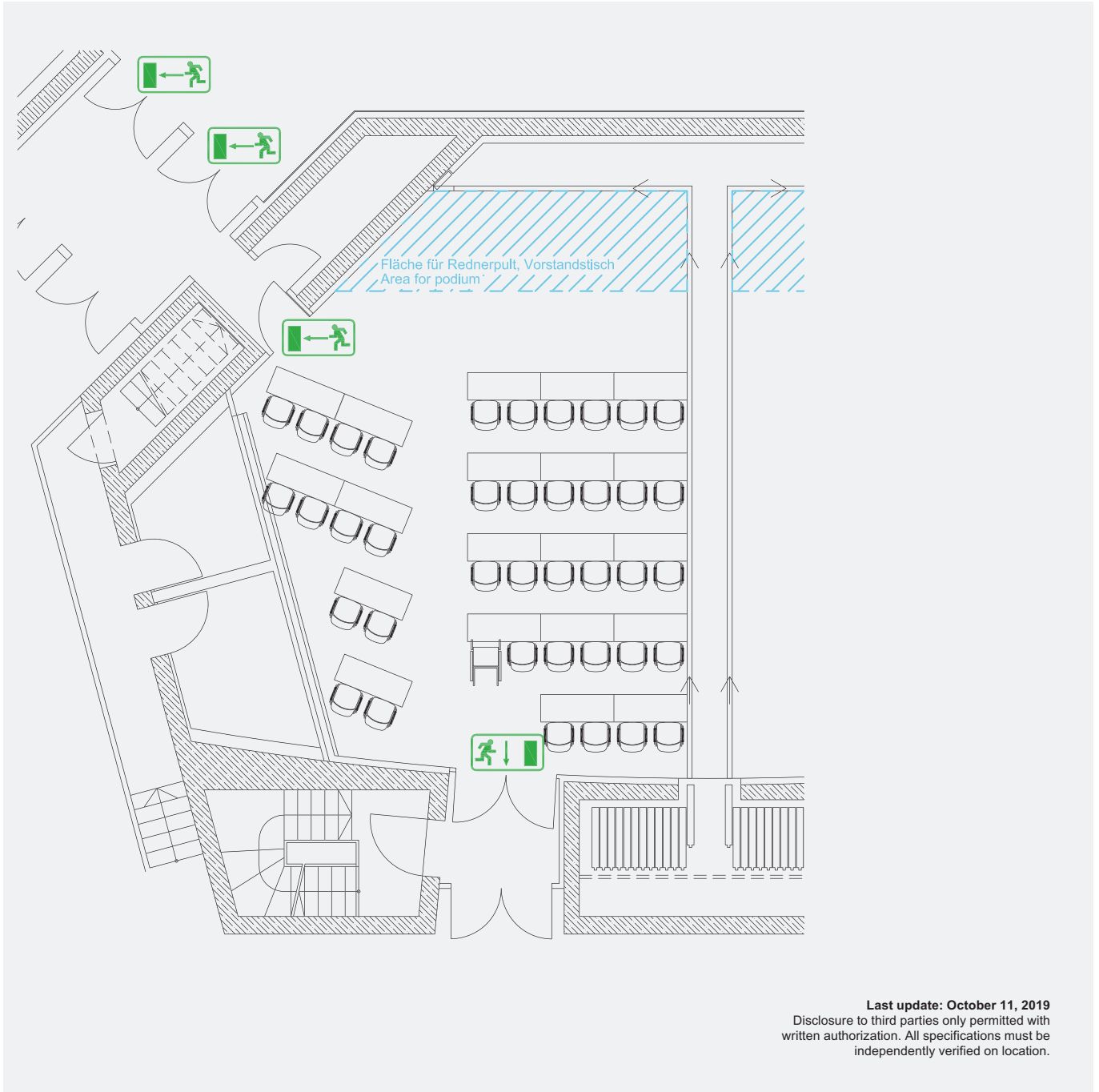



 Escape route

Area in m ²
85

ICM – International Congress Center Messe München

ROOM 4a: CLASSROOM SEATING



 Escape route

Area in m²

85

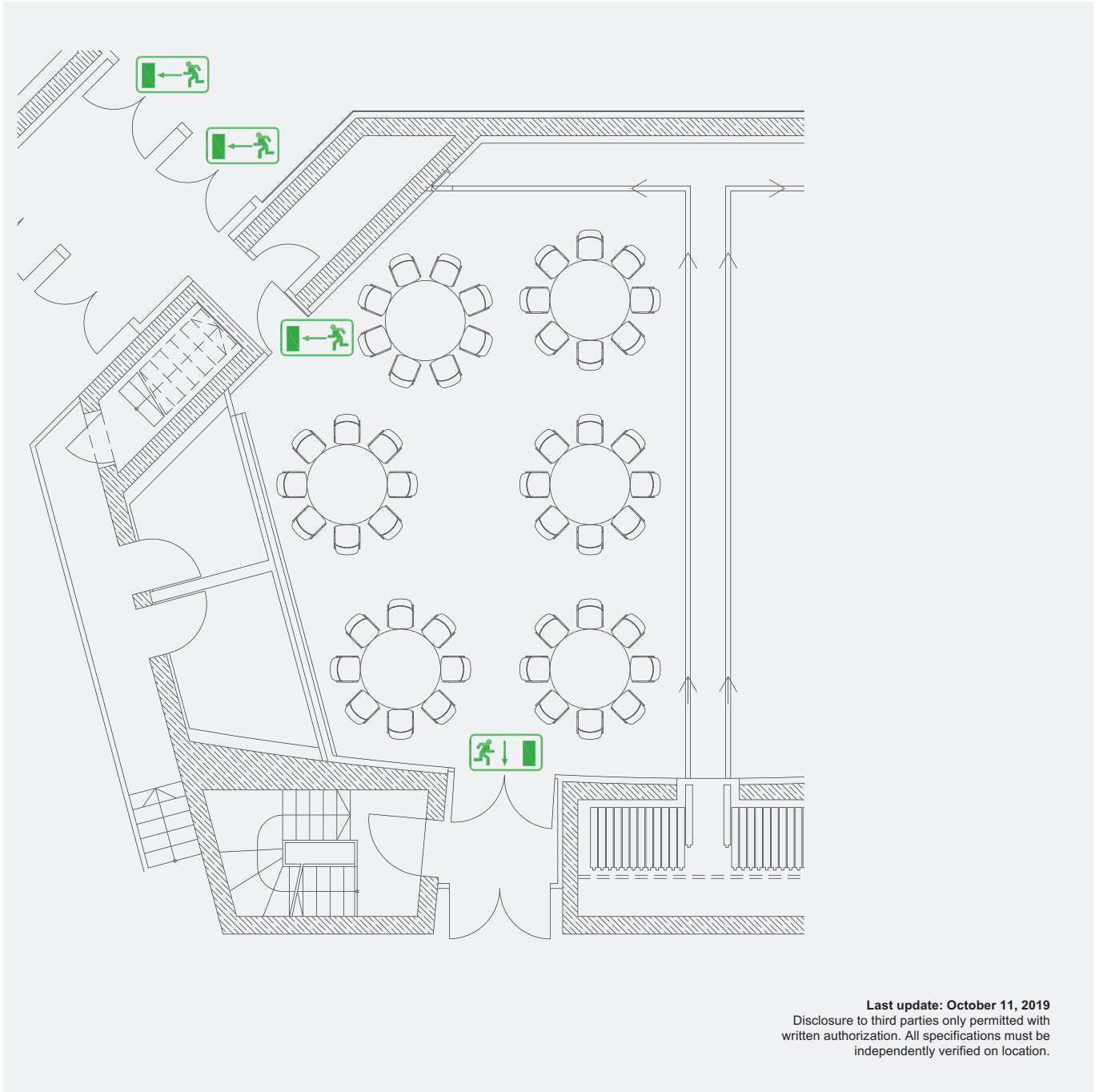


Classroom

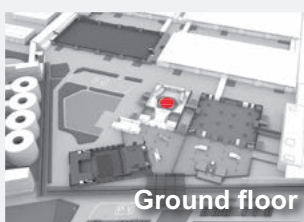
40

ICM – International Congress Center Messe München

ROOM 4a: BANQUET SEATING



Last update: October 11, 2019
Disclosure to third parties only permitted with written authorization. All specifications must be independently verified on location.



 Escape route

Area in m²

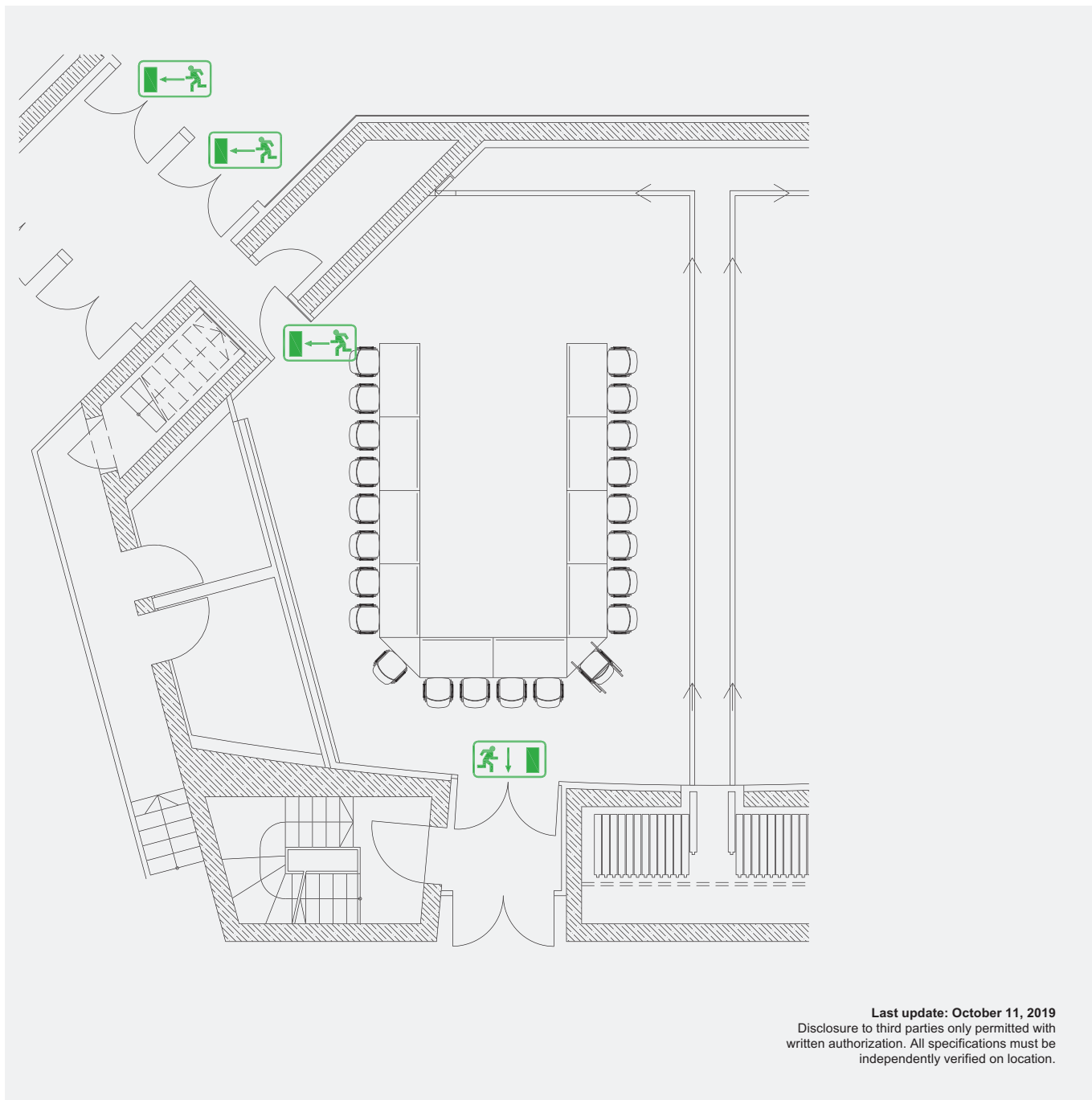
85

 Banquet

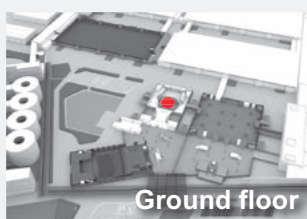
48

ICM – International Congress Center Messe München


ROOM 4a: U-SHAPED SEATING



Last update: October 11, 2019
Disclosure to third parties only permitted with written authorization. All specifications must be independently verified on location.



Ground floor

 Escape route

Area in m²

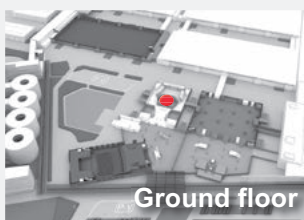
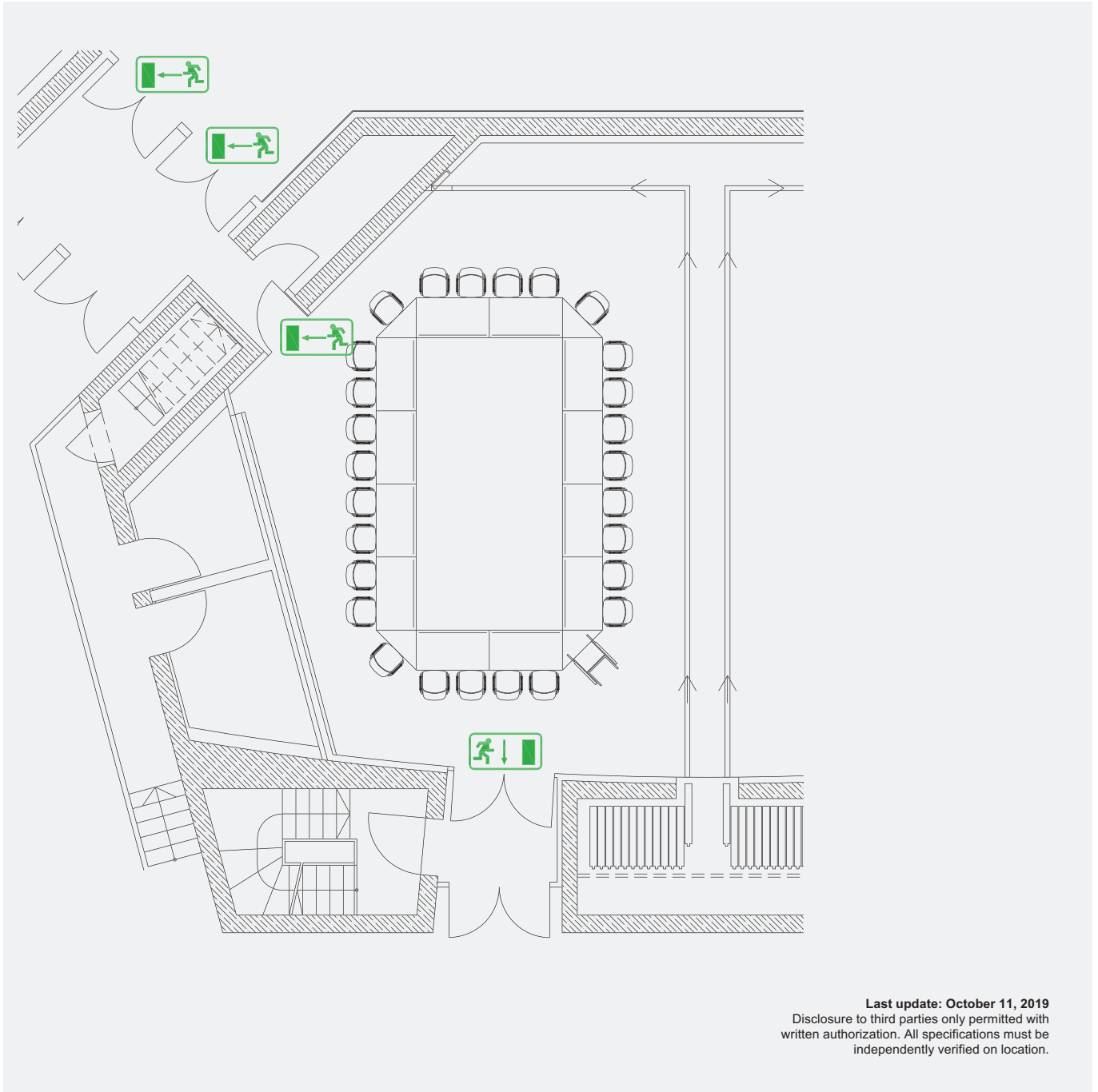
85

 U-shaped

22

ICM – International Congress Center Messe München

ROOM 4a: BLOCK SEATING



 Escape route

Area in m²

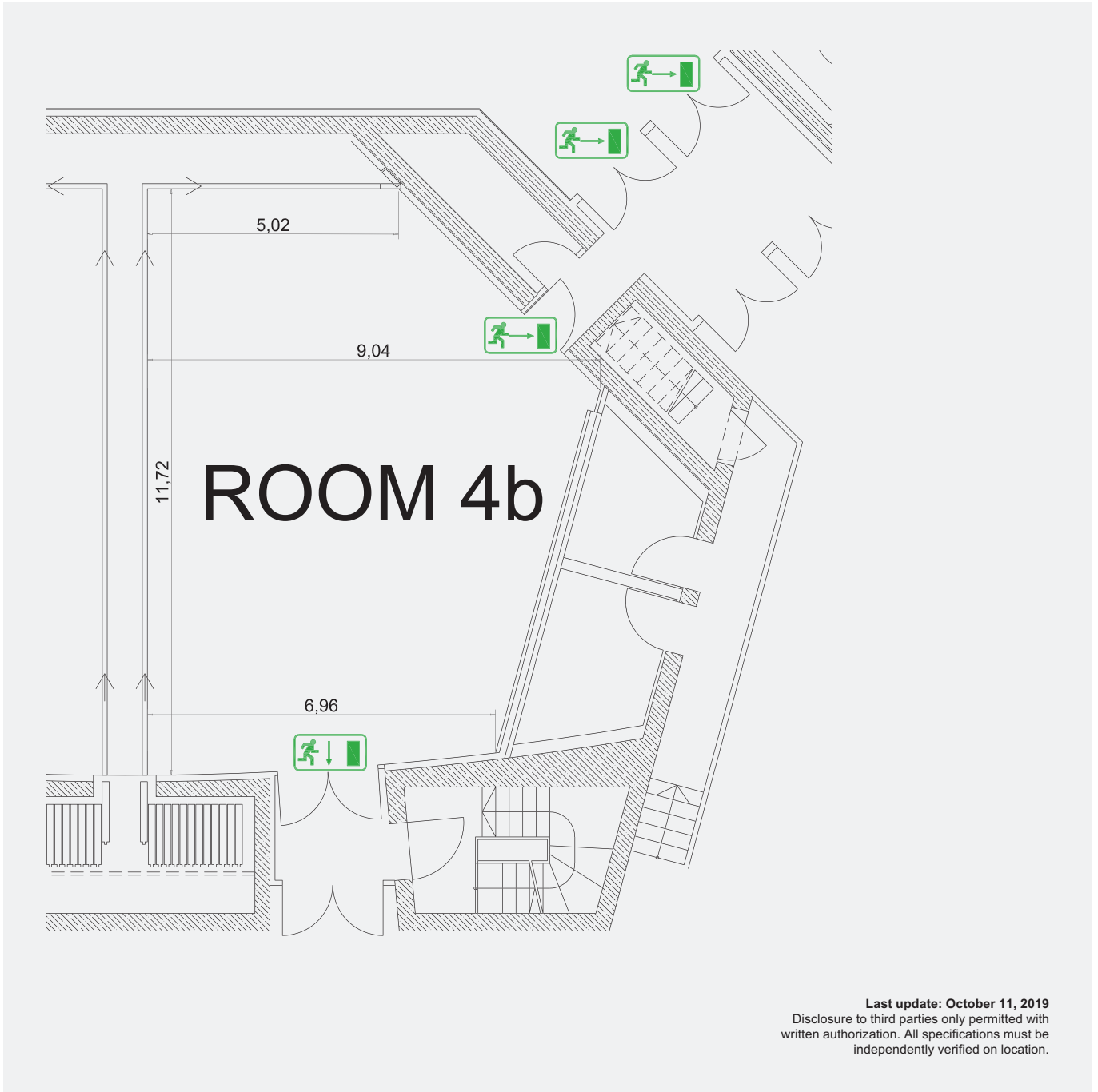
85

 Block

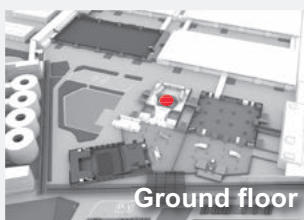
28


ICM – International Congress Center Messe München

ROOM 4b: EMPTY



Last update: October 11, 2019
Disclosure to third parties only permitted with written authorization. All specifications must be independently verified on location.



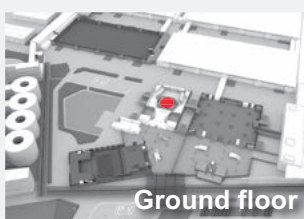
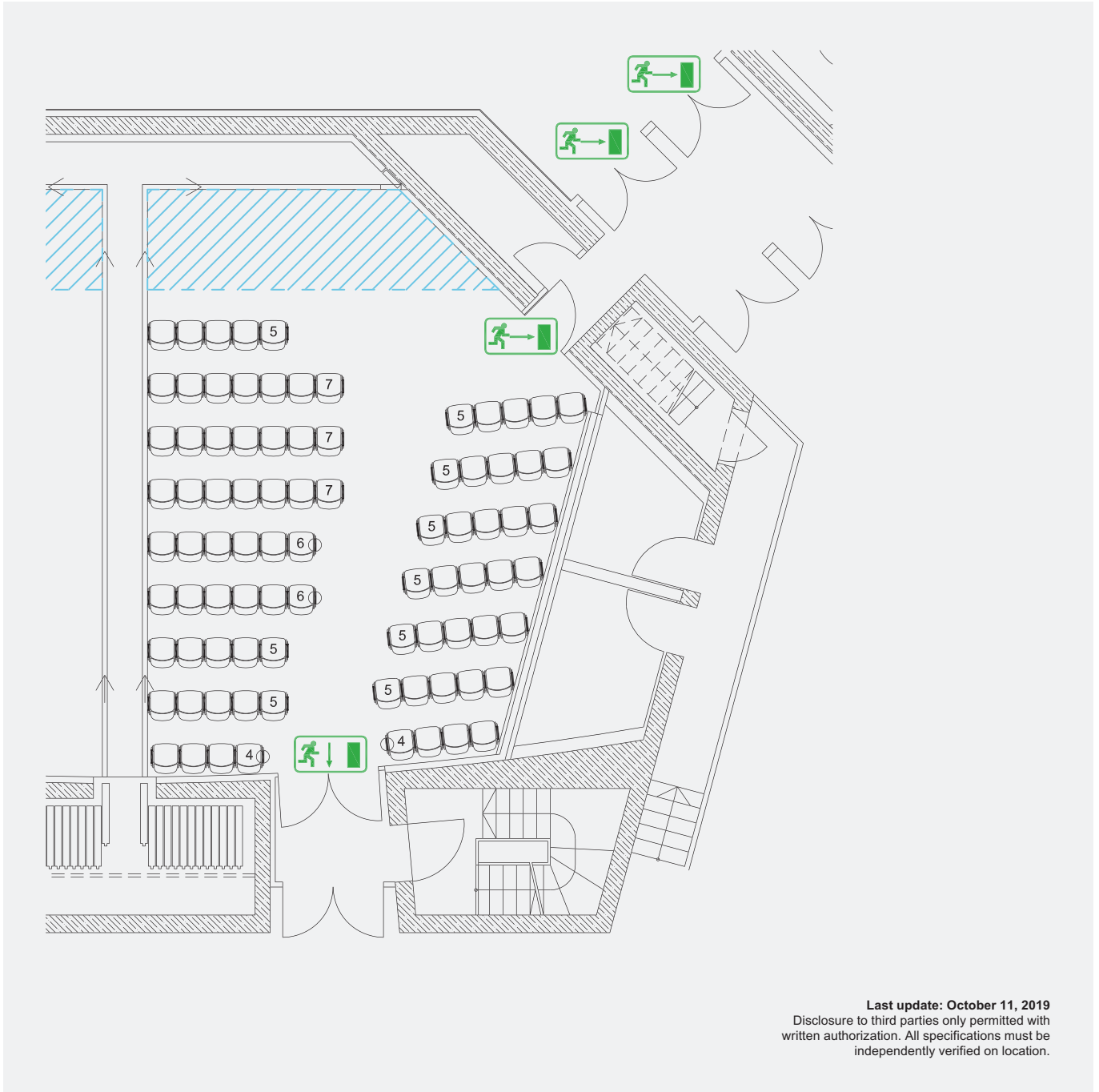
 Escape route


Area in m²

85

ICM – International Congress Center Messe München

ROOM 4b: THEATER SEATING WITH CENTER AISLE



 Escape route

Area in m²

85

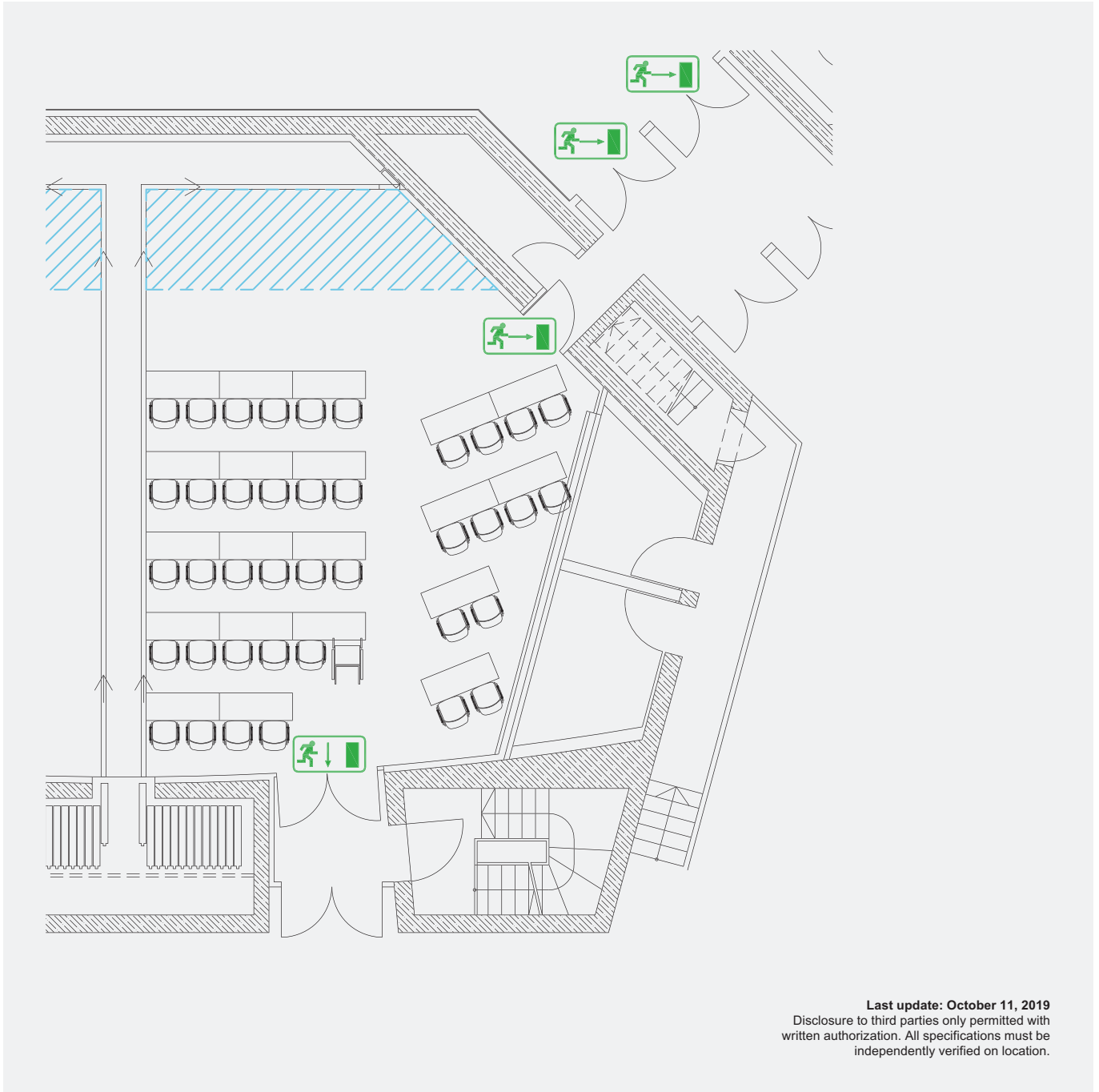


Theater

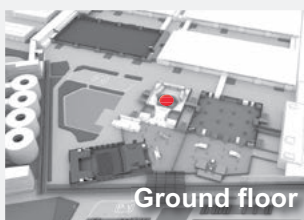
86

ICM – International Congress Center Messe München

ROOM 4b: CLASSROOM SEATING



Last update: October 11, 2019
Disclosure to third parties only permitted with written authorization. All specifications must be independently verified on location.



 Escape route

Area in m²

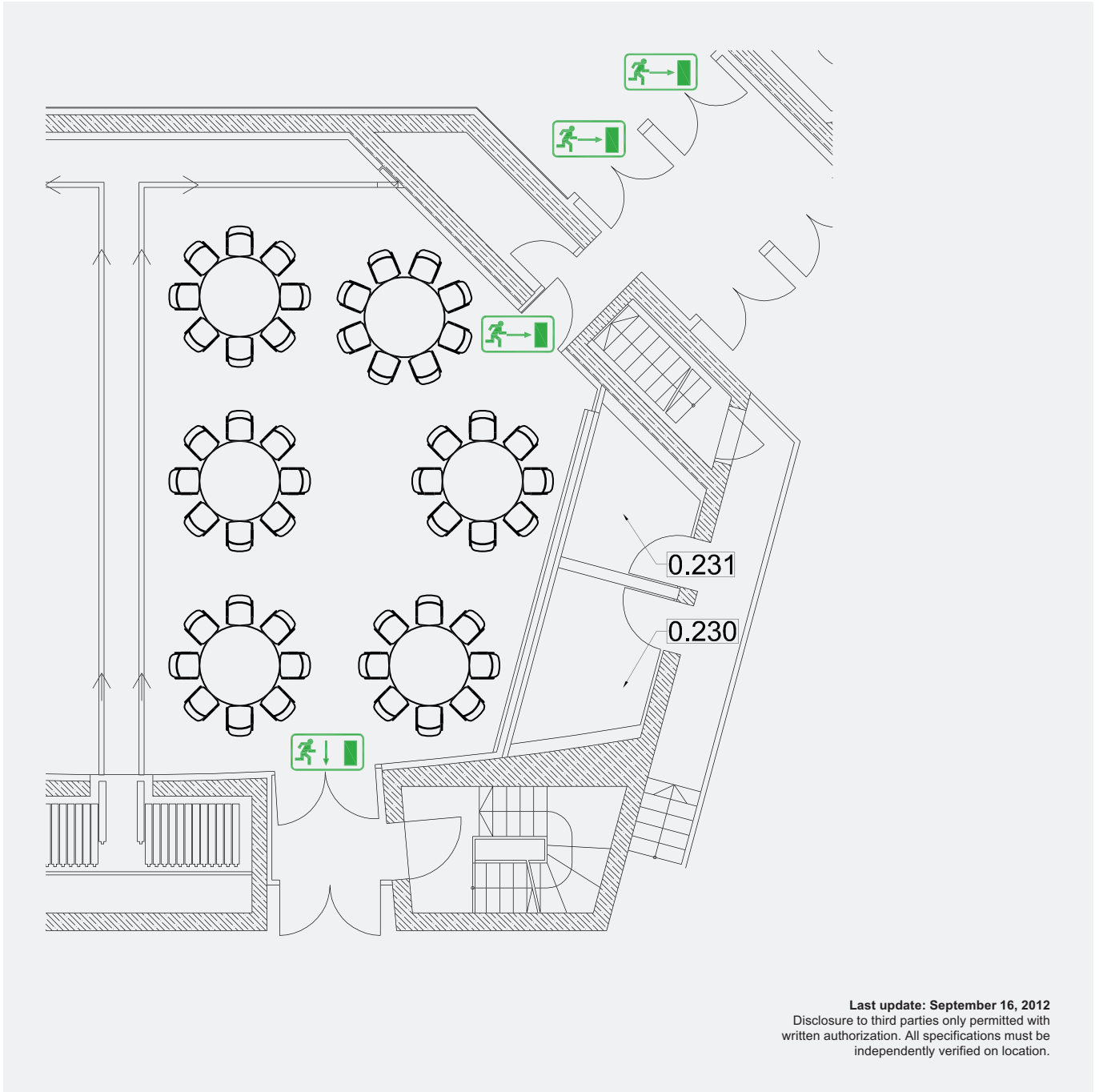
85

 Classroom

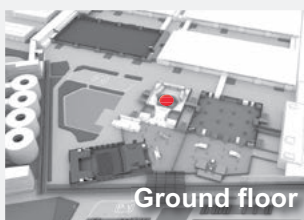
40

ICM – International Congress Center Messe München

ROOM 4b: BANQUET SEATING



Last update: September 16, 2012
Disclosure to third parties only permitted with written authorization. All specifications must be independently verified on location.



 Escape route

Area in m²

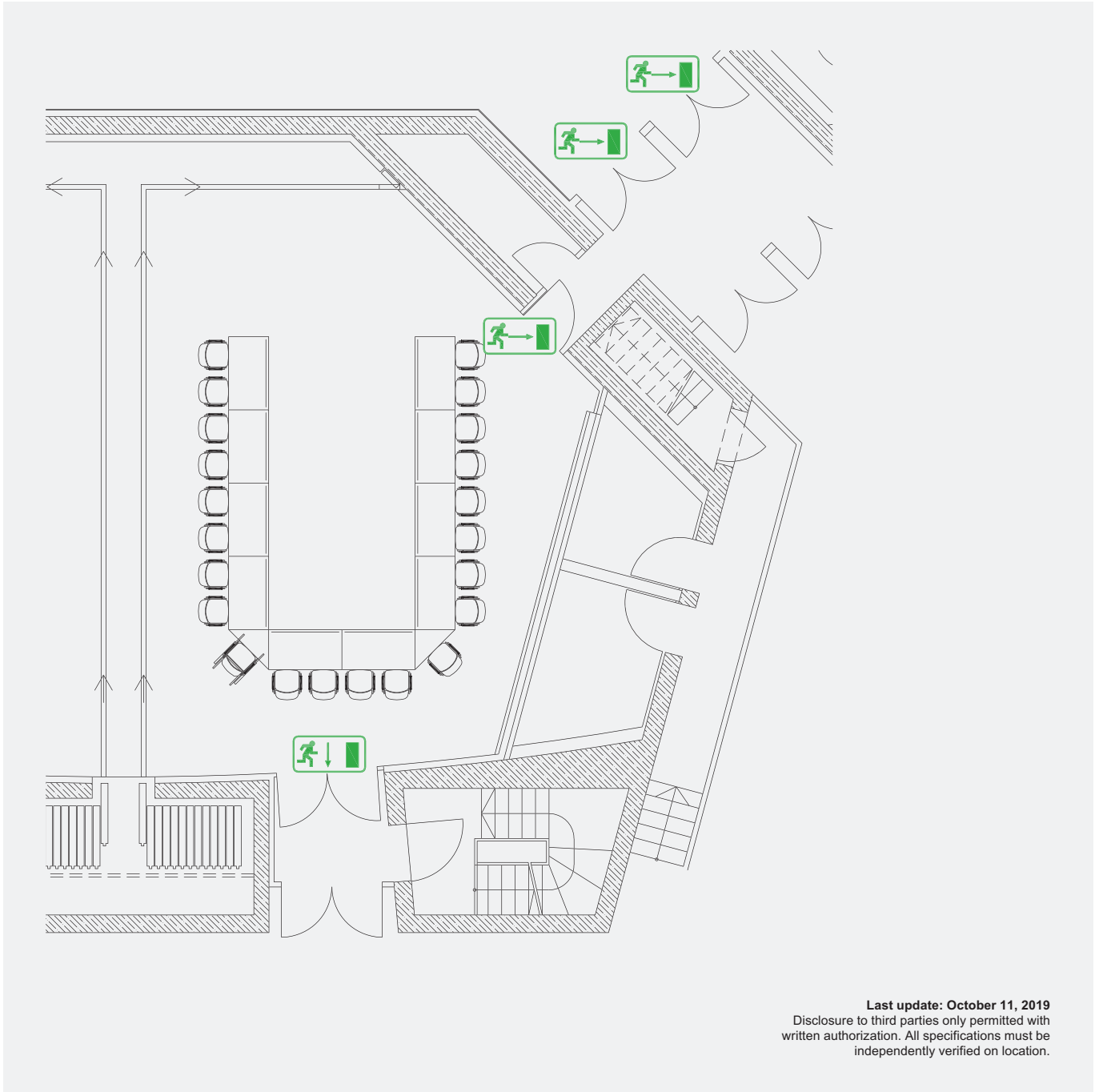
85

 Banquet

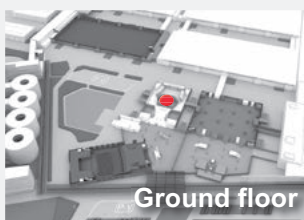
48

ICM – International Congress Center Messe München

ROOM 4b: U-SHAPED SEATING



Last update: October 11, 2019
Disclosure to third parties only permitted with written authorization. All specifications must be independently verified on location.



Ground floor



Escape route

Area in m²

85

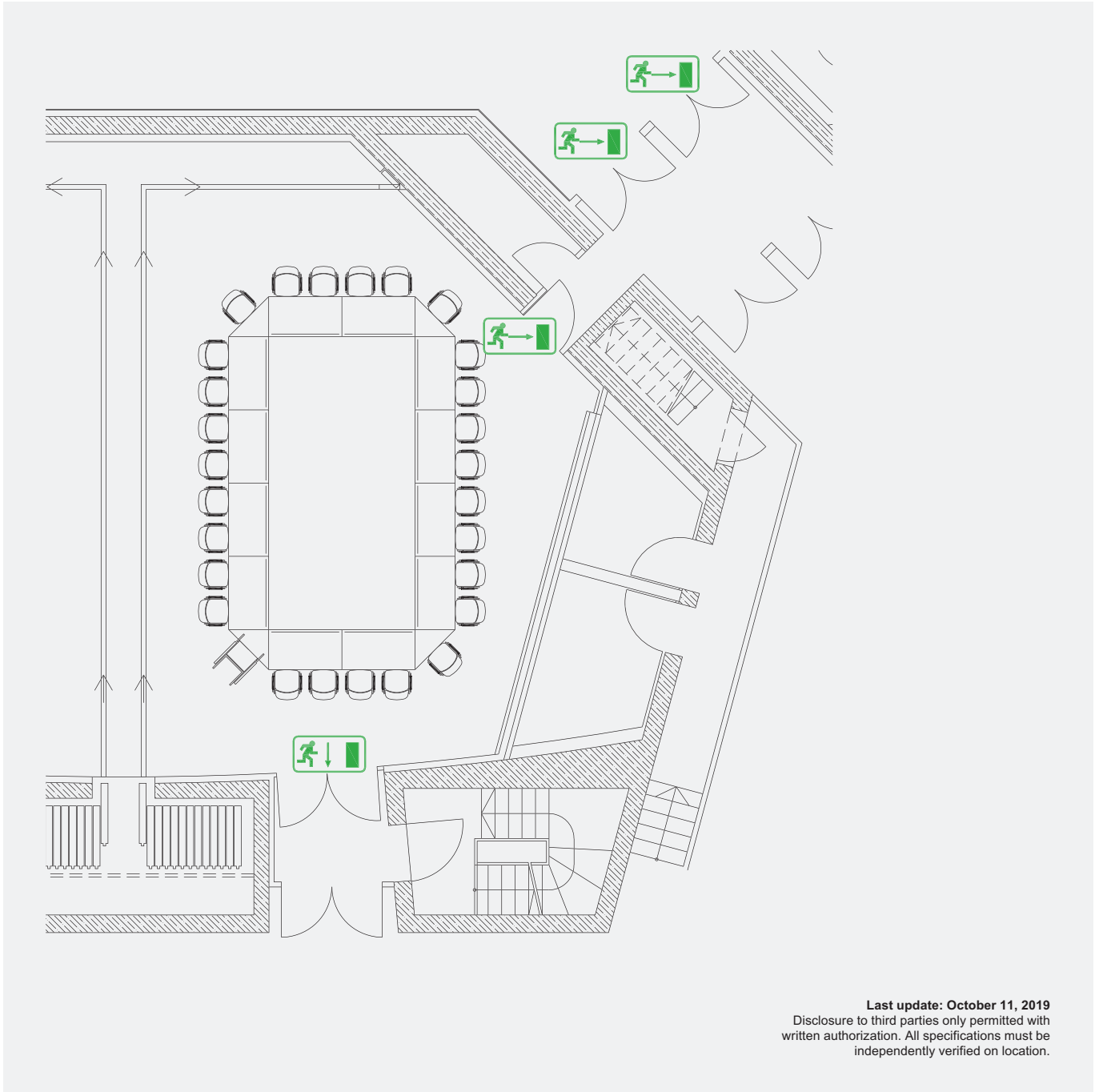


U-shaped

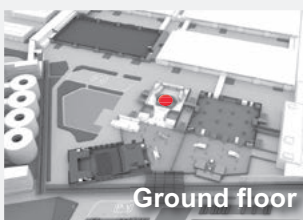
22

ICM – International Congress Center Messe München


ROOM 4b: BLOCK SEATING



Last update: October 11, 2019
Disclosure to third parties only permitted with written authorization. All specifications must be independently verified on location.



Ground floor

 Escape route

Area in m²

85

 Block

28