



KUNSTSTOF  
PROFIELEN

THE  
ART  
OF  
PER  
FEC  
TION



TABLE OF CONTENTS	ABOUT US	3
	WHAT MAKES US DIFFERENT	4
	WHY USE PLASTIC PROFILES	6
	MATERIALS AND PROFILES	8
	DESIGNING YOUR OPTIMUM PROFILE	10
	PROFILE QUESTIONS	11
	SOLUTIONS	11
	MOULD CONSTRUCTION	12
	PRODUCTION	13
	DIVISIONS	14
	CF KUNSTSTOFFPROFIELEN FROM A BIRD'S EYE VIEW	18

# ABOUT US

**CF kunststofprofielen is a modern and versatile company with over 50 years of experience in the plastic profile industry.**

Developing and manufacturing customized plastic profiles is one of the key activities of our company.

Collaboration is vital in developing new customer-specific products, because it is you, our customer, who knows precisely what the application and location demands of the profile.

CF kunststofprofielen has an on-premises warehouse in which we keep a wide variety and a large number of profiles in stock. We have a variety of plastic profiles for windowpanes, door frames, construction sites, and shop interior design in stock. Over two thousand different plastic profiles stand ready for shipping directly from our warehouse.



# WHAT MAKES US DIFFERENT

## Our team **specializes** in customizing your plastic profiles

CF kunststofprofielen is the leading specialist in devising, designing, developing, and manufacturing any profile you require. Our top-quality products are rooted in continuously innovating and investing in our production-quality, gauge constructions, and production capacity.

## From start to finish, everything under **one roof**

At CF kunststofprofielen, we can meet any specific customer's demand. From devising to guiding to manufacturing. All of this entails only one point of contact from start to finish. Due to this, everything under one roof concept, the total processing time to provide you with your customized profile, is remarkably short.

## A **high-tech** mould producer

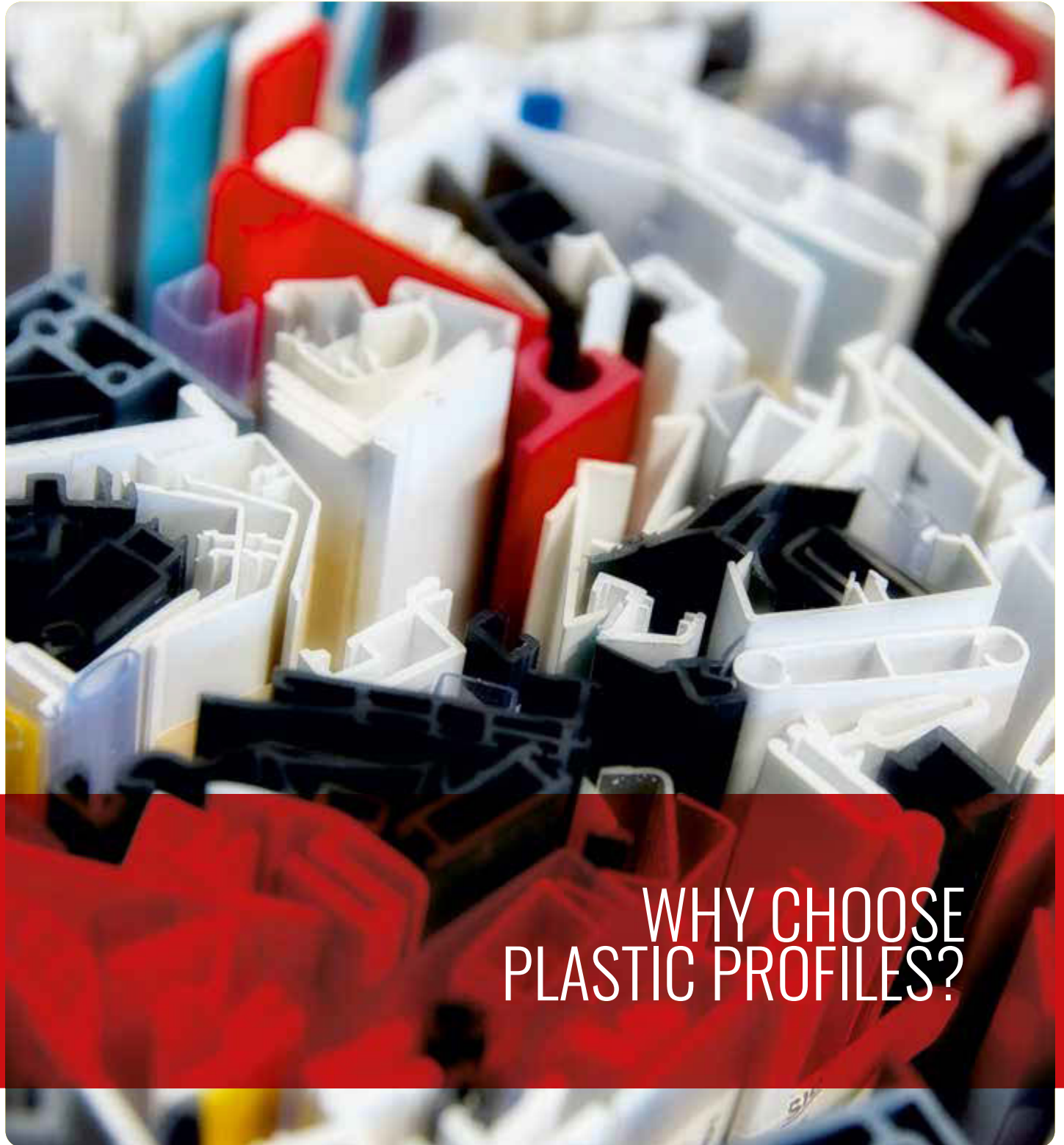
Our technical advantage in the business enables us to produce the moulds in-house. Our ability to produce in-house gives us an edge over our competitors. At CF kunststofprofielen, we average between 4 to 6 weeks from your first visit to the delivery of your product! A distinguishing feature of our company that saves you lots of time and money.





## DIVISIONS

- Construction sites
- Interior construction
- Façade systems
- Technical industries
- Retail and display
- Greenhouse construction



WHY CHOOSE  
PLASTIC PROFILES?



### Plastic profiles are highly cost-efficient

Plastic is often far more economical to use than traditional materials like wood or aluminium, even when the plastic profile is custom-made and delivered on location.

Plastic easily moulds into any desired shape. Combined with the fact that plastic offers a vast array of colours results in the multifunctional use of plastics in constructions. There is hardly any limit to the use of plastic as a building material.



### Sustainable

CF kunststofprofielen is acutely aware of the environment and ensures that our production processes are well balanced between People, Planet, and Profit (PPP), thus ensuring better results for our company while benefiting our society and environment.

Our continuous strive to make our production processes more efficiently, saving on energy, and minimizing the use of raw materials, are the major cornerstones of our philosophy.

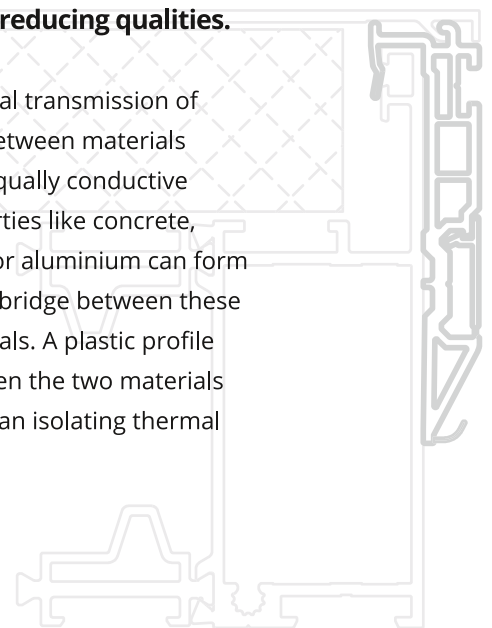
Plastic profiles are incredibly durable; they have a long life-span and hardly require maintenance. The materials can be reused, recycled, or transformed into new forms of energy, an essential value to our circular economy.



### Good insulating properties

Most plastics have high insulating capacities against both heat and cold. On top of the temperature, insulation plastics also offer excellent noise reducing qualities.

Thermal transmission of cold between materials with equally conductive properties like concrete, steel, or aluminium can form a cold bridge between these materials. A plastic profile between the two materials forms an isolating thermal break.



# MATERIALS AND PROFILES



**Every profile, in combination with its application, demands different material characteristics. At CF kunststoffprofilen, we have suitable raw materials and the knowhow to ensure that we can design and manufacture the optimum solution for your project.**

Our specialists are knowledgeable about the specific traits of the various plastics; this is how we assure finding a proficient solution in line with your requirements, every time.

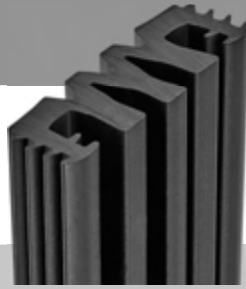




## H-PVC profiles

### Applications

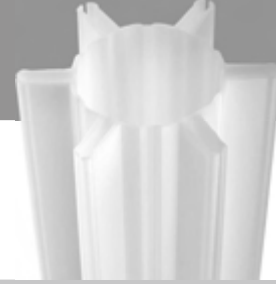
- Construction
- Greenhouse construction
- Shop interior design
- Cable tray systems
- Ventilation systems



## Z-PVC profiles

### Applications

- Shipbuilding
- Construction
- Medical industry
- Horticulture and irrigation
- Flooring



## ABS profiles

### Applications

- Filter systems
- Automotive industry
- Refrigerators and freezers
- Ventilation systems



## PP profiles

### Applications

- Sun-shading industry
- Automotive industry
- Packaging industry



## PC profiles

### Applications

- Lighting industry
- Advertising and display industry
- Automotive industry
- Aviation industry
- Swimming pool covers
- Cable systems



## PMMA profiles

### Applications

- Lighting industry
- Advertising and display industry
- Automotive industry
- Shop interior design



## ASA profiles

### Applications

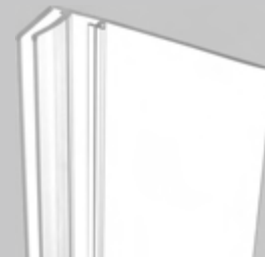
- Greenhouse construction
- Construction
- Solar panels
- Ventilation systems
- Garden furniture
- Advertising signs



## TPU profiles

### Applications

- Construction site, seals and gaskets



## PET-G profiles

### Applications

- Food industry
- Construction
- Advertising signs
- Retail and display
- Medical industry

# THE WAY TO YOUR OPTIMAL PLASTIC PROFILE

**At CF kunststofprofielen, we handle the entire process to produce your customized profile.**

We have the expertise to devise, design, and manufacture any required profile, just the way you need it. We are the one-stop-shop that takes care of your plastic profile business.



# PROFILE REQUEST

**Developing customized profiles is a fundamental part of our production process.**

Collaborating with our customers is essential to develop a new product. Only our customer knows the application and circumstances of how and where the profile will be located and used.



## THE SOLUTION

**At CF kunststofprofielen, we employ a team of specialists consisting of technical draftsman and tool constructors.**

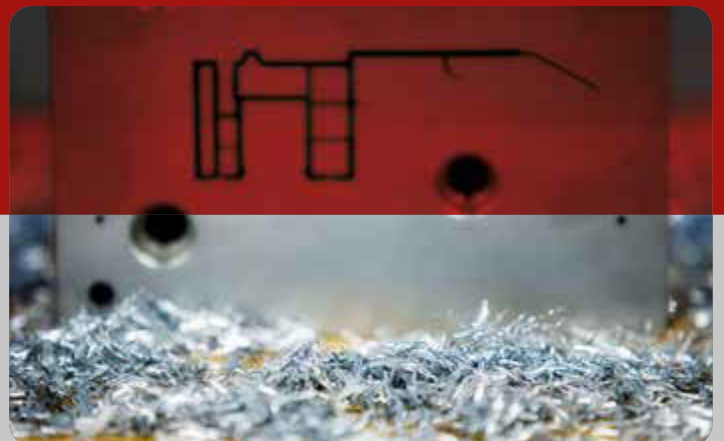
Together with our customers, we formulate the best option for the required profile. From the project's start to finish, we focus on flexibility, contributing ideas, and we are devoted to coming up with solutions.



**Our construction desk makes use of the latest CAD-CAM programs to produce the technical drawings and assures the delivery of the software to the tool shop.**

In the well-equipped tool shop, our specialists use modern CNC controlled machines to produce high-quality moulds and gauges.

The overall quality of your plastic profile is eventually determined by experience and craftsmanship. After your approval, we start with the production of your profiles.



## MANUFACTURING THE MOULD



# PRODUCTION

**Our ultra-modern machinery, in combination with our skilled crew, warrants a high-quality product at a competitive price level.**

Today's consumers frequently ask for a product that is completely finished before the final installation takes place. We have several options to upgrade the basic plastic with unique post-processing methods.





# DIVISIONS

CF KUNSTSTOFFPROFIELEN PRODUCES PLASTIC PROFILES FOR  
THE FOLLOWING EUROPEAN INDUSTRIES



## Construction

The construction industry in Europe consumes approximately 10 million tons of plastics per year. With that amount, this industry definitely is a major consumer; yet, the construction industry is topped by the packaging industry.

Although the use of plastics is not always visible in the construction industry, the amount of applications is ever on the rise. With over 2000 different profiles in stock, CF kunststofprofielen can claim to be the specialist partner for the construction industry.

### Applications

- Plastic or aluminium window frames
- Prefab constructions
- Unit construction
- Conservatory and greenhouse constructions
- Agricultural constructions
- Concrete elements



## Interior construction

Customization and supreme finishing are crucial in the interior construction business.

Our plastic profiles are custom made with the highest achievable quality standard, thus ensuring the demanded supreme finishing.

At CF kunststofprofielen, we pay attention to the nitty-gritty details which we manage to accomplish with our flexible and solution-oriented approach this warrants our interior construction customers to receive the highest possible quality and excellent service.

### Applications

- Dividing walls
- Ceiling systems
- Caravan construction
- Ships interior constructions
- Furniture industry



## Façade systems

Façade systems are the main component determining the durability and the appeal of office buildings, schools, showrooms, and residential constructions.

The top tier façade systems suppliers process our plastic profiles in Europe. For them, too, it is our flexible and customer-focused approach that convinces them to choose CF kunststofprofielen as their partner.

### Applications

- Sun-blinds and awnings
- Screens
- Ventilation
- Rolling shutters
- Glass industry
- Façade cladding
- Divisions



# DIVISIONS

CF KUNSTSTOFFPROFIELEN PRODUCES PLASTIC PROFILES FOR  
THE FOLLOWING EUROPEAN INDUSTRIES





## Technical industry

**The technical industry distinguishes itself by rapid innovations and fast-paced developments in eco-friendly and sustainable production methods.**

CF kunststofprofielen in the past already proved to be a dependable partner for those customers who are focused on innovation and sustainability. We are with you all the way, and we know that it is crucial for you that we take our responsibility during the development of your customized profile.

### Applications

- Isolating systems
- System doors
- Packaging industry
- Solar-energy market
- Climate control systems
- LED lighting systems



## Greenhouse construction

**another business branch that has seen expansive growth over the past years is the greenhouse horticulture sector.**

Entrepreneurs in this industry are, therefore, forced to invest in innovative solutions to safeguard a sustainable and cost-effective production process. On top of that, they need to minimize the footprint of the machinery and maximize the use of every square foot.

CF kunststofprofielen is the proven right partner for the greenhouse horticulture industry. We know how to develop innovative and cost-reducing plastic profiles for a wide range of applications.

### Applications

- Glass decking systems
- Foil decking systems
- Solar mounting systems
- Grower systems



## Retail and display

**Within retail developments rapidly follow one another. The rapidly changing market makes it of the utmost importance that our customers can follow the market's demands promptly.**

The rapid changes required CF kunststofprofielen to make it one of our company's cornerstones to devise and develop new customized moulds and gauges rapidly. By doing so, we keep the production and delivery time for new profiles to a minimum, allowing our retail customers to benefit from this within their markets.

### Applications

- Store interior design
- Stand construction
- Advertising industry

# CF KUNSTSTOFFPROFIELEN FROM A BIRD'S EYEVIEW



**31.000 M<sup>2</sup>**

PRODUCTION FLOOR AND  
WAREHOUSE CAPACITY

**38**

MODERN  
EXTRUSION LINES

**170**

EMPLOYEES

## EXTRUSION

HARD AND SOFT PLASTICS,  
AS WELL AS CO-EXTRUSION  
AND TRI-EXTRUSION

## MATERIALS

HARD-PVC, SOFT-PVC, ABS, PP,  
PC, PMMA, PETG, ASA AND TPU

## PRODUCTION

60 MILLION METERS  
PER YEAR

## HIGH-QUALITY

END PRODUCTS

## RELIABLE

AND FAST  
DELIVERY TIMES

## STOCK

OVER 2000  
DIFFERENT PROFILES

## MECHANICALLY

ADVANCED  
TOOL WORKSHOP

## BROAD

COLOUR  
RANGE



**CF kunststofprofielen**

*Member of C.F. Kunststoffen B.V.*

*Post address*

Postbus 1  
NL 7783 ZG  
Gramsbergen

*Address*

Doorbraakweg 45  
NL 7783 DC  
Gramsbergen

*Phone*

+31(0)524 56 17 08

*Fax*

+31(0)524 56 14 39

*E-mail*

[info@cf-kunststofprofielen.nl](mailto:info@cf-kunststofprofielen.nl)

*Website*

[www.cf-kunststofprofielen.eu](http://www.cf-kunststofprofielen.eu)