

# Electric strikes from effeff



Escape-door lock model 352M

  
ASSA ABLOY

Silent and strong escape-door lock

Experience a safer  
and more open world

## Model range 352

### Tested escape-door locking system



Locking systems in escape and rescue routes must meet high requirements.

Locking systems in escape and rescue routes must have certain properties and meet higher requirements due to statutory regulations. These requirements for locking elements in security-sensitive doors are defined in national and European standards. effeff offers tested and approved security electric strikes and escape door locking systems precisely for use in escape and rescue routes.

effeff solutions are designed as an electric additional locking system for use on doors along escape routes.

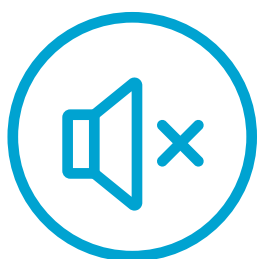
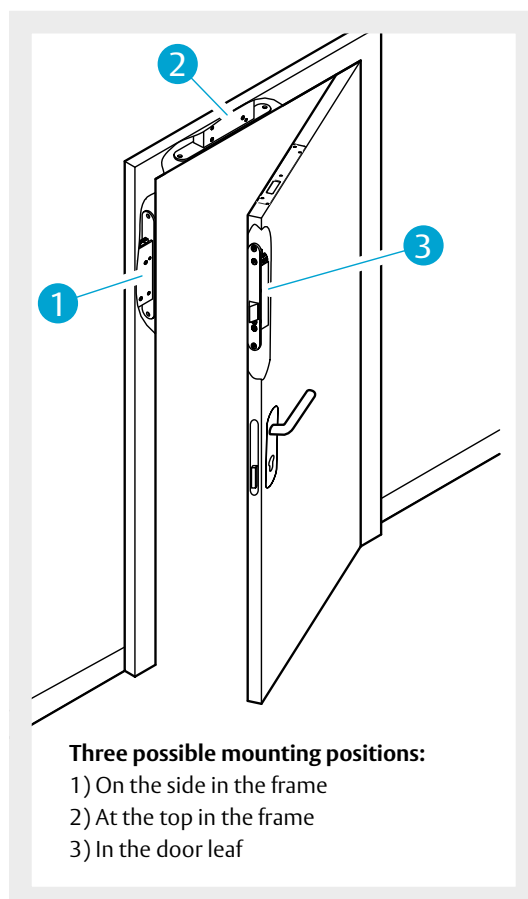
The escape door locking system model 352M is suitable for single action and double acting swing doors and impresses with particularly low operating noise and a very high preload of 5,000 Newtons.

## Model range 352

### Silent and strong escape-door lock

#### Overview of advantages

- Patented escape-door locking system (fail-unlocked)
- Tested and approved in accordance with EltVTR and EN 13637
- For swing doors and double acting swing doors along escape routes
- Installation vertically and horizontally
- Extremely quiet locking and unlocking
- No additional closing pressure needed
- Silent operation with permanent release
- Profile without cut-out = consistent seal layer: improved sound and heat insulation values and clear, attractive appearance
- Compatible with 351U and 351M models
- Very high holding force: 5,000 N
- Integrated armature and monitoring contact
- Multi-voltage range from 12 to 24 volts
- Accessories: Surface-mounted casing



#### Particularly quiet

##### The operation of the electric strike is practically silent

The patented escape-door locking system 352M is tested and approved in accordance with EltVTR and EN 13637.

A particular advantage of the escape-door locking system suitable for vertical and horizontal installation is the drive concept: The door leaf detection is carried out by a contactless sensor. This prevents wear on the door and minimises operating noises – the 352M locks and unlocks particularly quietly. Furthermore, no additional closing force is required for closing. Also the permanent release works silently.



#### High holding force

##### The model offers an holding force of 5,000 Newtons

The motor-driven bolt and its counterpart enable a continuous, standardised profile contour. This maintains a consistent seal layer on the door, which improves sound and heat insulation values and enables a clear, attractive appearance. Thanks to identical installation dimensions, the 352M is compatible with the 351U model and has a very high holding force of 5,000 Newtons. Armature and monitoring contact are integrated. The fail-unlocked locking system is available with a multi-voltage range of 12 to 24 V DC. The product range also includes suitable accessories such as a surface-mounted housing.

## Model range 352

### High security building section door

#### Entrance solution for very high security requirements

The building section door (resistance class RC3/RC4) is secured with a handle-controlled multi-point locking system. The self-locking panic lock fulfils the requirements for intrusion-resistant doors, fire doors and emergency exit doors in accordance with EN 179. A resistance class of RC4 can be achieved in suitable systems.

Prerequisite: The door manufacturer has passed the prescribed test with the doors and locks for approval according to resistance class RC4.

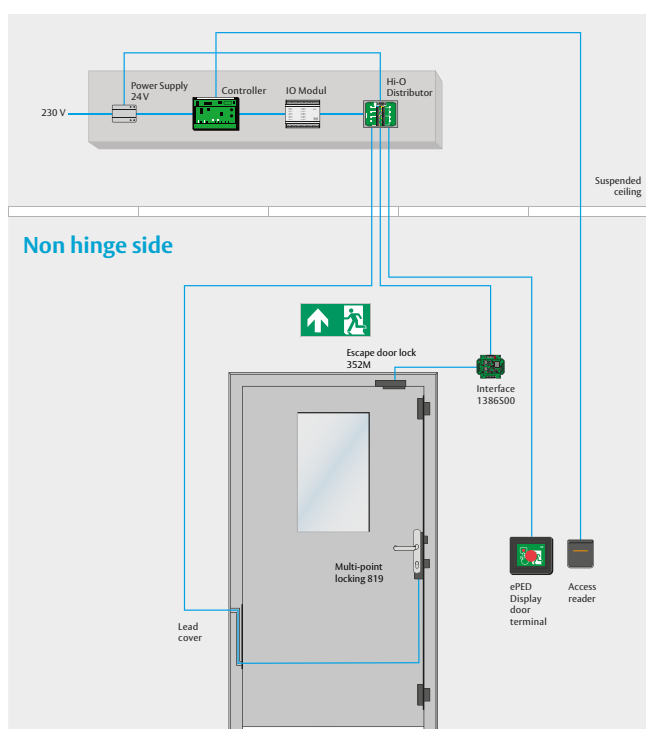
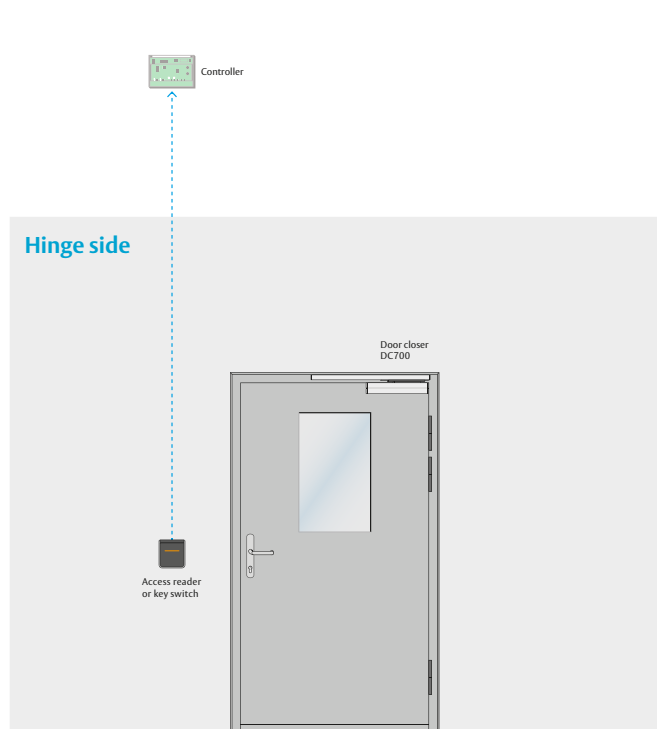
The door can be released at any time from inside the building using the emergency button. Escape via the section door is therefore always possible. An audible

and visual alarm is also triggered immediately at the same time.

Authorised access from outside (against the escape direction) takes place via the card reader of an access control system that engages the outside handle.

Authorised access is granted from the office side (escape side) via the card reader or by entering a PIN on the display door terminal.

For connecting a fire alarm system / burglar alarm system several inputs and outputs are available via the I/O module. If the fire alarm system is activated, the escape door locking device is released in emergency mode and an alarm sounds.



#### The components:

- ePED® display terminal 24V DC 1386D10
- ePED® interface for locking system 1386S00
- Multi-point locking system 819N
- Escape-door locking system with strike plate 352M.80
- Power supply 24V DC 1003-24
- Key switch outside 1140-1x or access control reader/system on-site
- Lead cover pluggable 10314-10
- ePED® I/O module 901-IO-20
- ePED® distributor 901-HUB
- Guide rail door closer DC 700
- Security fitting

## Model range 352

### Side entrance to the stairwell

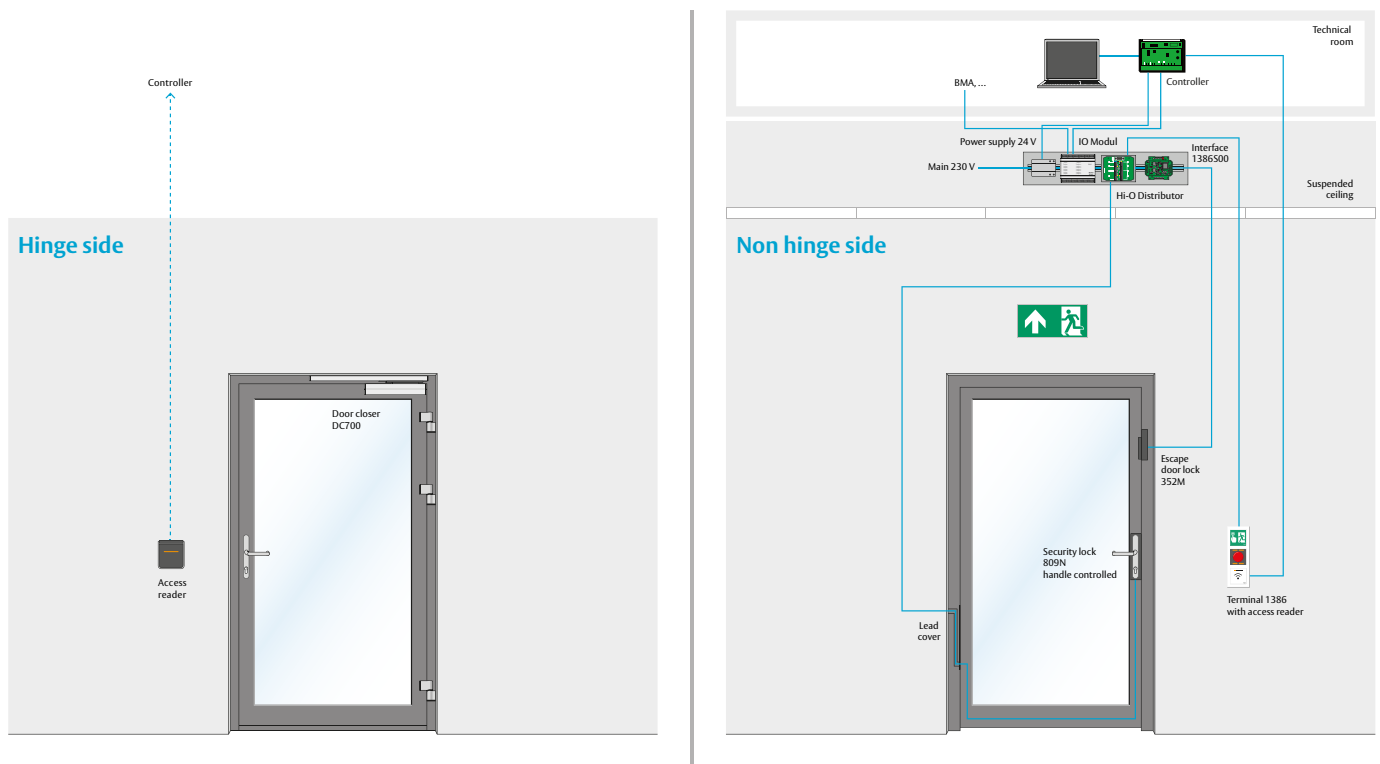
#### Controlled escape route at the side entrance

A single-leaf side entrance to the escape stairwell is required in a hotel. The building extends over several floors. The door is locked and monitored in normal operating mode.

The door is additionally locked with an escape door locking system so that unauthorised persons can not misuse the door. Access from the outside is via the access control. From the inside, the authorised exit takes place via the access control in the terminal. The door can be released permanently as an option.

In an emergency, anyone can press the emergency button and release the door. An alarm is always triggered in the process.

The top door closer ensures automatic closing and thus also protection against unauthorised entry. Cam-Motion® technology also ensures easy access with a rapidly decreasing opening torque: The opening force required to open the door remains below the forces required for barrier-free construction in DIN 18040.



#### The components:

- Door closer with guide rail (DC700)
- Access control controller
- Access reader outside
- Escape door terminal 1386 with access reader
- Security lock 809NE handle-operated
- Security fitting SK3 H83300
- Power supply 1003-24
- Lead cover 10314-14
- IO module 901-IO-20
- Hi-O distributor 901-HUB
- Interface 1386S00 VT
- Escape-door locking system 352M.80

## Model range 352

### Main entrance door nursery school

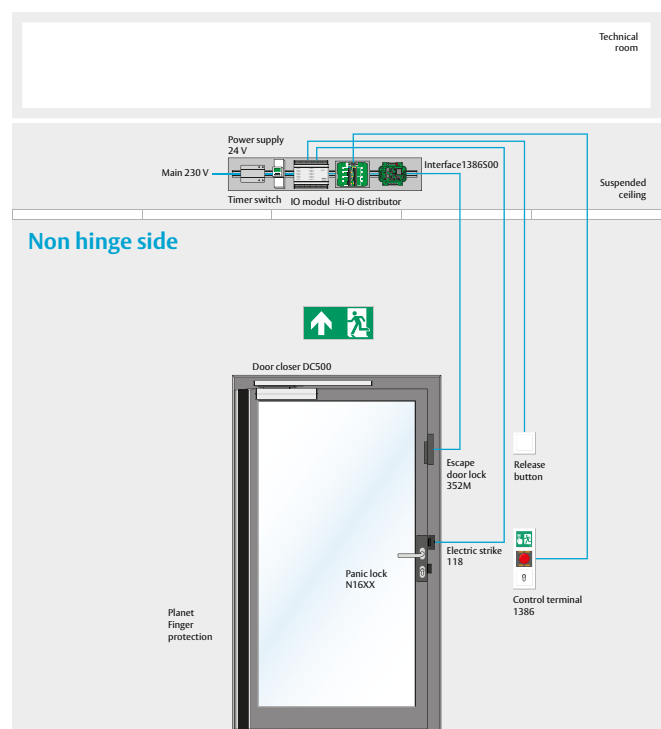
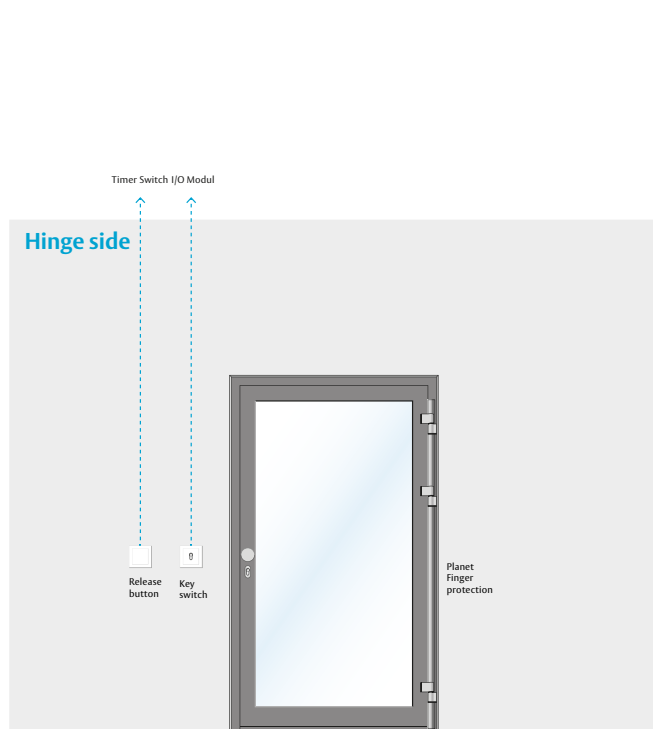
#### Secure entrance door to nursery schools

During daytime operation, the entrance door to the nursery school is additionally locked by an electric locking element (escape door strike) so that children cannot leave the nursery unattended and suddenly end up standing on the street.

In an emergency, the children can quickly get outside using the emergency button in the control terminal without the help of another person: the escape route/rescue route is open to them. An audible and visual alarm is also triggered at the same time.

Parents expect free access to nursery during pick-up and drop-off times.

The door is authorized for use from the inside using a release button, which is installed at a height of about 1.80 m and therefore cannot be reached by children. A release button is also installed for authorised access to the door from the outside, which is activated via a timer only at the pick-up and delivery times. Outside these hours, entry can be gained using the outside key switch.



#### The components:

- Control terminal 1386
- Escape-door locking system 352M.80
- Release button inside 1011
- Release button outside 1012
- Strike 11805, 24V
- Standard panic lock N16XX
- External key switch 1140-1X
- Switching timer 2032-10
- Interface 1386S00 VT
- ePED® I/O module 901-IO-20
- ePED® distributor 901-HUB
- Planet finger protection

## Model range 352

### Main entrance door nursery school, automated

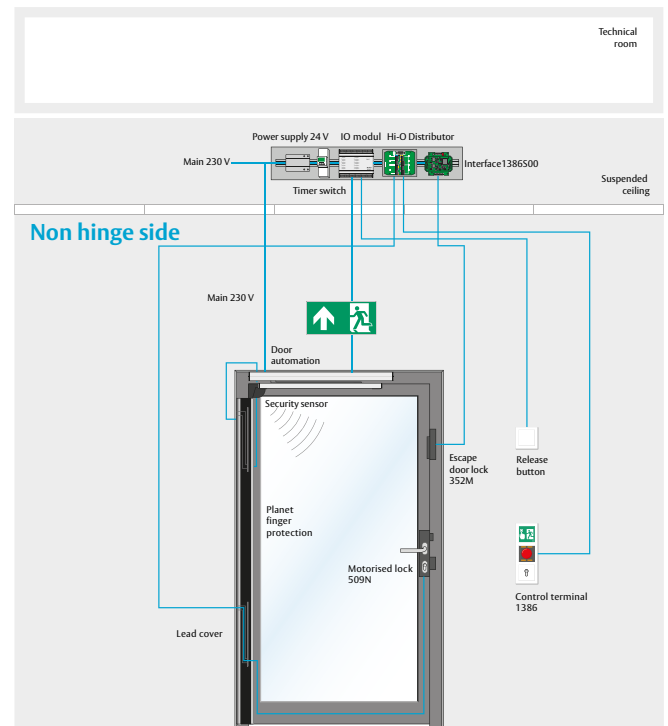
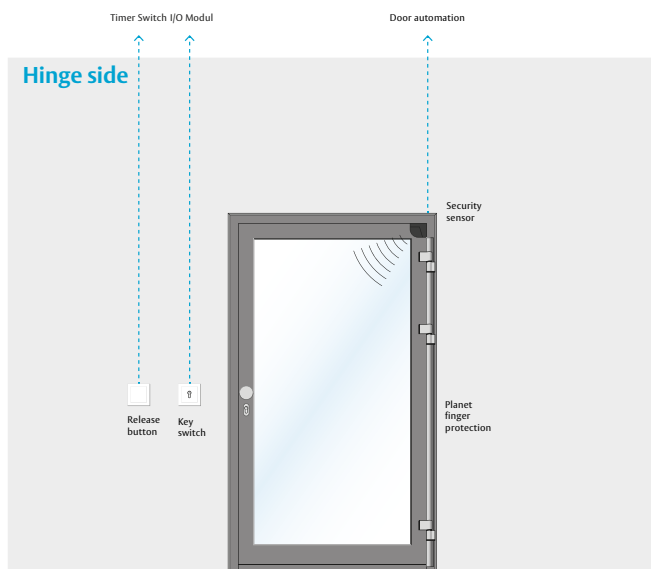
#### Safety and automatic opening on the nursery door

During daytime operation, the entrance door to the nursery school is additionally locked by an electric locking element (escape door strike) so that children cannot leave the nursery unattended and suddenly end up standing on the street.

In an emergency, the children can quickly get outside using the emergency button in the control terminal without the help of another person: the escape route/rescue route is open to them. An audible and optical alarm is also triggered at the same time. Parents expect free access to nursery during pick-up

and drop-off times. For greater accessibility, the door should also open automatically.

The door is authorized for use from the inside using a release button, which is installed at a height of about 1.80 m and therefore cannot be reached by children. A release button is also installed for authorised access to the door from the outside, which is activated via a timer only at the pick-up and delivery times. Outside these hours, entry can be gained using the outside key switch. Authorised access activates the swing door operator, which automatically opens the door.



#### The components:

- Control terminal 1386
- Swing door operator with safety sensors on site
- Motorised lock 509N
- Lead cover 10314-14
- Power supply 1003-24-4---20
- Escape-door locking system 352M.80
- Interface 1386S00 VT

- ePED® I/O module 901-IO-20
- ePED® distributor 901-HUB
- Release button inside 1011
- Release button outside 1012
- External key switch 1140-1X
- Switching timer 2032-10
- Planet finger protection

#### Further door solutions and information

on the products can be found at: [www.effeff.de](http://www.effeff.de)



## Model range 352

### Locking for swing doors and double-action swing doors

#### Escape door locking system model 352M

Version with strike plate, counterpart and spacer plates

#### The advantages at a glance

- Very quiet locking and unlocking, silent during permanent release
  - The 352M escape-door locking system is especially designed as an additional locking system to secure doors along escape routes
  - Suitable as an additional locking element for installation in fire doors
  - Example for further usage options: double action swing door, revolving doors, interlocking doors, special doors
  - Universal installation position, vertical and horizontal in the door frame or door leaf
  - Holding force of 5000 N
  - Safe unlocking under pre-load of up to 5000 N
  - 12V DC to 24V DC multi-voltage, controlled DC voltage
  - Monitoring contact and armature contact integrated
  - Compatible for installation with models 351U and 351M
- Supply includes round striking plate, round counterpart and 4 round spacer plates



#### Electrical data

Input operating voltage	12-24 V DC $\pm$ 15%
Max. current consumption with motor operation (approx. 2 s) 12 V DC	600 mA
Max. current consumption with motor operation (approx. 2 s) 24 V DC	290 mA
Current consumption in continuous operation (locked) 12 V DC	360 mA
Current consumption in continuous operation (locked) 24 V DC	190 mA

#### Characteristics

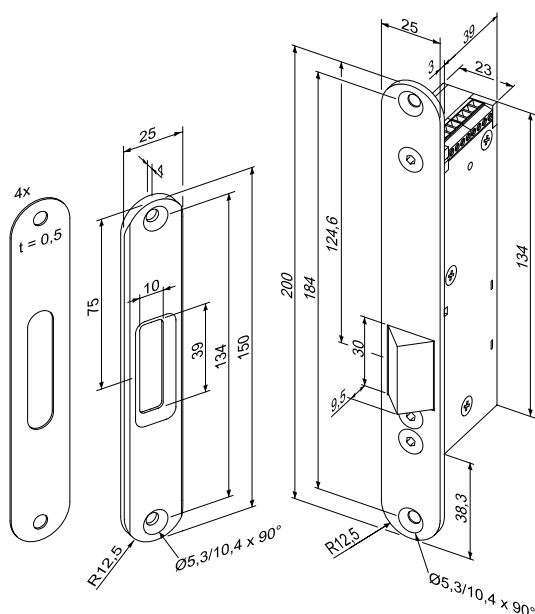
Monitoring contact (RR)	•
Diode (05)	•
Armature monitoring contact	•
Fail-unlocked	•

#### Technical attributes

Max. pre-load	5000 N
Break-in resistance	5000 N
Operating temperature range	-15 °C to +50 °C
Installation position	Vertical and horizontal
Length	200 mm
Width	25 mm
Depth	42 mm
Armature contact	Yes
DIN-direction	Universal
Material bolt	Steel
Approvals	EltVTR EN 13637

#### Order no.

**352M.80-----Q91**





## Model range 352

### Locking for swing doors and double-action swing doors



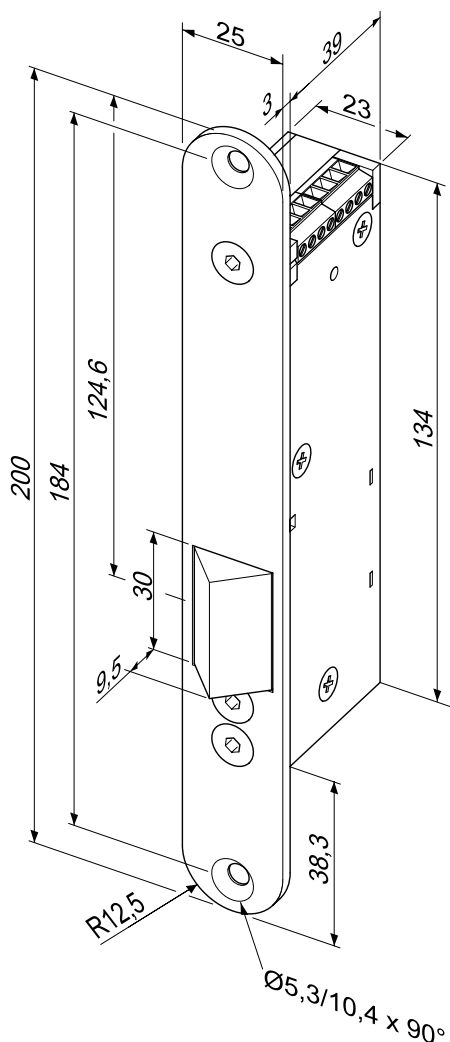
#### Escape door locking system model 352M

Version with strike plate, without counterpart or spacer plates

Suitable for combination with counterpart SET352E-25---00 (VarioFix) or SET352R-25---00

#### The advantages at a glance

- Very quiet locking and unlocking, silent during permanent release
  - The 352M escape-door locking system is especially designed as an additional locking system to secure doors along escape routes
  - Suitable as an additional locking element for installation in fire doors
  - Example for further usage options: double action swing door, revolving doors, interlocking doors, special doors
  - Universal installation position, vertical and horizontal in the door frame or door leaf
  - Holding force of 5000 N
  - Safe unlocking under pre-load of up to 5000 N
  - 12V DC to 24V DC multi-voltage, controlled DC voltage
  - Monitoring contact and armature contact integrated
  - Compatible for installation with models 351U and 351M
- Supply includes round striking plate, without counterpart and spacer plates



#### Electrical data

Input operating voltage	12-24 V DC $\pm$ 15%
Max. current consumption with motor operation (approx. 2 s) 12 V DC	600 mA
Max. current consumption with motor operation (approx. 2 s) 24 V DC	290 mA
Current consumption in continuous operation (locked) 12 V DC	360 mA
Current consumption in continuous operation (locked) 24 V DC	190 mA

#### Characteristics

Monitoring contact (RR)	•
Diode (05)	•
Armature monitoring contact	•
Fail-unlocked	•

#### Technical attributes

Max. pre-load	5000 N
Break-in resistance	5000 N
Operating temperature range	-15 °C to +50 °C
Installation position	Vertical and horizontal
Length	200 mm
Width	25 mm
Depth	42 mm
Armature contact	Yes
DIN-direction	Universal
Material bolt	Steel
Approvals	EltVTR / EN 13637

#### Order no.

**352M---34F35Q91**

# Model range 352

## Locking for swing doors and double-action swing doors

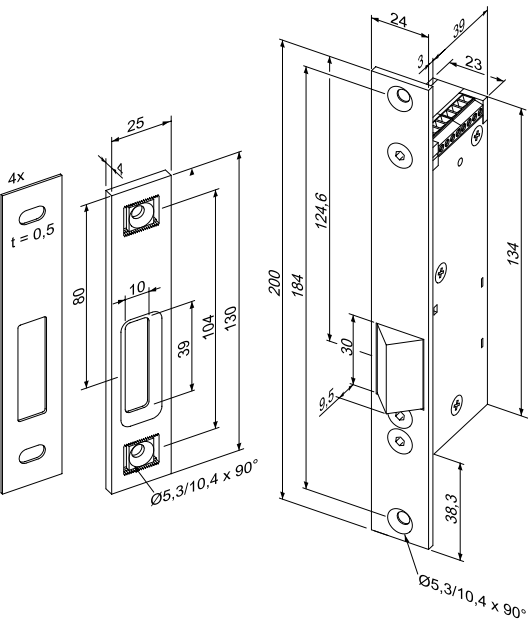


Escape door locking system model 352M  
Version with strike plate, counterpart (VarioFix®) and spacer plates

The advantages at a glance

- Very quiet locking and unlocking, silent during permanent release
- The 352M escape-door locking system is especially designed as an additional locking system to secure doors along escape routes
- Suitable as an additional locking element for installation in fire doors
- Example for further usage options:  
double action swing door, revolving doors, interlocking doors, special doors
- Universal installation position, vertical and horizontal in the door frame or door leaf
- Holding force of 5000 N
- Safe unlocking under pre-load of up to 5000 N
- 12V DC to 24V DC multi-voltage, controlled DC voltage
- Monitoring contact and armature contact integrated
- Compatible for installation with models 351U and 351M
- VarioFix counterpart +/-2mm adjustable
- Supply includes square-cut strike plate, square-cut counterpart (VarioFix®) and 4 square-cut spacer plates

Electrical data	
Input operating voltage	12-24 V DC ± 15%
Max. current consumption with motor operation (approx. 2 s) 12 V DC	600 mA
Max. current consumption with motor operation (approx. 2 s) 24 V DC	290 mA
Current consumption in continuous operation (locked) 12 V DC	360 mA
Current consumption in continuous operation (locked) 24 V DC	190 mA



Characteristics	
Monitoring contact (RR)	•
Diode (05)	•
Armature monitoring contact	•
Fail-unlocked	•

Technical attributes	
Max. pre-load	5000 N
Break-in resistance	5000 N
Operating temperature range	-15 °C to +50 °C
Installation position	Vertical and horizontal
Length	200 mm
Width	25 mm
Depth	42 mm
Armature contact	Yes
DIN-direction	Universal
Material bolt	Steel
Approvals	EltVTR / EN 13637

Order no.  
**352M.85-----Q91**



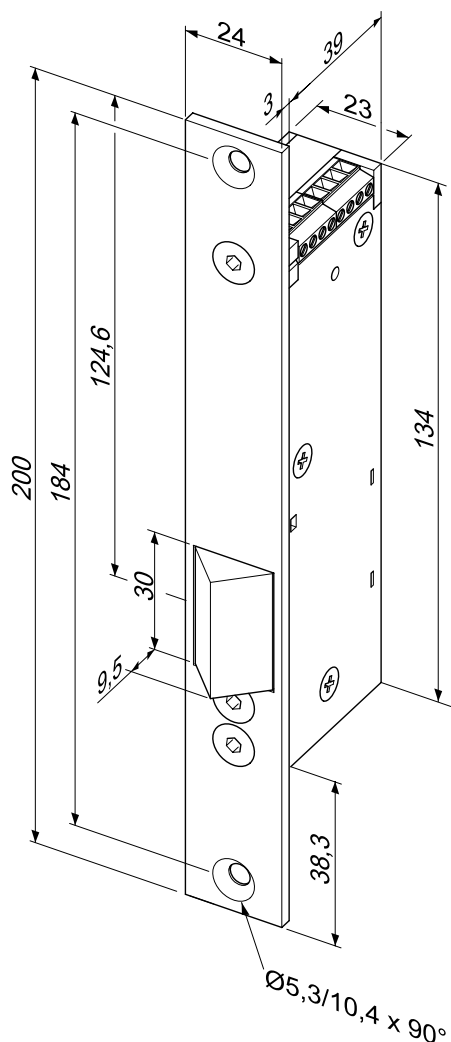
## Escape door locking system model 352M

Version with strike plate, without counterpart or spacer plates

Suitable for combination with counterpart SET352R-25---00 or SET352E-25---00

## The advantages at a glance

- Very quiet locking and unlocking, silent during permanent release
- The 352M escape-door locking system is especially designed as an additional locking system to secure doors along escape routes
- Suitable as an additional locking element for installation in fire doors
- Example for further usage options:  
double action swing door, revolving doors, interlocking doors, special doors
- Universal installation position, vertical and horizontal in the door frame or door leaf
- Holding force of 5000 N
- Safe unlocking under pre-load of up to 5000 N
- 12V DC to 24V DC multi-voltage, controlled DC voltage
- Monitoring contact and armature contact integrated
- Compatible for installation with models 351U and 351M
- Supply includes square-cut striking plate, without counterpart and spacer plates



### Electrical data

Input operating voltage	12-24 V DC $\pm$ 15%
Max. current consumption with motor operation (approx. 2 s) 12 V DC	600 mA
Max. current consumption with motor operation (approx. 2 s) 24 V DC	290 mA
Current consumption in continuous operation (locked) 12 V DC	360 mA
Current consumption in continuous operation (locked) 24 V DC	190 mA

### Characteristics

Monitoring contact (RR)	•
Diode (05)	•
Armature monitoring contact	•
Fail-unlocked	•

### Technical attributes

Max. pre-load	5000 N
Break-in resistance	5000 N
Operating temperature range	-15 °C to +50 °C
Installation position	Vertical and horizontal
Length	200 mm
Width	25 mm
Depth	42 mm
Armature contact	Yes
DIN-direction	Universal
Material bolt	Steel
Approvals	EltVTR / EN 13637

## Order no.

352M---54G35Q91

## Model range 352

### Accessories



#### Counterpart (VarioFix) with spacer plates

Counterpart +/-2mm adjustable, detent 1mm.  
Suitable for e.g. metal door leaves (aluminium, steel).

Technical attributes	
Dimension	130 x 24 x 4 mm
Surface/Material	Stainless steel

#### Order no.

**SET352E-25---00**



#### Spacer plate

Spacer plate 3 mm thickness, suitable for counterpart (VarioFix®)

Technical attributes	
Dimension	130 x 24 x 3 mm
Surface/Material	Stainless steel

#### Order no.

**352E-3-----00**



#### Counterpart with spacer plates

Suitable for e.g. wooden door leaves

Technical attributes	
Dimension	150 x 25 x 4 mm
Surface/Material	Stainless steel

#### Order no.

**SET352R-25---00**



#### Surface mounted housing with VarioFix® adjustment for 352M.80

VarioFix®-adjustability +/-2mm, detent 1mm

Technical attributes	
Dimension	207 x 31 x 44,5 mm
Surface/Material	Stainless steel
Mounting position	Universal

#### Order no.

**-----A1035-01**

## Model range 352

### Accessories



#### Screw-on mounting plates model SET-LA-M5

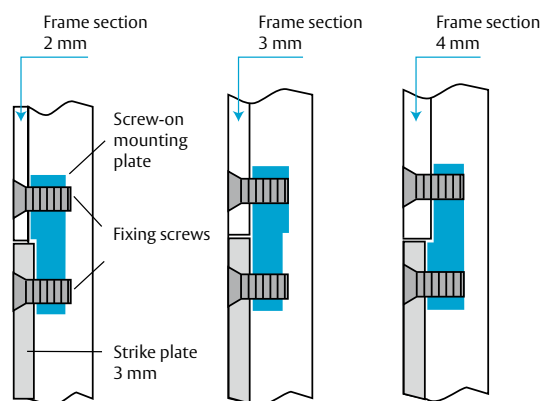
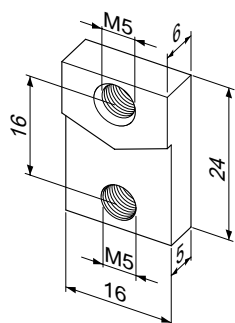
For flush mounting of striking plates especially in steel frames

Order no.

**SET-LA-M5----00**

Scope of delivery:

2 x screw-on mounting plates including 4 x M5x8  
Phillips screws



Installation examples for a 3 mm thick strike plate.  
By turning the screw-on mounting plate, it is possible  
to fasten it in a 2, 3 or 4 mm thick steel frame.

Customer No.:

Sender

Company

Industry

Contact

Phone

Fax

E-Mail

Address / P.O. Box

City / postcode

Date

ASSA ABLOY  
Sicherheitstechnik GmbH  
  
Bildstockstraße 20  
72458 Albstadt  
GERMANY  
Tel. +49 7431 123-700  
export.effeff@assaabloy.com

Article code	Quantity

Quick orders -  
also by e-mail:

As a proven partner for electric strike systems Assa Abloy is well known for their reliable and fast deliveries. Hereby we offer you two methods for ordering: you can fax us the filled form or send us your requests by e-mail to the following address: [export.effeff@assaabloy.de](mailto:export.effeff@assaabloy.de)

Conditions of delivery  
and payment:

The acceptance of the order and the delivery are based on our general terms and conditions. Upon request they could be sent.

On the internet you can find the general terms and conditions: [www.assaabloy.com/de](http://www.assaabloy.com/de)



Also in future we comply with the requirements for further technical development and innovation. That's why we reserve the right for changes in construction. Even illustrations could differ from real products in individual cases.

Despite greatest care printing errors or mistakes could occur. ASSA ABLOY assumes no liability for this and does not enter into a commitment.

All printed safety regulations without engagement.



The ASSA ABLOY Group is the global leader in access solutions. Every day we help people feel safe, secure and experience a more open world.

**ASSA ABLOY**  
Opening Solutions

ASSA ABLOY Sicherheitstechnik GmbH  
Bildstockstraße 20  
72458 Albstadt  
GERMANY  
Tel. +49 7431 123-700  
[albstadt@assaabloy.com](mailto:albstadt@assaabloy.com)  
[www.assaabloy.com/de](http://www.assaabloy.com/de)