

The solution for high-quality powdercoated windows and doors

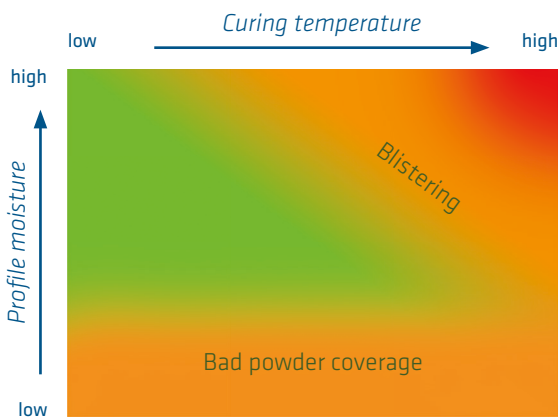
insulbar with ESPOC



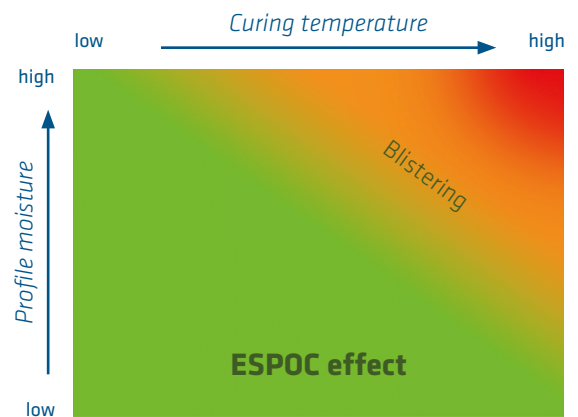
Ensinger has developed ESPOC, a solution that can be applied to insulbar profiles. ESPOC is a thin layer that is applied to both our standard profiles and customised profile designs using an innovative process. The result is an almost perfect powder coating of the profiles in our customers' systems - the ESPOC effect.

Regardless of the moisture content of the profiles treated with ESPOC, the attraction of the powder remains at a constantly high level during the coating process. An optimum coating result can be achieved even with dry profiles and the “blistering effect” (formation of bubbles in the coating process) can be eliminated. ESPOC can be applied on various profile contours at the desired surface, including protrusions and undercuts.

Without ESPOC coating



With ESPOC effect

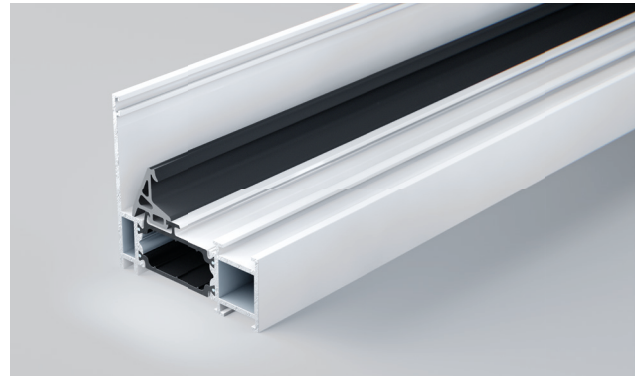
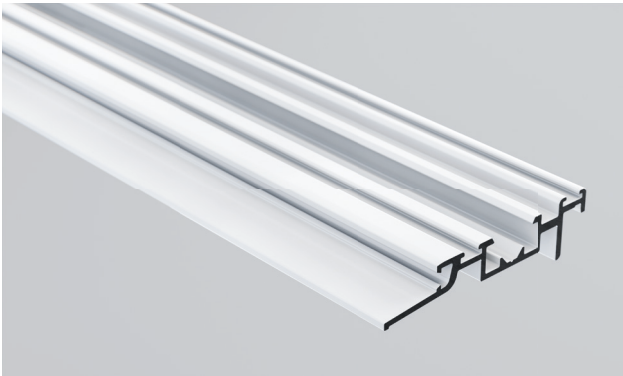


 Poor coating results
 Best results

How does it work?

The surface is made electrically conductive using an innovative process. The electrostatically charged powder particles are attracted to the earthed surface of the insulating profile in a similar way to the attraction of conductive

metals. This means that both aluminium-plastic assembled profiles and solitary PA profiles can be optimally coated, resulting in an outstanding appearance in both cases.



Advantages at a glance

Optics

- High-quality appearance in the profile system
- Perfect coating result possible

Flexibility

- Applicable to existing or new standard and customised profiles
- Can be applied to many insulbar materials
- Available as an option

Process improvement

- Safer and improved powder coating process
- Lower reject rate
- Improved paint adhesion
- High attraction in the powder coating process in assembled or solitary profiles

Further advantages

- New and greater degrees of freedom in the design of visible insulating profiles
- Unchanged thermal conductivity of the base profile
- Consistent mechanical properties

Contact insulbar Germany

Ensinger GmbH
Rudolf-Diesel-Straße 8
71154 Nufringen
Tel. +49 7032 819 0
Fax +49 7032 819 270
insulbar@ensingerplastics.com

Ensinger GmbH
Wilfried-Ensinger-Straße 1
93413 Cham
Tel. +49 9971 396 0
Fax +49 9971 396 570
insulbar@ensingerplastics.com

insulbar.com