

Aeroxx 750

BUILDING AIR PURIFIER

**Bye bye dust,
hello clean air!**



**FOR DUST-FREE
WORKING IN ROOMS**

thanks to constant
extraction and filtration

H13 HEPA filter

Filter performance 99.95%

The best

Circulation perfor-
mance in its class



WITH SOCKET
for appliances



More
information

Better for you, better for others and better for the environment

You are on the construction site, have a vacuum cleaner with you, are wearing a respirator mask and feel well equipped. But sometimes you would like to do without the mask or the work becomes even dustier than expected - and above all dustier than is good for you and your surroundings. At such times, a construction air purifier can be a decisive relief.

**CLEAN CONSTRUCTION
STARTS HERE!**



VACUUMS

SUITABLE



THE AEROXX

Our construction air purifier effectively filters dust from the air sucked in and returns it to the environment in a purified state back into the environment. It therefore not only protects health, but also actively contributes to the prevention and reduction of damage caused by dust in accordance with TRGS 504. Laborious cleaning work caused by settling dust is reduced. The resulting time savings are an added bonus for tradesmen and builders alike.

Also ideal for challenging building materials such as inhalable and respirable dusts, e.g. concrete, plaster and hardwood dusts, the construction air cleaner ensures a safe working environment.

Flexible in use: Use it for air circulation alone or in combination with supply/exhaust air hoses - for maximum efficiency on any construction site.



Article no.	130224	Scope of delivery	1 pc. Main filter (HEPA H13), 1 pc. Pre-filter, 1 pc. Mains cable
Technical data			
Voltage	220-240V / 50-60Hz	Dimensions	35 × 38 × 41 cm
Power consumption	170 watts ECO - 250 watts MAX	Mains cable length	3 m
Power output via socket	3200 watt	Filtration capacity main filter	99,95 %
Volume flow	580 ^{m³/h} ECO - 750 ^{m³/h} MAX	Main filter	HEPA H13
Negative pressure	1.9 mbar ECO - 2.5 mbar MAX	Weight (without accessories)	10,5 kg
Sound pressure level/volume	66.1 dB(A) at MAX	IP protection class	IP 44

ACCESSORIES

Supply air hose (Ø 250 mm, 6 m length, 5.3 kg) Art. no. 466125



Exhaust air hose (Ø 150 mm, 6 m length, 3.2 kg) Art. no. 466163



Main filter (HEPA H13) for fine dust (filter area 2.83m²) Art. no. 466101



Pre-filter (5 pack) for coarse dirt (filter area 0.35m²) Art. no. 466118



- **Lightweight and compact**, so quickly to hand for daily health protection
- **Powerful long-running turbine** for high air purification indoors
- **Impact-resistant plastic** withstands shocks during hard use
- **Access flap for tool-free filter change**
- **Socket for series connection** of several Aeroxx or for connecting power tools

DETAILS / EQUIPMENT

The well thought-out equipment, such as a clear control panel with hour display and an integrated socket, is designed for maximum efficiency. This ensures a clean, safe and productive working environment that makes everyday work on the construction site much easier.



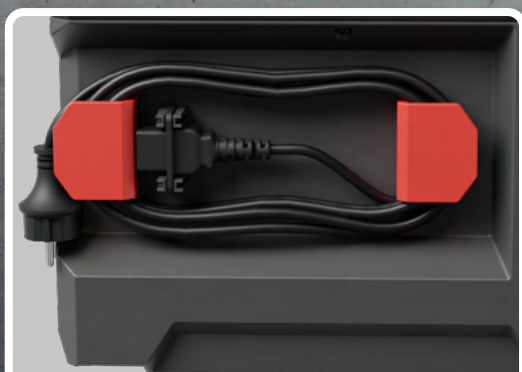
Power switch with ECO/
MAX mode.



Sturdy handle for convenient transportation and quick repositioning.



Operating hours counter. Display when volume flow rate is undercut.

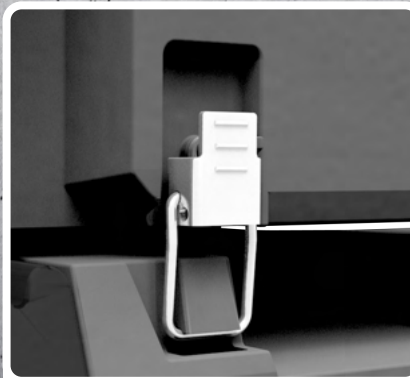


Space-saving cable rewind, neatly stowed away on the appliance.





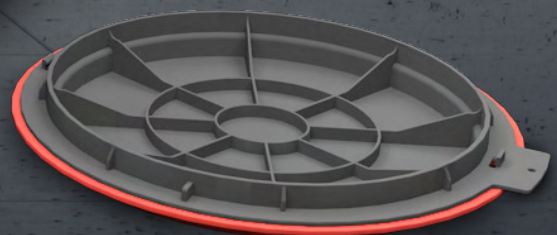
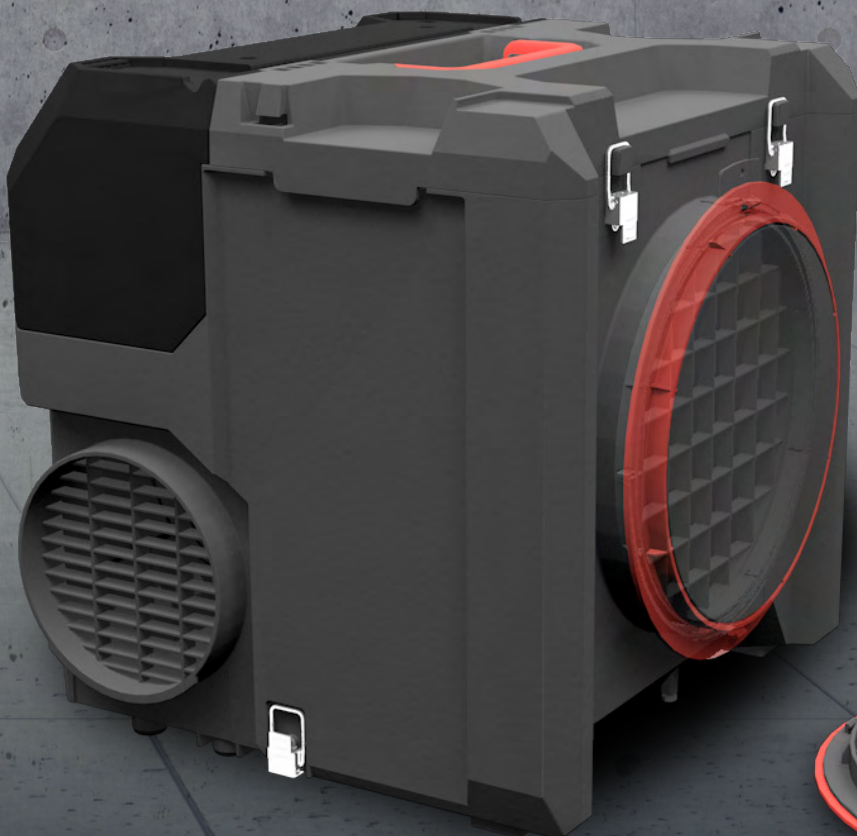
Connection for exhaust air hose.



Locks for coupling several devices.

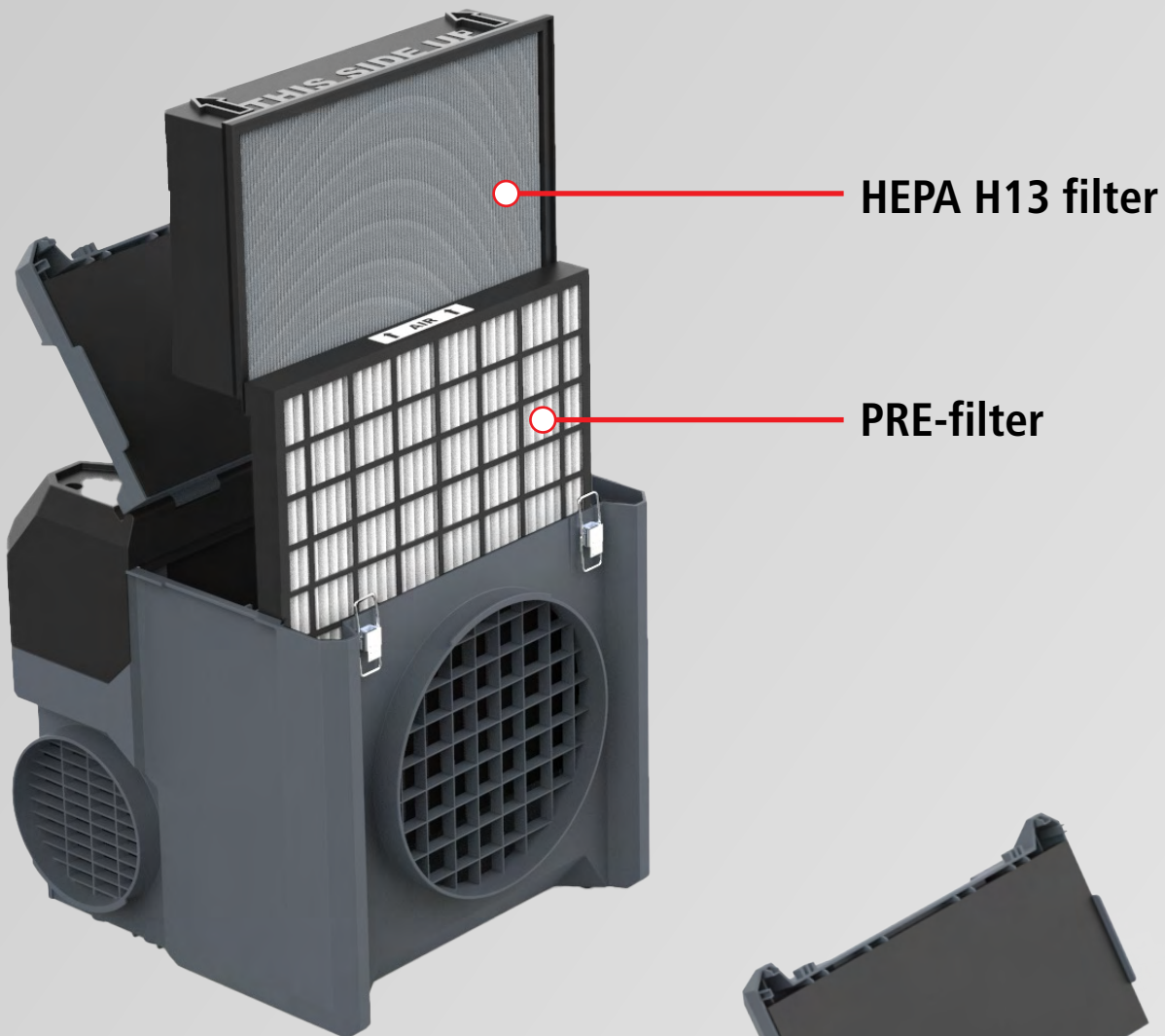


Connection for supply air hose, with cover for dust-free transport.



2-STAGE FILTER SYSTEM

The cost-effective pre-filter traps coarse dirt such as visible dust and larger particles. This protects the high-quality HEPA main filter from damage and significantly extends its service life. This keeps the air cleaning performance at a consistently high level. The result: less maintenance, lower operating costs and reliable air quality on the construction site.



Access flap


Comfort without compromise

Effortlessly check filter assignment: The access flap is easy to open so that you can insert and remove the filters in no time at all - without any tools.



MODULAR SYSTEM

The Aeroxx can be flexibly stacked on top of each other and coupled to enable extended and even more efficient air purification. This also makes it suitable for air purification in larger rooms. Several devices can be connected in series for operation via the socket.

 More than ten devices can be connected!



VARIABLE APPLICATION OPTIONS

The Aeroxx can be used for recirculating air cleaning or in negative pressure mode.

Air circulation with the device



Directly in the room. One or more units can be set up, even in series.



Intake at the dust protection wall/door. The cleaned air goes into the adjacent room.



Air routing with optional hoses

By using hoses, the air can be drawn in and discharged over a greater distance.

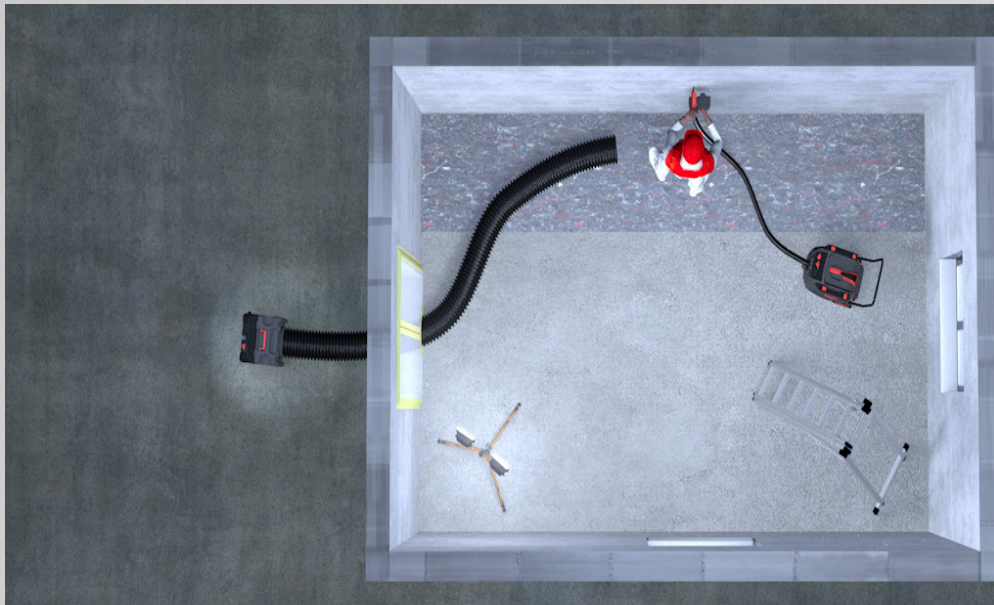
- ★ The intake hose can be placed directly at the dust source or work location.
- ★ The air is not blown out at the work site via the exhaust hose. Dust that has already fallen does not return to breathing height.



Extraction through supply air hose in the room. The cleaned exhaust air is fed through the dust protection wall into the adjacent room via a hose.

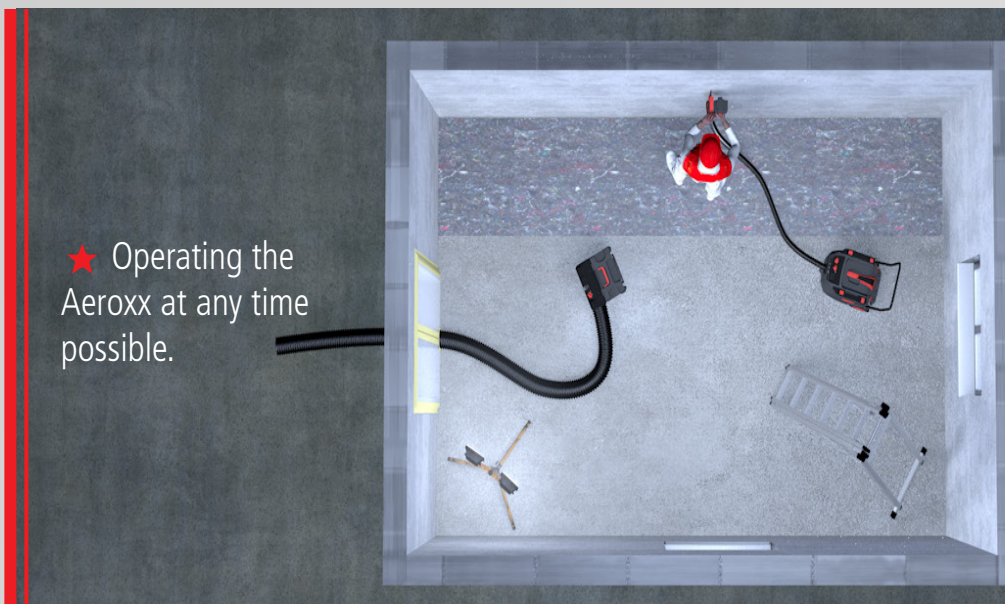


Other hose variants



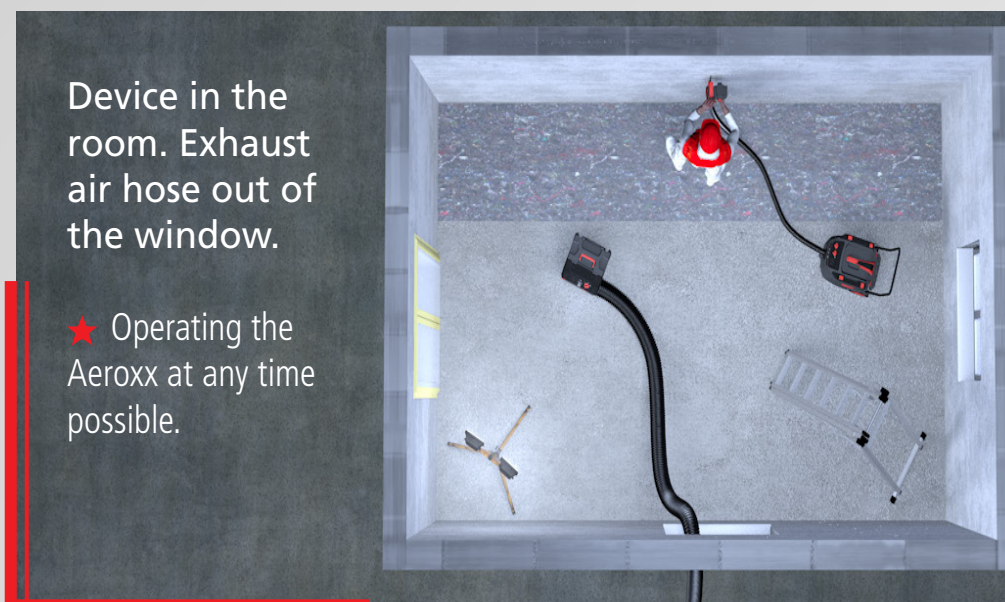
Supply air hose in the room. Device and cleaned exhaust air in the adjoining room.

★ The Aeroxx remains clean.



★ Operating the Aeroxx at any time possible.

Device in the room. Exhaust air hose leads into the adjoining room.



Device in the room. Exhaust air hose out of the window.

★ Operating the Aeroxx at any time possible.

ABOUT DUST

Facts that will leave you breathless:

- Dust is everywhere, even in outer space - no matter how thoroughly you clean.
- Certain types of manual work often cause very high dust emissions, e.g. drilling, chiseling, milling, sawing or sanding.
- Without suitable protective measures, the released dust particles are inhaled and, depending on the particle size, in the worst case can penetrate into the alveoli, where they can cause serious damage to health.
- Respirable fine dust and ultra-fine dust can no longer be stopped by any filter hairs.
- In Germany alone, more than 6,000 dust-related respiratory diseases are recognized as occupational illnesses every year.
- Incidentally, aerosols are also a form of dust.



Fine dust is divided into particle diameters and differentiated accordingly. Ultra-fine dust is classified as particles with a diameter of less than 0.1 μm . While coarse-grained (usually visible) dust remains "stuck" in the nose, very small particles ($< 2.5 \mu\text{m}$) penetrate into the alveoli and the bloodstream. These harmful tiny particles are mainly produced on site. The more filtration options are used, the less fine dust gets into the air and consequently into the lungs of tradespeople.



More about dust

**YOUR HEALTH.
YOUR PROJECTS.
YOUR SUCCESS,
PROTECT, WHAT
MATTERS TO YOU.**

