


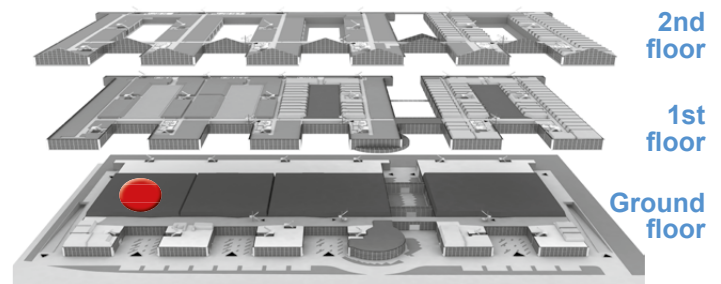


MOC Veranstaltungszentrum München

DETAILS ON HALL 1

Spaces/rooms	Floor space in m ²	 Theater	 Classroom	 Banquet
Hall 1	2,955	1,630	700	1,520

Hall 1 offers natural light and is directly accessible via the foyer. Its location provides for quick and easy access to conference rooms 1 and 2. Comfortable planning: our halls offer covered delivery zones for a smooth, rapid set-up and dismantling of your event.

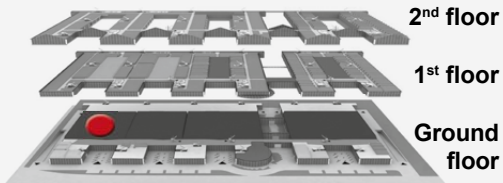


Technical data	
Size	<ul style="list-style-type: none"> Total floor area 2,995 m²
Room height	<ul style="list-style-type: none"> 4.40 m clearance 4.00 m usable height
Walls	<ul style="list-style-type: none"> up to 2.50 m high Chipboard with wood frame substructure
Supporting structure	<ul style="list-style-type: none"> Steel composite structure 12 m x 12 m column grid
Load capacity	<ul style="list-style-type: none"> 1.5 t/m² 18 t truck weight permitted 7.5 t forklift weight permitted Only electric forklifts (exclusively through our authorized service partners)
Floors & utility ducts	<ul style="list-style-type: none"> Mastic asphalt floor cover Utility ducts for water, sewage and electrical provisions spaced at 12 m x 6 m grid
Electrical installation	<ul style="list-style-type: none"> Power supply approx. 230/400 volts, 50 Hz (50 watts/m²) Connection via utility ducts
Communication	Ceiling connections for: <ul style="list-style-type: none"> Telephone Fax IP connections W-LAN for organizers
Indoor climate	<ul style="list-style-type: none"> Ventilation system for cooling and heating
Lighting	<ul style="list-style-type: none"> 350 Lux
Public address/second system	<ul style="list-style-type: none"> For announcements Can be isolated to specific areas
Water connection	<ul style="list-style-type: none"> Water supply 1" Drainage NW 100 via utility ducts spaced at 6 m x 12 m
Sanitary Facilities	<ul style="list-style-type: none"> WC areas in each hall and in foyers, with separate facilities for handicapped

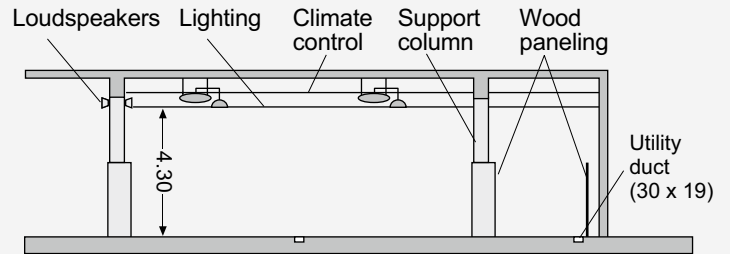
MOC Veranstaltungszentrum München

DETAILS ON HALL 1

Overview



Sectional view



Note: Height of wood paneling 2.50 m

