

ROMA INSULATION SYSTEMS

---

## NEW: Roof panels for PV modules

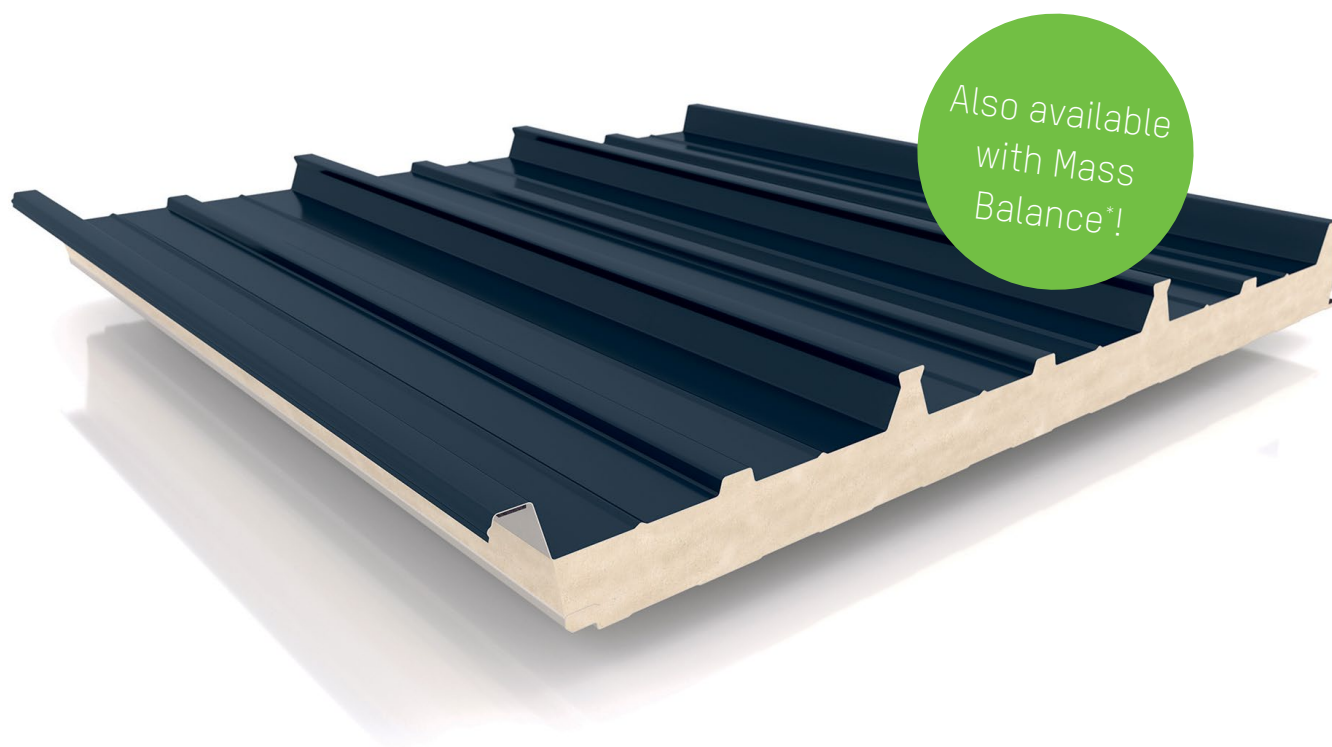
---

Quick-mount roof panels type RD

SO EVERYTHING FITS. **ROMA**



## ROMA quick-mount roof panel type RD



The RD roof panel is an innovative sandwich panel that significantly simplifies the installation of a PV system. Thanks to the dovetail-shaped ROMA roof profiling, PV systems can be securely and efficiently mounted without drilling through the outer shell of the panel. Interlocking, approved clamps allow for easy and quick installation of the PV system, making the roof panel the ideal choice

for high-quality, energy-efficient, and future-proof sandwich roofs.

The RD roof panel consists of two high-quality steel cover layers and a PIR rigid foam core with a factory-applied triple-seal in the joint. It combines robust surfaces, excellent insulation properties, and easy compatibility for mounting PV modules. The sandwich element is available in a construction

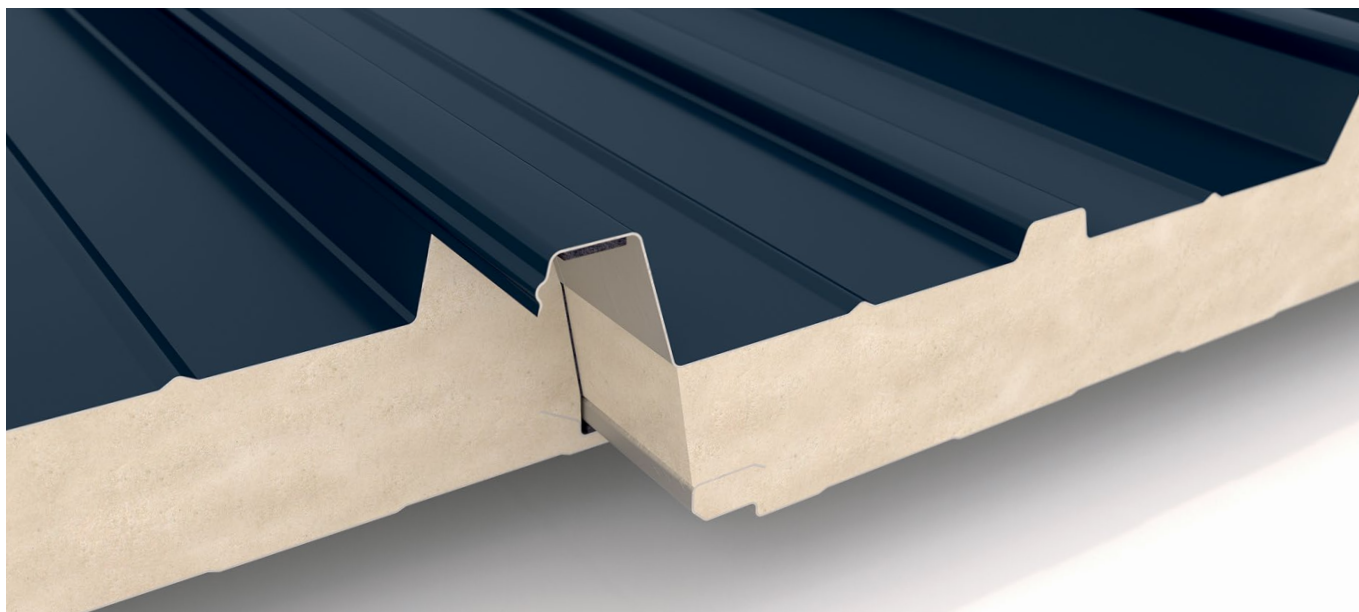
width of 1,000 mm, lengths of up to 25 meters, and insulation thicknesses of up to 170 mm (RD212).

Thanks to its optimized profiling, it is also suitable for large spans. The RD roof panel is available in various designs with different insulation thicknesses, surface coatings, and colors, suitable for any construction project.



Production hall with horizontally installed PV modules.

## Simple Assembly – Intelligent Connection



Overlapping high rib.



Gabled roof of a hall with RD roof panels and horizontally installed PV modules without rails.

### Installation Process

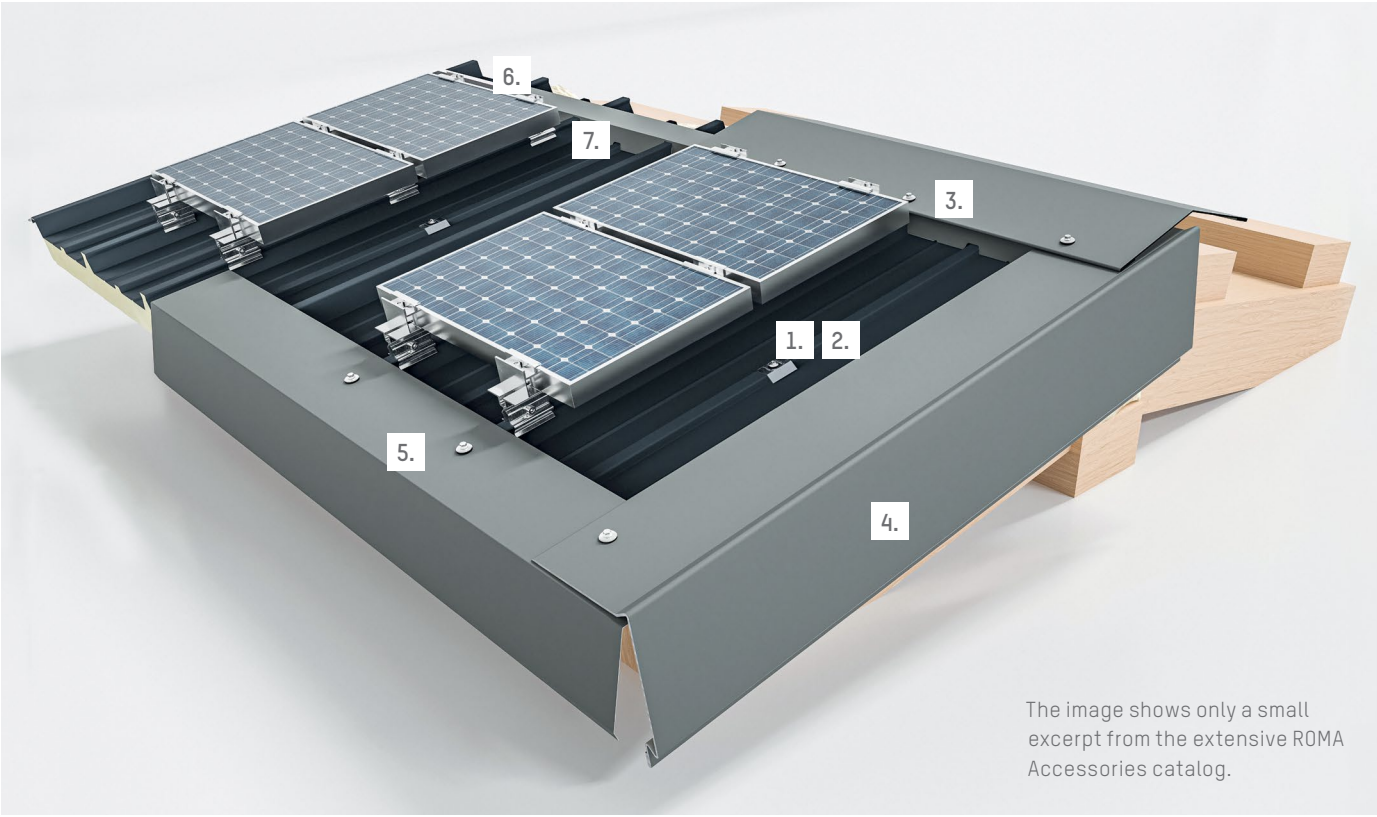
Benefit from a simple and time-saving installation: With our ROMA panels available in generous lengths of up to 25 meters, most roof sections can be laid in a single piece. This is achieved by overlapping the ribs, where the non-foamed metal part of one panel is placed over the corresponding part of the next panel. We recommend laying the panels against the main weather direction.

The attachment of PV modules is done using approved clamps, without penetrating the sandwich panels outer shell. This prevents corrosion and leaks, while allowing for easy positioning and adjustment of the modules. The fastening in the deep rib can be done either with or without caps and is independent of the mounting plane of the photovoltaic system.

### Your Advantages:

- No drilling through the panel outer shell
- Fast and simple assembly, possible without aluminum rails
- Insulation and roof covering in one component
- Exact, thermal bridge-free connection
- Immediately walkable and self-supporting
- Weather-independent installation
- Cover layers with protective film for transport and installation
- Delivery to the construction site available upon request
- Tailored bundling of the elements
- Compatible with ROMA MIWO & PIR roof panels
- Panel length up to 25 m without cross joints
- Optimal ventilation of the PV modules

# Roof Accessories – Everything from a Single Source



The image shows only a small excerpt from the extensive ROMA Accessories catalog.

Our ROMA roof panel, combined with practical quality accessories, becomes a modern roofing system that perfectly addresses all connection and detail points. For the installation of a PV system, we offer three different types of clamps: the base clamp for securing the PV module, the frame end clamp for the finishing and the frame middle clamp for connecting two modules.

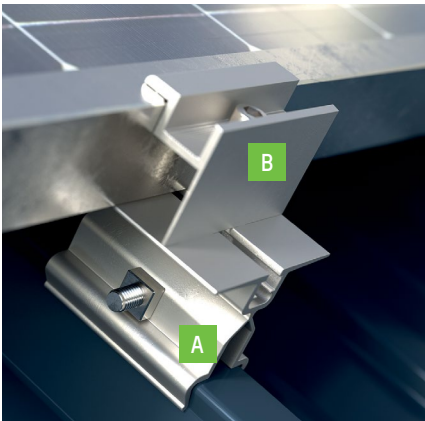
### Accessories for PV System Installation

- A

Base clamp
- B

Frame end clamp
- C

Frame centre clamp



Whether for steel, aluminum, or timber structures, the ROMA roof panel and its system accessories provide elegant connection solutions, such as:

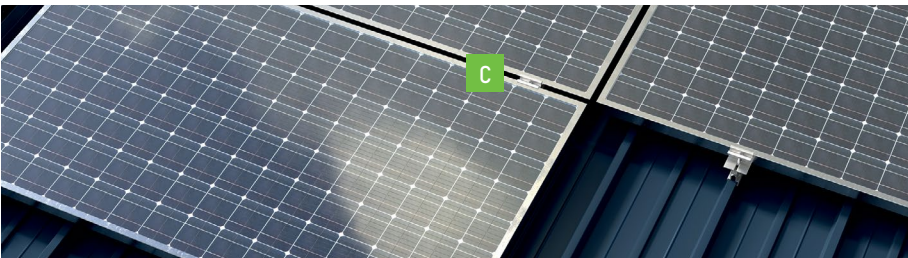
- Ridge and eaves constructions forgabled and monopitch roofs
- Structural connections
- Connections to other buildings
- Skylights
- Roof lights

### Accessories for the ROMA Roof Panel:

1. Cap
2. Fixing screws
3. Ridge cap
4. Eaves profile
5. Eaves sheet
6. Rib filling tape
7. Tooth plate

You can find the complete range of ROMA accessories in our edge component catalog. Additionally, we also manufacture custom accessories according to your specifications.

Contact us – we’re happy to help.

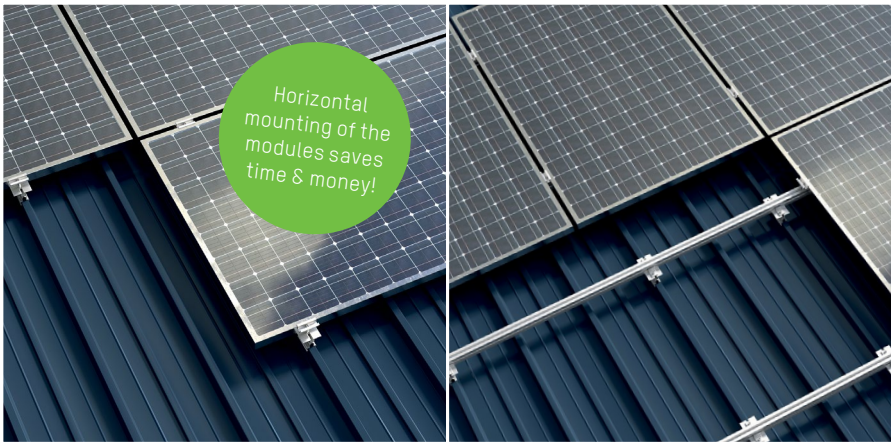




# Economic Construction and Versatility of Use

## One Panel – two mounting options

The setup of PV modules can be carried out with or without an aluminum rail system, depending on the orientation. We recommend horizontal installation to save time and costs. For vertical mounting, the system requires cross rails, but no drilling into the outer panel shell is necessary. The rails are clamped onto the high ribs with approved clamps. Additionally, you can obtain all the necessary components for securing and sealing at the ridge, eaves and gable directly from us.



Horizontal installation without rails.

Vertical installation with cross rails.

## Highest thermal insulation requirements

Easily meet the highest thermal insulation standards according to the Energy Saving Ordinance (EnEV). With ROMA, you benefit from our triple-seal system, which provides optimal thermal insulation and excellent insulation values for your roof.

## Panel lengths of up to 25 meters

Due to the innovative profile design and the force-fit connection with the rigid foam core, the ROMA RD roof panel demonstrates exceptional static properties. Its high strength, impressive load-bearing capacity, and relatively

low weight enable the production of exceptionally long panels, with lengths of up to 25 meters.

# Colors and Coatings

Explore our color and coating system with standard and custom colors. For the planning of a photovoltaic system on the new RD roof panel, we recommend the top-quality ROMApplus Premium coating as the standard option. This coating offers outstanding corrosion resistance with a total layer thickness of 50 µm,

meeting the IFBS recommendation for installing a PV system on a sandwich roof. For various other applications, polyester coatings and other systems are also available. The ROMA RD roof panel adapts to your specific technical requirements while enabling aesthetically pleasing design. The RD roof panel is available in

the standard colors RAL 9002, RAL 7035, RAL 7016, RAL 3009, Stratos and Mesos. Of course, the roof panel can also be provided in your desired custom color. Please note that for custom colors, a minimum order quantity of 500 m² per color applies.



## We offer a wide range of attractive colors.

Information on coating layers and color shades can be found in our color program.

<sup>1)</sup>International Association for Lightweight Steel Construction (IFBS).

# Properties, technical data, product overview

ROMA is a leading manufacturer of wall and roof sandwich panel elements for industrial and cold-store construction.

We develop, manufacture and market complete systems for industrial construction engineering as well as cold-store and deep-freeze cell and cell-door construction. Climate test chambers, cleanrooms, and specialized climate-control applications are also part of our product portfolio. We have over 75 years of success and experience in highly specialized construction sectors. Ever since its founding, our family-run company has always manufactured top-quality products Made in Germany.

## Approval

General building authority and building law approval for use as roofs/walls. Notification of approval Z-10.4-873 of the DIBt, Berlin and CE marking in accordance with DIN EN 14509.

## Planning details

Please consult our most recent technical data sheets for detailed planning specifications.

[www.romakowski.com/en/insulation-systems/downloads](http://www.romakowski.com/en/insulation-systems/downloads)



Roof renovation of a hall with the ROMA RD roof panel and integration of a PV system.

## Quality assurance and external monitoring

ROMA's high-precision double conveyor belt production line results in components of the highest quality and measurement accuracy.

### Cladding layers

External:	Galvanized steel	0.6/0.75 mm
Internal:	Galvanized steel	0.4/0.5 mm

### Fire tests

D	B1 acc. DIN 4102 – flame retardant; hard roofing
EU	Euro-Class B-s2, d0 acc. to EN 13501-1
FM	FM Approval (in progress)

### System dimensions

Unit width	1068 mm
Module width	1000 mm
Insulating thicknesses	82, 102, 122, 142, 162, 182, 212 mm
Panel dimensions	Panel length up to 25 m, Notching type R+L 60-300 mm possible from 3,200 mm panel length

### Weights, thermal insulation

ROMA quick-assembly insulating panels	Panel thickness	Insulation thickness (without beads)	Panel weight approx. <sup>2)</sup>	U-value certified to EN 14509 with joint <sup>3)</sup>
Typ	mm	mm	kg/m <sup>2</sup>	W/(m <sup>2</sup> ·K)
ROMA RD 82	82	40	12.2	0.542
ROMA RD 102	102	60	13.0	0.363
ROMA RD 122	122	80	13.8	0.273
ROMA RD 142	142	100	14.6	0.219
ROMA RD 162	162	120	15.4	0.183
ROMA RD 182	182	140	16.2	0.157
ROMA RD 212	212	170	17.4	0.129

<sup>12)</sup> Element weights refer to the standard version (external 0.6mm/internal 0.5mm)

<sup>3)</sup>  $\lambda_{\text{declared}} = 0,022 \text{ [W/mK]}$

This information is non-binding and prepared to the best of our knowledge while taking relevant standards and regulations into consideration. Drawings and pictures serve informational purposes only. All rights reserved by the publisher. Reproduction in whole or in part only by consent of Romakowski GmbH & Co. KG, Buttenwiesen, Germany. Our General Business Conditions (AGB) also apply



For more information, please visit our website:  
[www.romakowski.com](http://www.romakowski.com)

**Romakowski GmbH & Co. KG**  
Herdweg 31  
86647 Buttenwiesen  
Telefon +49 (0) 8274.999-0  
Fax +49 (0) 8274.999-150  
[info@romakowski.com](mailto:info@romakowski.com)