

CCN – Conference Center North Messe München

HALL OVERVIEW C6

including technical specifications

Hall	Area in m ²	Length in m	Width in m	Total capacity of people
Hall C6	10,000	approx. 143	71	5,000

Hall C6: Total flexibility

Hall C6 is directly connected to the CCN – Conference Center North Messe München. The state-of-the-art hall at ground level offers generous event space with plenty of natural light thanks to expansive glazing. Its column-free construction and a ceiling height of approx. 11 meters makes the hall fully vehicle-accessible. Hall C6 features mobile partition walls and can be individually divided in both transverse and

longitudinal direction, thus offering tailor-made solutions for exhibitions, conventions and meetings to suit any requirements. Events held on the upper floor of the CCN – Conference Center North Messe München can be combined with additional exhibition and catering areas in Hall C6 and with other conference halls of various sizes to create an attractive, customized event space.

Space dividing options

The partition walls provide for optimum sound absorption due to their multi-layered structure. This special feature enables customers to use individual, separate sections of the hall as an auditorium for lectures, while an exhibition is taking place in another section at the same time. All partition walls provide for optimum sound absorption due to their layered structure.

This enables us to arrange and divide the space also according to acoustic requirements so important to conference environments, as well as to the specific requirements of your event. For example, individual, separate sections of the hall can be used for a series of lectures while consecutively holding presentations in another partitioned-off area.



CCN – Conference Center North Messe München

DETAILS HALL C6

Technical Data Measurements	
Length	■ approx. 143 m
Width	■ 71 m
Gross exhibition area	■ approx. 10,000 m ²
Clear height of longitudinal wall (hall perimeter between entrances)	■ approx. 5.70 m
Clear height of hall girder supports (hall sides)	■ approx. 10.75 m
Clear height of tie (hall center)	■ approx. 11.50 m
Clear height (under fixed bulkhead partition)	■ approx. 8.95 m
Hall floor	■ mastic asphalt
Permissible distributed load	■ 5 t/m ² (50 kN/m ²)
Permissible point load (support area 0.3 m x 0.3 m, spacing approx. 1.5 m) does not apply to utility duct cover	■ 10 t (100 kN)
Permissible vertical load at each suspension point	■ 25 kg (0,25 kN)/m ² or ■ 500 kg (5 kN)
Hall gates: (Size) and [Number]	
Vehicular access permitted	■ 4.5 m x 4.5 m [8]
No vehicular access	■ 2.5 m x 4.5 m [2]
Artificial illumination	■ max. 300 Lux/m ²
Ventilation	■ partially air-conditioned
Utility supply ducts transverse to hall length, axes spaced at	■ 5 m
Width of utility ducts	■ 0.35 m
Width of utility duct cover	■ 0.43 m

CCN – Conference Center North Messe München

DETAILS HALL C6

Technical Data | Utility Connections

Water ■ DN 25/min. 3.5 bar

Wastewater ■ DN 100

Sprinklers ■ DN 50

Compressed air ■ DN 50/min. 10 bar

Electricity supply ■ 200 W/m²

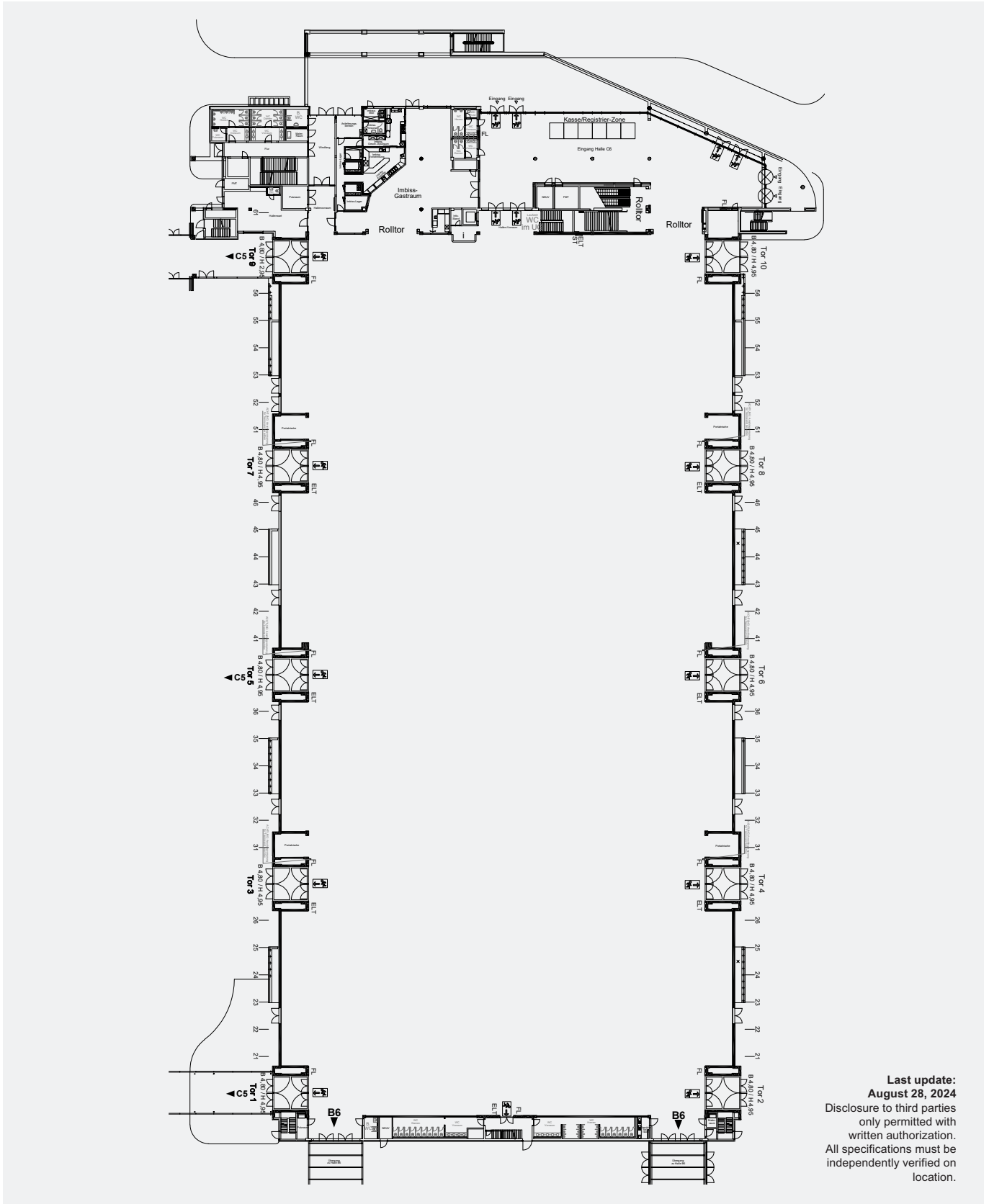
Telecommunications ■ 600
User-neutral,
wireline connections
(phone, fax, analog,
ISDN, DSL, LAN)

Wideband connections (TV) ■ 150

Fiber-optic connections
(Single-mode and/or gradient) ■ 300

CCN – Conference Center North Messe München

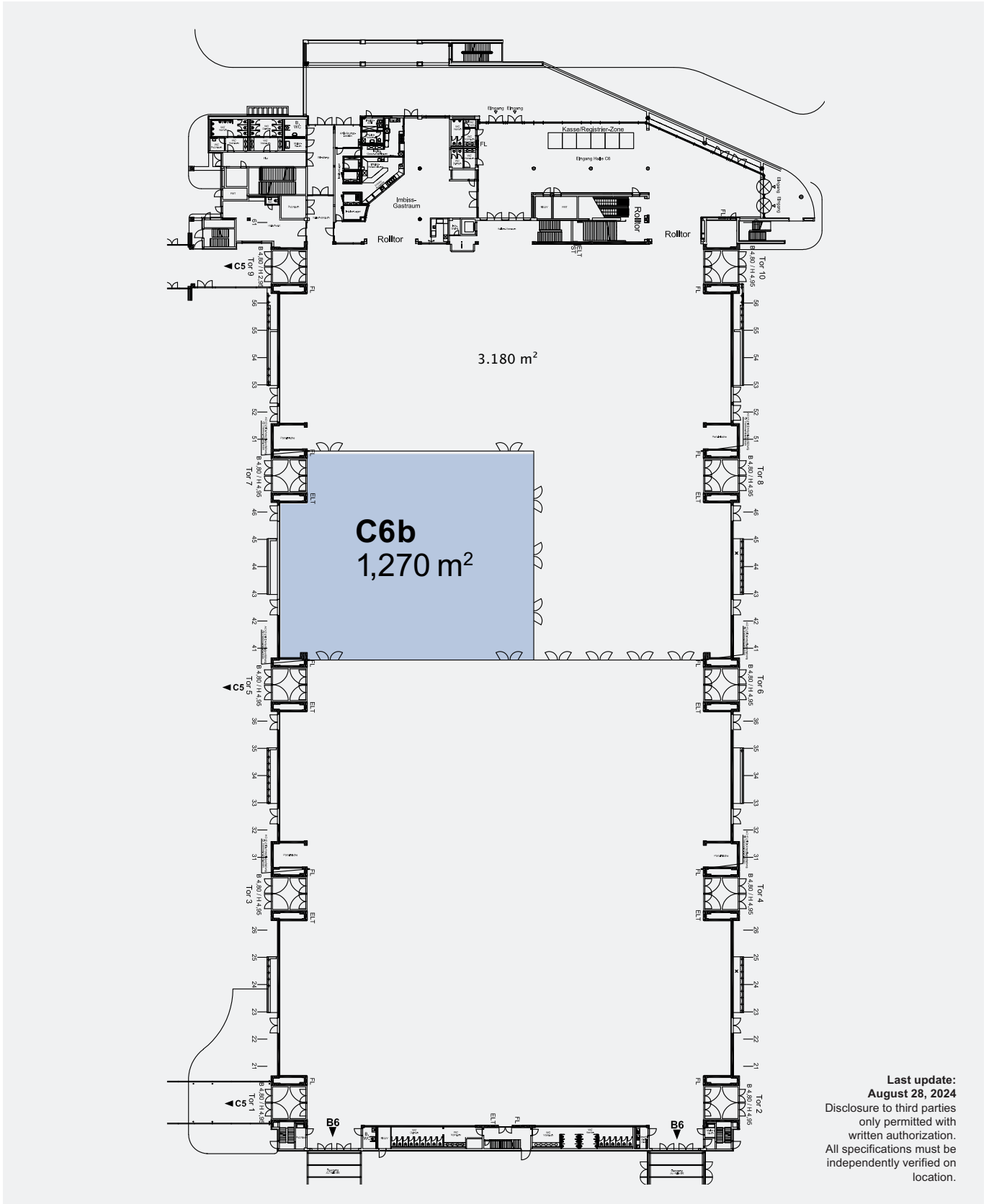
HALL OVERVIEW C6: EMPTY



Last update:
August 28, 2024
Disclosure to third parties
only permitted with
written authorization.
All specifications must be
independently verified on
location.

CCN – Conference Center North Messe München

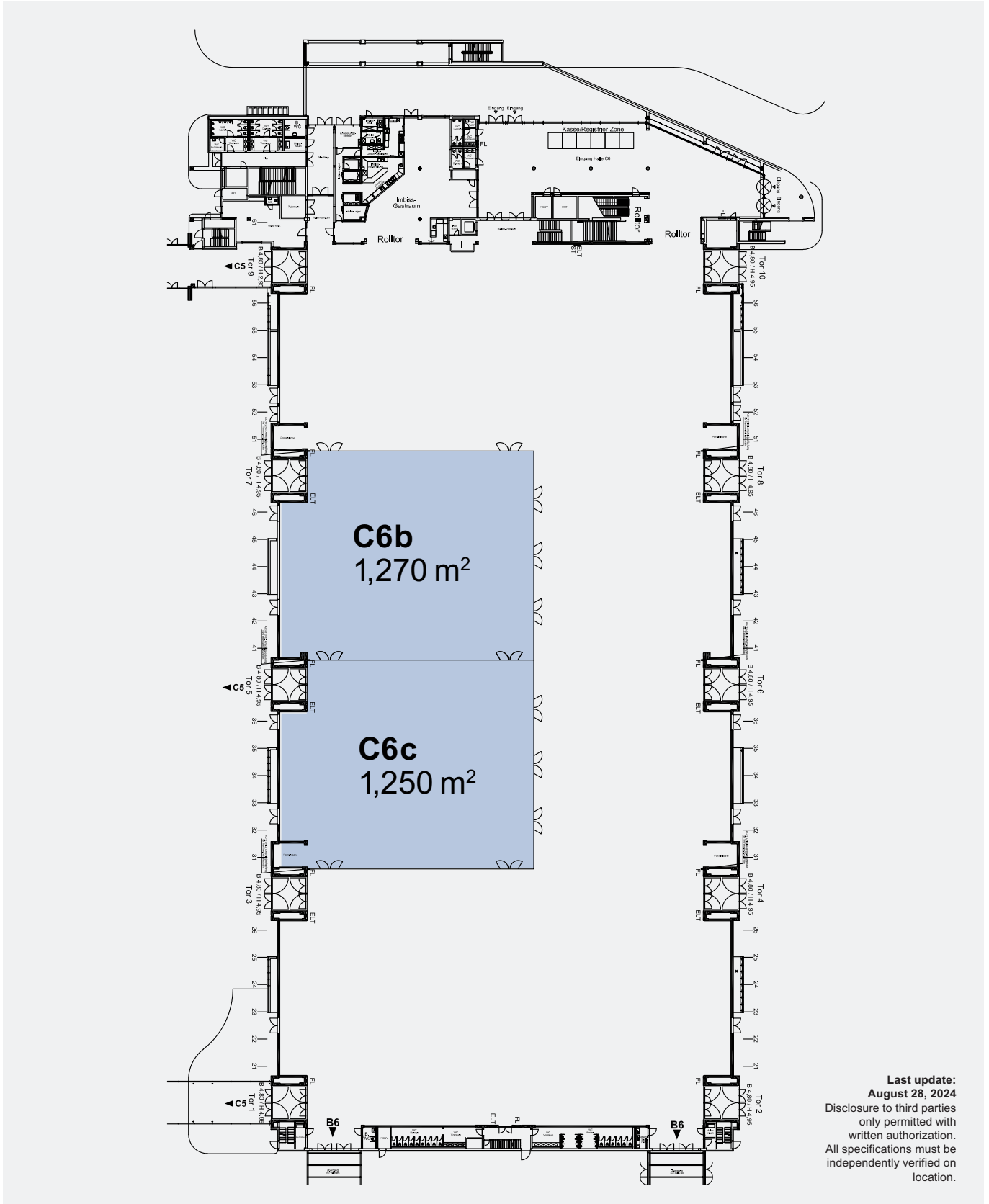
HALL OVERVIEW C6: SPACE DIVIDING OPTION C6b



Last update:
August 28, 2024
Disclosure to third parties
only permitted with
written authorization.
All specifications must be
independently verified on
location.

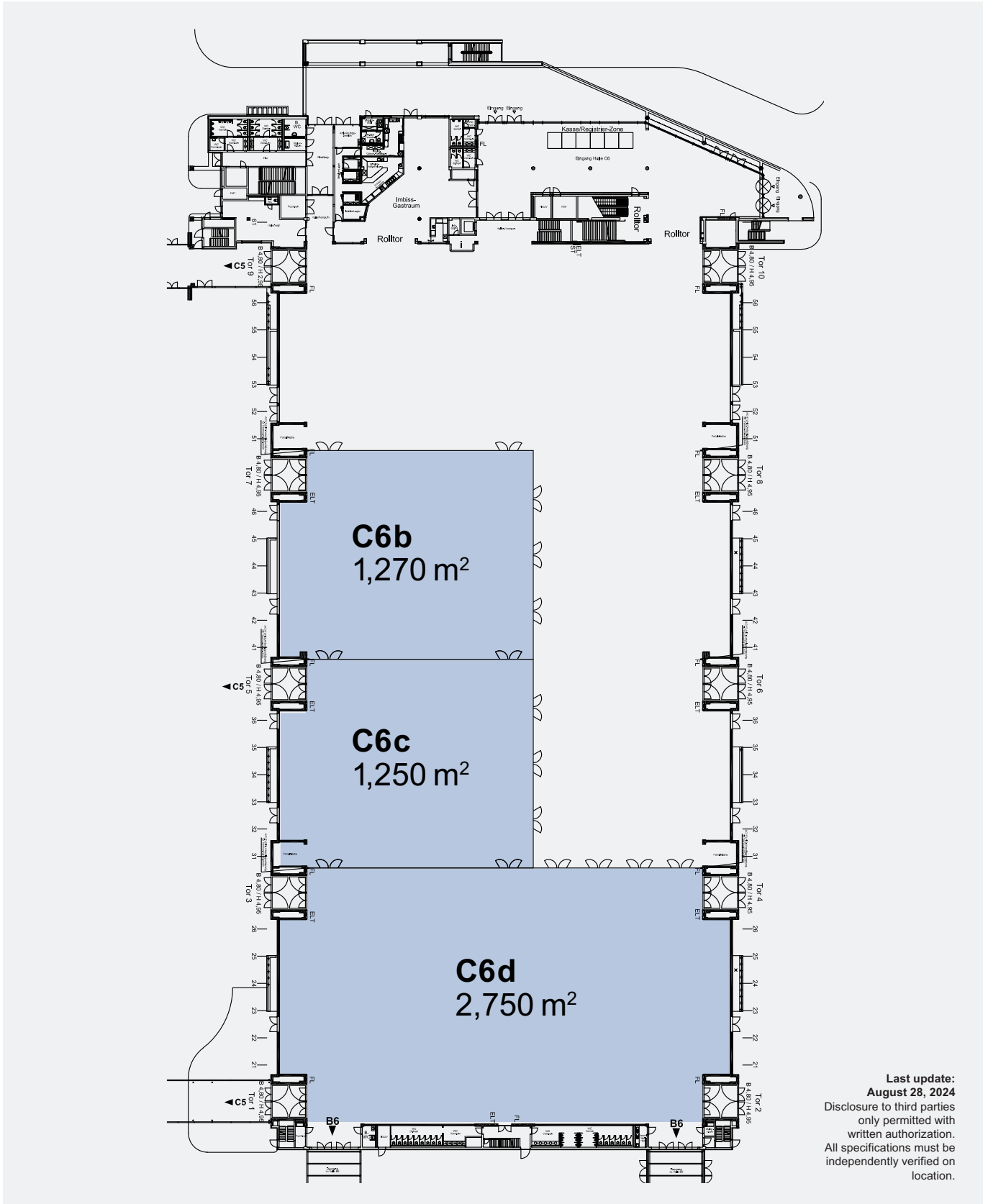
CCN – Conference Center North Messe München

HALL OVERVIEW C6: SPACE DIVIDING OPTION C6b + C6c



Last update:
August 28, 2024
Disclosure to third parties
only permitted with
written authorization.
All specifications must be
independently verified on
location.

HALL OVERVIEW C6: SPACE DIVIDING OPTION C6b + C6c + C6d



Last update:
August 28, 2024
Disclosure to third parties
only permitted with
written authorization.
All specifications must be
independently verified on
location.