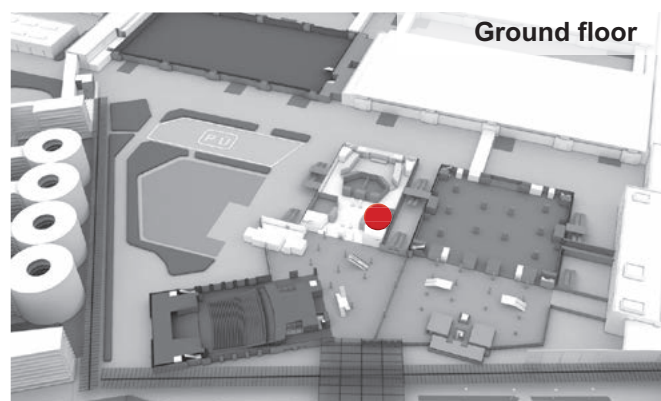


Areas/rooms	Area in m ²	 Theater	 Classroom	 Banquet	 U-shaped
Room 3	135	125	68	72	32

Perfect for Events with up to 125 Guests

Due to its size and equipment, the multi-purpose Room 3 is particularly suitable for lecture events, conferences, presentations, meetings on a smaller scale or workshops with up to 125 guests. On 135 m², it offers space for 125 people seated in rows, 68 classroom seats or 72 seats in banquet format. The high standard of equipment includes screens, control booths, and various connectivity options via floor conduits (electrical, telecommunications and sound). The windows feature darkening facilities.



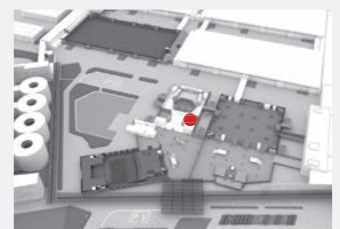
Specifications	
Location	<ul style="list-style-type: none"> Deliveries on north side of building via delivery gate in north foyer
Suitable for	<ul style="list-style-type: none"> Smaller lectures, presentations, meetings, group work, etc.
Size/capacity	<ul style="list-style-type: none"> 135 m², seats 125 people in rows, 68 people with classroom seating, 72 people with banquet seating Other seating arrangements possible with authorization from fire department
Special features	<ul style="list-style-type: none"> Daylight—but can also be darkened. Cannot be partitioned. A control booth is located on the back wall, 3.50 m above the room the distance to the screen is 13 m. Permissible floor load: 500 kg/m² (5 kN/m²)
Screen	<ul style="list-style-type: none"> The room is equipped with a permanently installed front-projection screen with a visible projection area of 5.30 m x 3.50 m (w x h). The screen is rolled up on a drum and can be lowered when needed. Other portable screens for front and rear projection are also available.
Media equipment	<p>Room 3 is equipped with 32+8-channel digital mixing console and an L-Acoustics sound system.</p> <ul style="list-style-type: none"> PTZ camera 4-channel UHF microphone system Option to install additional media technology. Audio and video cross-connections into other halls and rooms possible
Lighting	<ul style="list-style-type: none"> The room is equipped with dimmable downlights that are permanently installed at a height of 4.50 m. They can be controlled both in the room itself and from the control booth.

ICM – International Congress Center Messe München



ROOM 3: EMPTY



Area in m ²
135



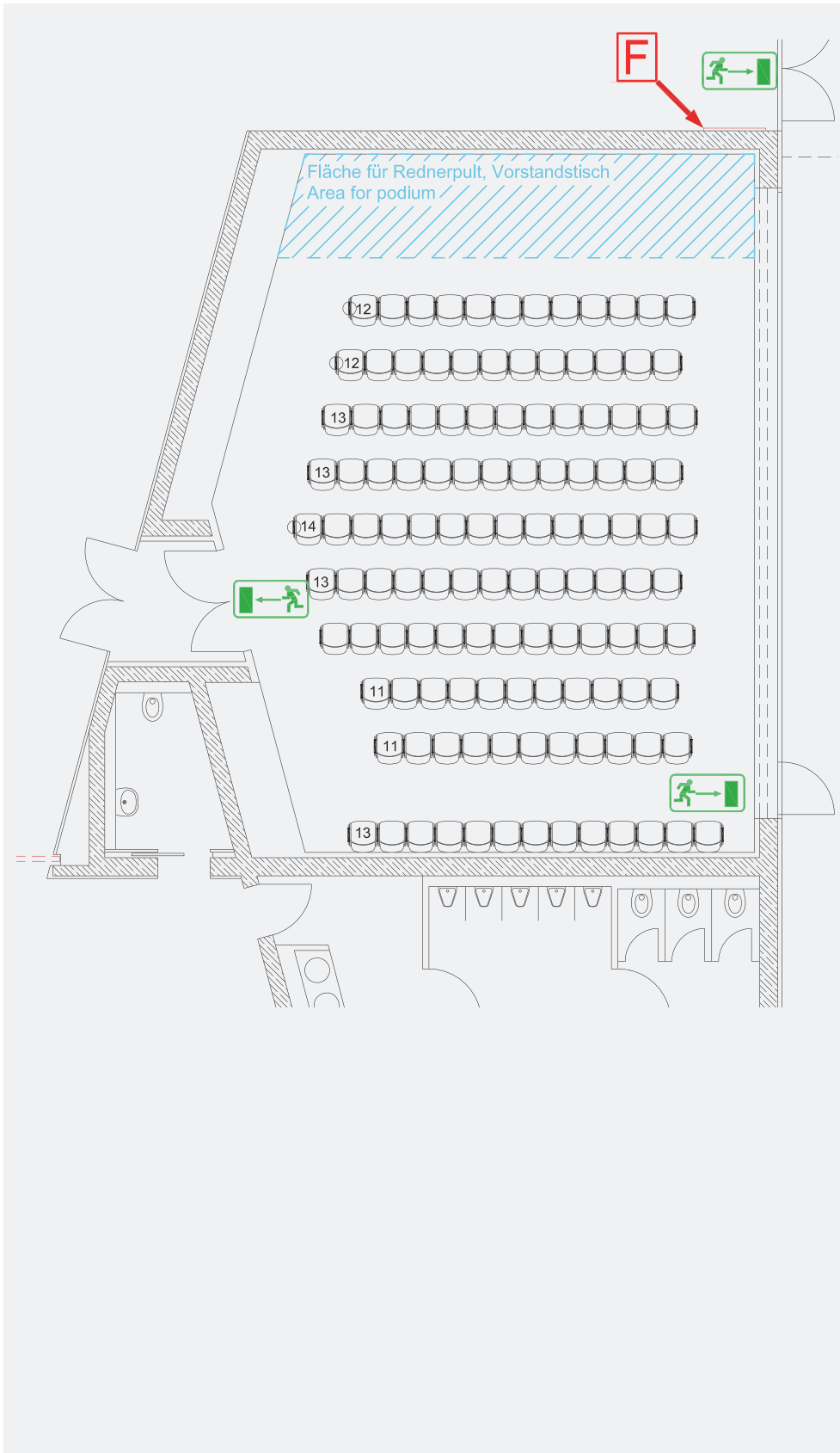
Ground floor

- Extinguisher 
- Escape route 


Last update: October 11, 2019
Disclosure to third parties only permitted with written authorization.
All specifications must be independently verified on location.

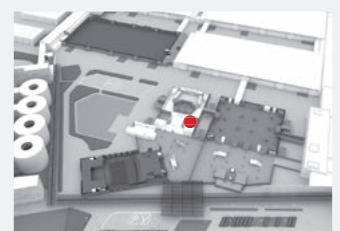
ICM – International Congress Center Messe München

ROOM 3: THEATER SEATING





Area in m²
135

 Theater
125



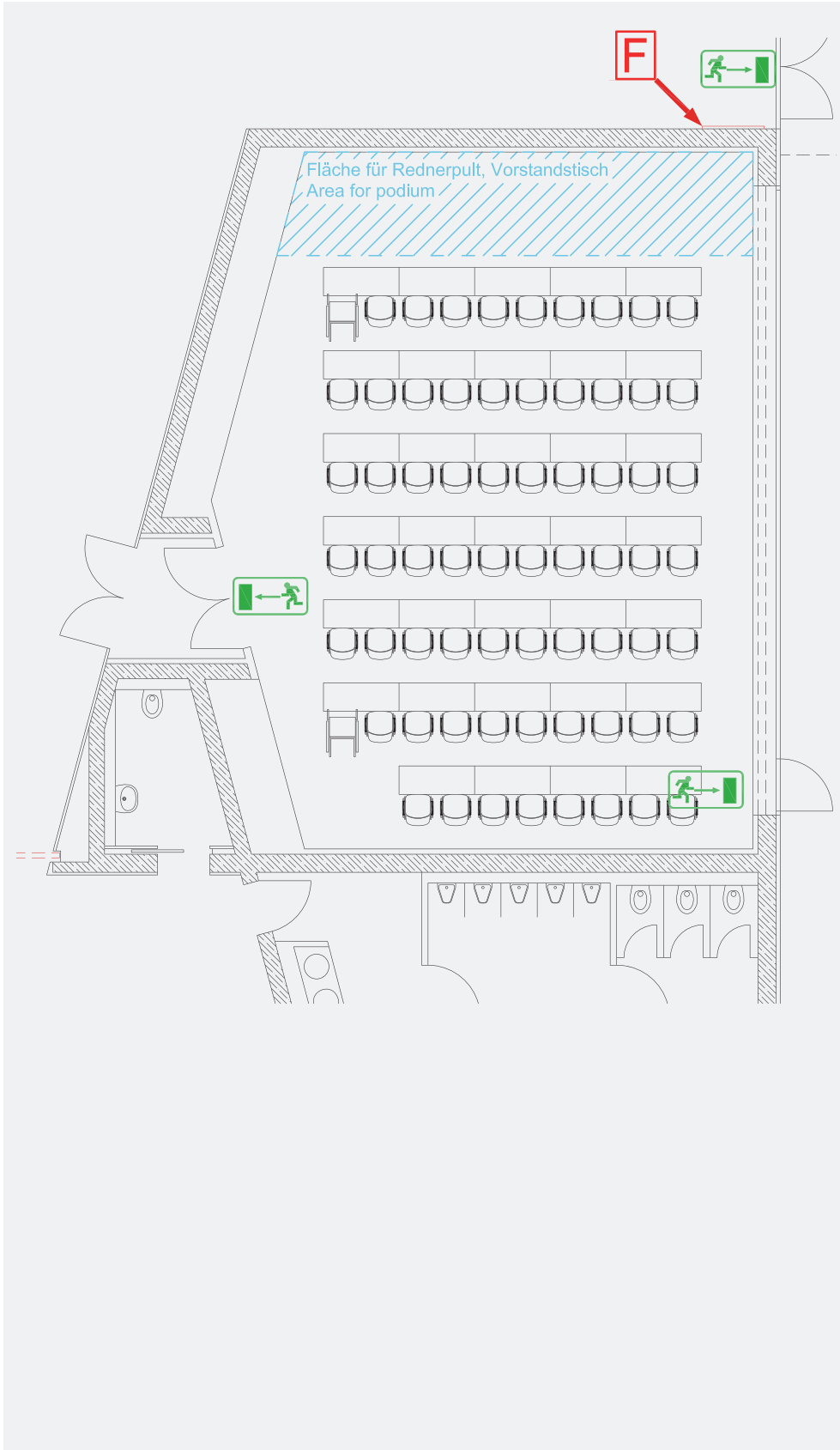
Ground floor

Extinguisher 
Escape route 

Last update: October 11, 2019
Disclosure to third parties only permitted with written authorization.
All specifications must be independently verified on location.

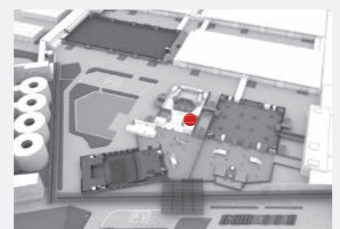
ICM – International Congress Center Messe München

ROOM 3: CLASSROOM SEATING





Area in m²
135

Classroom
68



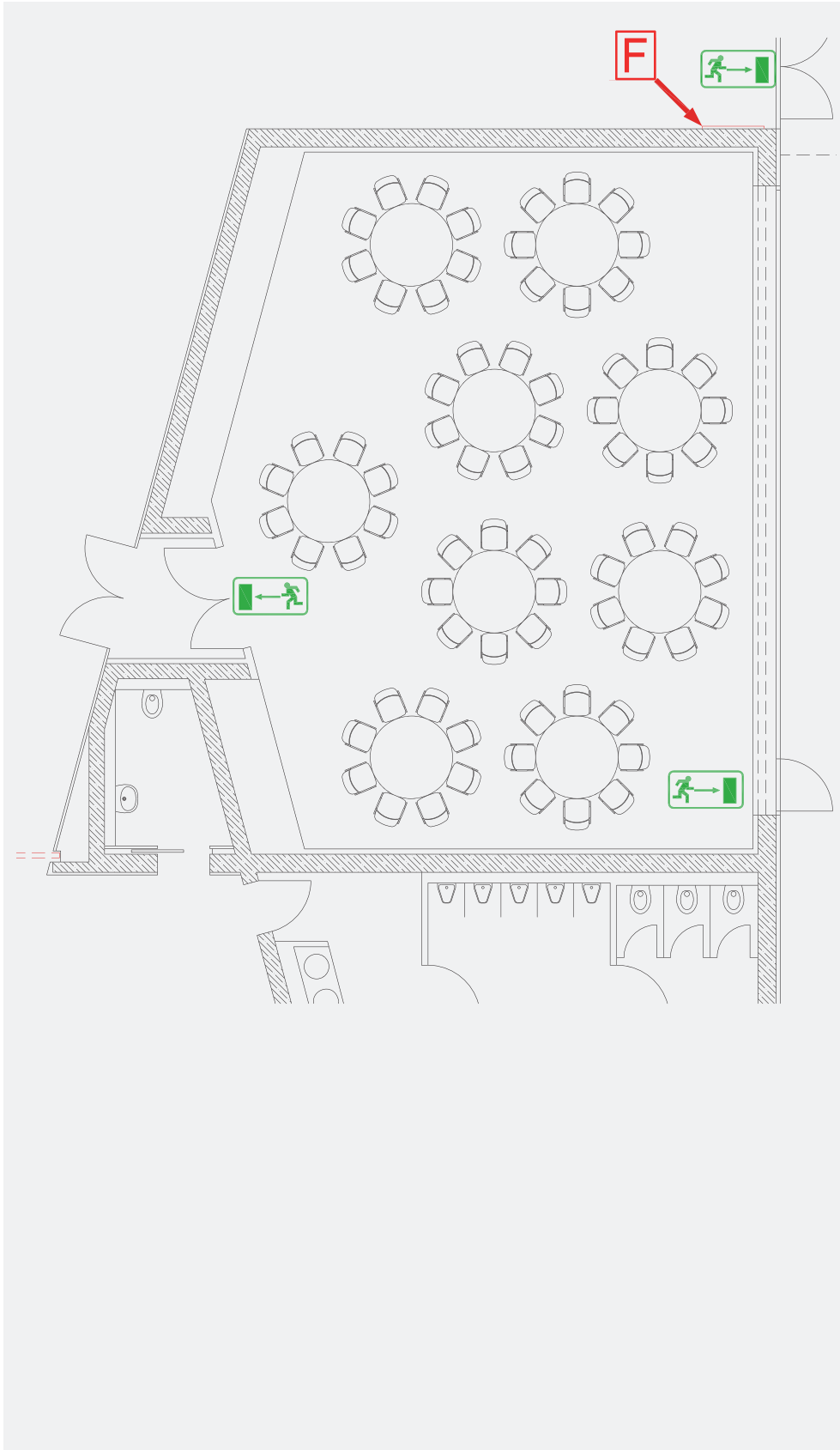
Ground floor

Extinguisher 
Escape route 

Last update: October 11, 2019
Disclosure to third parties only permitted with written authorization.
All specifications must be independently verified on location.

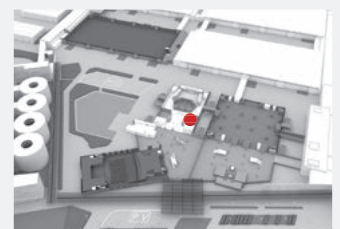
ICM – International Congress Center Messe München

ROOM 3: BANQUET SEATING





Area in m²
135

Banquet
72



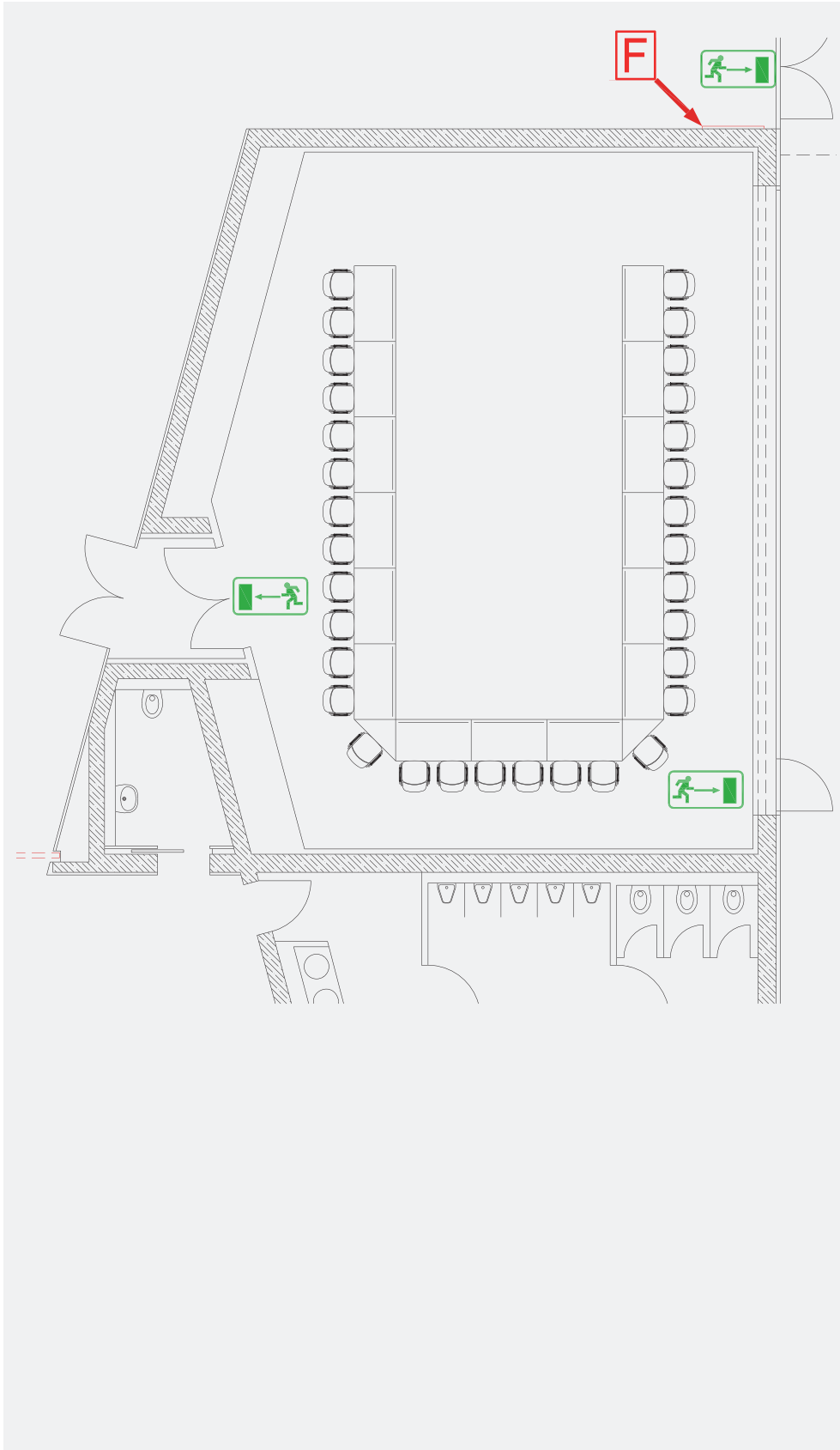
Ground floor

Extinguisher 
Escape route 

Last update: October 11, 2019
Disclosure to third parties only permitted with written authorization.
All specifications must be independently verified on location.

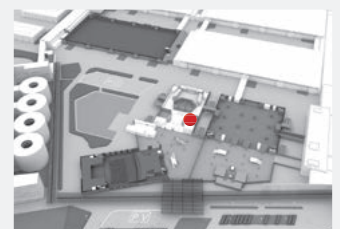
ICM – International Congress Center Messe München

ROOM 3: U-SHAPED SEATING





Area in m²
135

U-shaped
32



Ground floor

Extinguisher 
Escape route 

Last update: October 11, 2019
Disclosure to third parties only
permitted with written authorization.
All specifications must be
independently verified on location.